



Cholmondeley Road, Salford

Salford



Cholmondeley Road

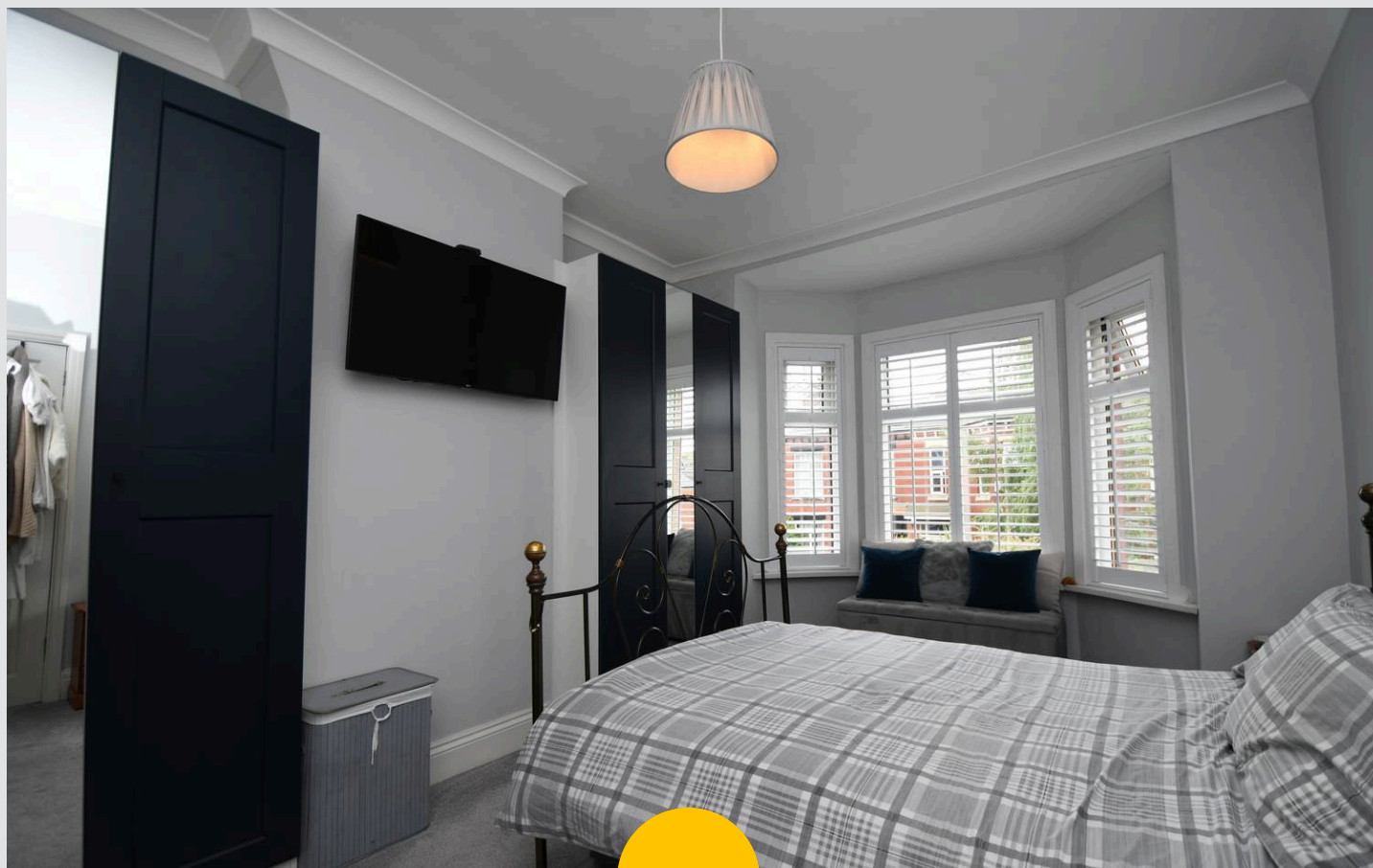
Salford

****Beautifully Presented, Three Bedroom Period Property Located on a Popular Road, Within Walking Distance of Salford Royal Hospital! Boasting a stunning fitted kitchen and three double bedrooms!****

Council Tax band: B

Tenure: Leasehold

- Beautifully Presented Three Bedroom Period Property
- Located on a Popular Road, Within Walking Distance of Salford Royal Hospital
- Large Bay-Fronted Lounge Diner
- Stunning kitchen, with ample storage and worktop space
- Three double bedrooms
- Contemporary three-piece bathroom suite
- Beautifully maintained gardens to the front and rear and off-road parking to the rear
- Within Walking Distance of Light Oaks Primary School and Several Well-Kept Parks
- Close to Excellent Transport Links into Salford Quays, Media City and Manchester City Centre
- Perfect first time buy or family home!



HILLS



Hallway

16' 0" x 6' 7" (4.88m x 2.00m)

Lounge Diner

29' 6" x 12' 7" (8.99m x 3.84m)

Kitchen

17' 2" x 8' 1" (5.24m x 2.46m)

Bedroom 1

11' 10" x 15' 7" (3.60m x 4.75m)

Bedroom 2

9' 1" x 6' 9" (2.76m x 2.05m)

Bedroom 3

12' 9" x 12' 6" (3.89m x 3.80m)

Bathroom

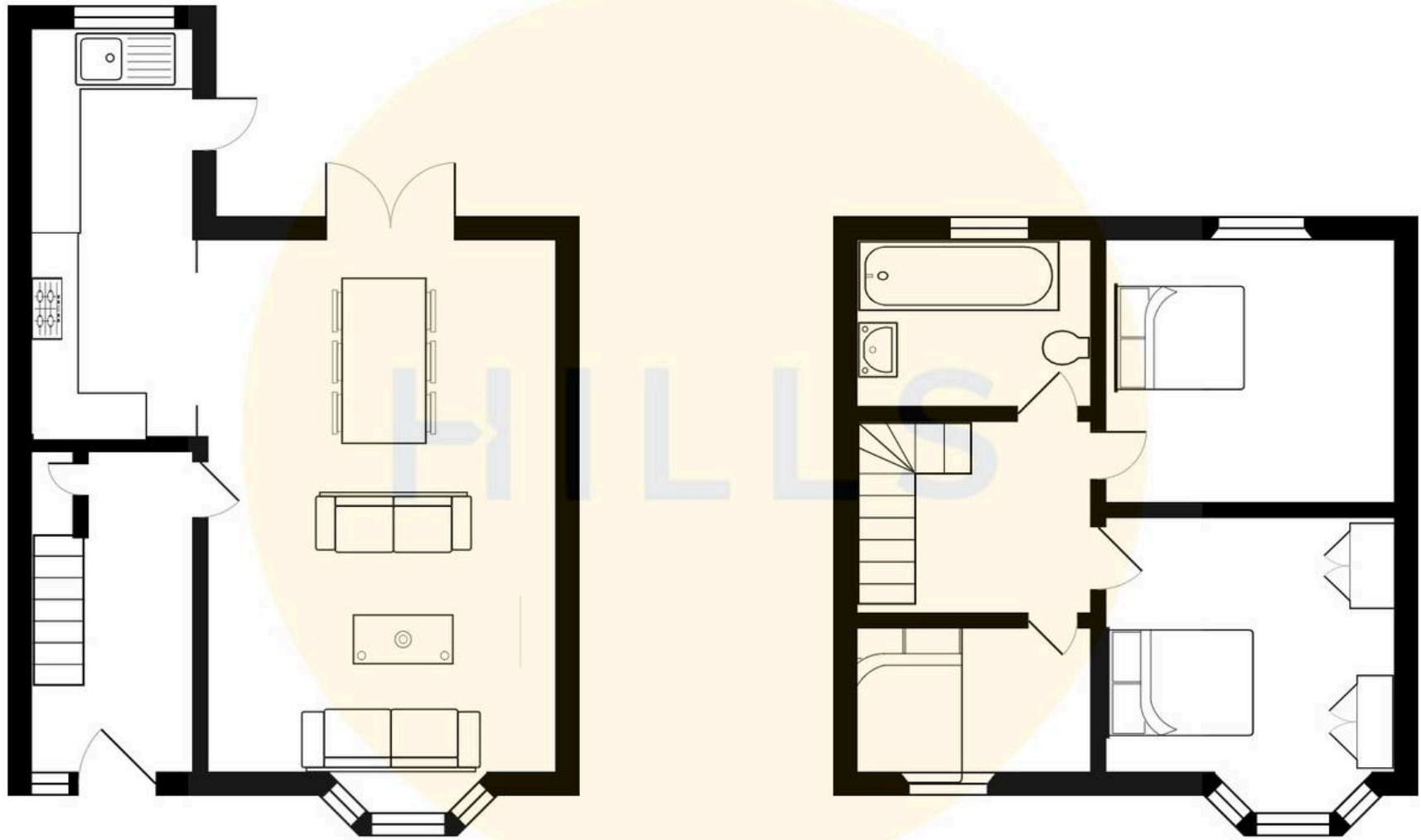
8' 10" x 5' 7" (2.70m x 1.70m)





HILLS







Hills | Salfords Estate Agent

Hills Residential, Sentinel House Albert Street – M30 0SS

0161 707 4900

sales@hills.agency

www.hills.agency/



By law, we are required to conduct anti-money laundering checks on all potential buyers and sellers. In line with HMRC guidelines, our trusted partner, Coadjute, will securely manage these checks on our behalf. A non-refundable fee of £45 + VAT per person will apply, and Coadjute will handle the payment. Once an offer is accepted, Coadjute will send a secure link for you to complete the biometric checks. These checks must be completed before we can send the memorandum of sale to all parties. PLEASE NOTE: The Agent has not tested any equipment, fixtures, fittings or services so cannot verify that they are in working order or fit for the purpose. References to the properties tenure are based on information supplied by the seller. You are advised to check the availability of this property before travelling any distance to view. Every effort has been made to ensure these particulars are correct and not misleading but their accuracy is not guaranteed nor do they form part of any contract.