



THORNTON GARDENS, SW12

£449,000

- Four bedrooms
- Private balcony
- Close to Tooting Bec Common
- Separate kitchen & living room
- No onward chain
- Energy rating: C

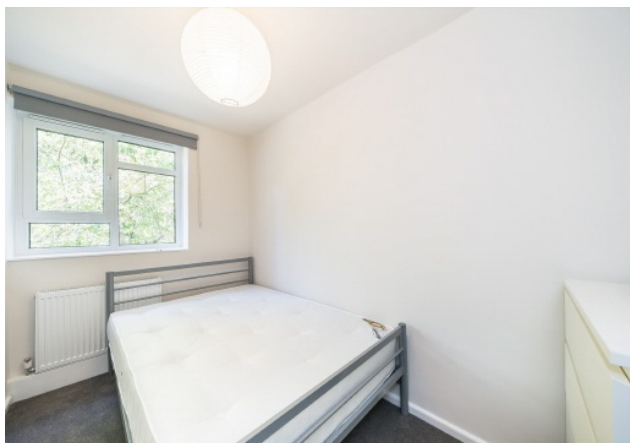




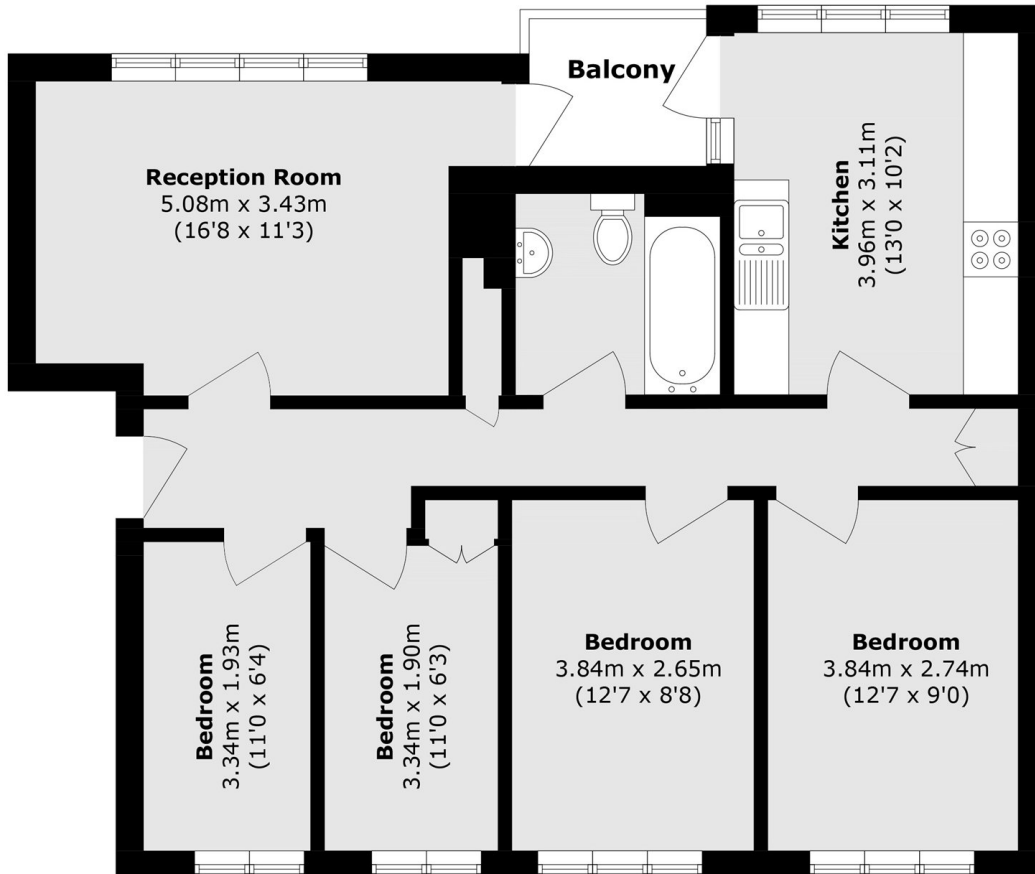
ABOUT THE HOME

A well presented four bedroom flat located close proximity to Tooting Bec Common. This property also comes with a private balcony and is being sold with no onward chain.

Thornton Gardens is a quiet cul de sac location that sits just East of the Hyde Farm area and is well located for easy access into Balham where there is a host of amenities on offer including an array of shops, bars and restaurants. Balham mainline and underground stations offer excellent transport links into the city.







Total area (approx.): 82.7 sq. m (890.1 sq. ft)
Total area (approx.): 3.5 sq. m (37.6 sq. ft)

JACKSONS BALHAM

8-11 Balham Station Road,
London, SW12 9SG
Sales: 020 8675 6555
Lettings: 020 8675 6565

Energy Rating: We aim to make our particulars both accurate and reliable. However they are not guaranteed; nor do they form part of an offer or contract. If you require clarification on any points then please contact us, especially if you're traveling some distance to view. Please note that appliances and heating systems have not been tested and therefore no warranties can be given as to their good working order.