



## Burbage Close, SE1

£300,000

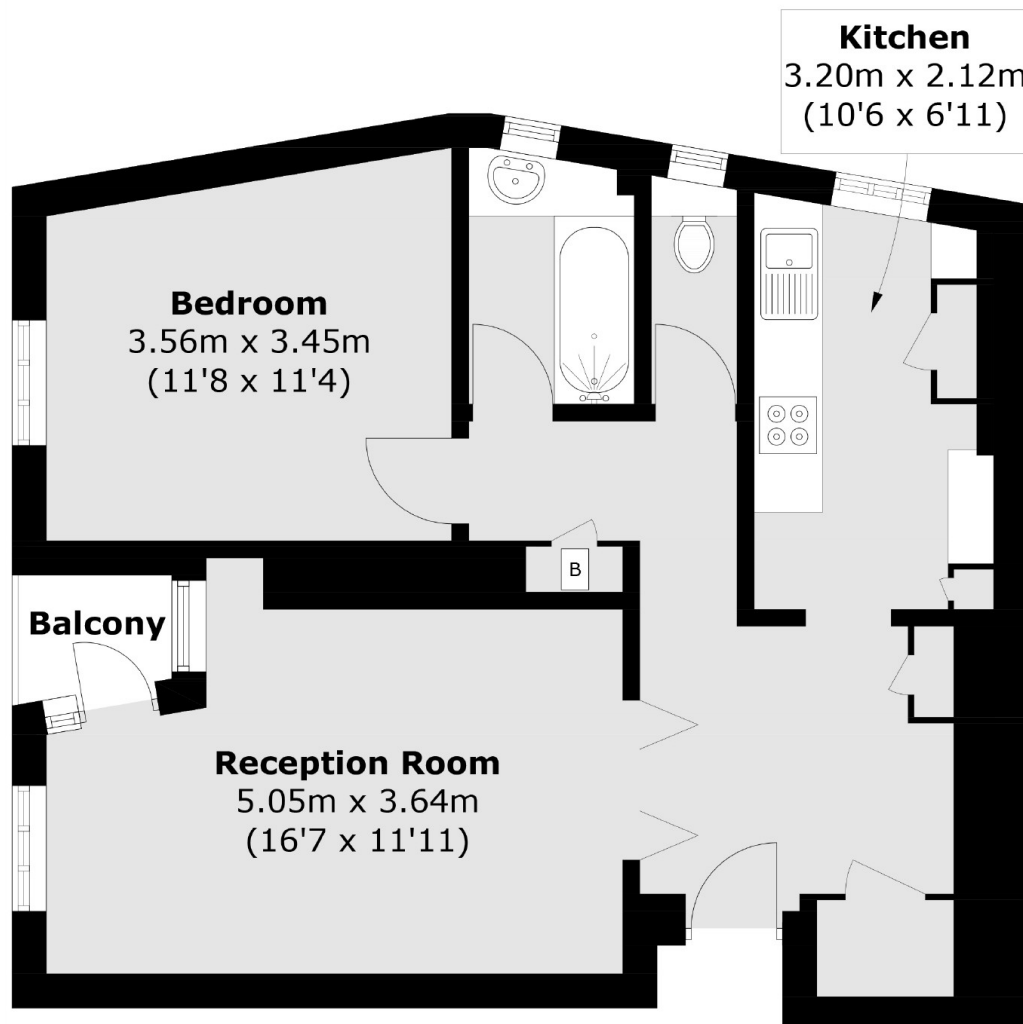
A highly attractive one-bedroom flat featuring a separate kitchen and living room, a private balcony and ample storage throughout. Offered chain free, the property presents an excellent opportunity for first-time buyers, investors or those seeking a well-connected London home. Offers in excess of £300,000.

Burbage Close is enviably located moments from London Bridge station and Borough station, placing the very best of SE1 on the doorstep. Residents can enjoy the renowned food stalls, artisan cafés and lively atmosphere of Borough Market, riverside walks and cultural landmarks along the South Bank, and the independent restaurants, boutiques and wine bars that give Bermondsey Street its distinctive village-like character.

### Features

Offers in excess of £300,000  
Chain Free Sale  
One Double Bedroom  
Separate Kitchen  
Large Living Room  
Private Balcony

Burbage Close,  
London, SE1



Total area (approx.): 53.6 sq. m (576.9 sq. ft)  
Balcony area (approx.): 1.4 sq. m (15.1 sq. ft)