



Greenfields



Jubilee Drive

South Ruislip

Guide Price £625,000

Jubilee Drive

South Ruislip HA4

Well presented four-bedroom semi-detached home with spacious layout, modern kitchen, ensuite, family bathroom, off-street parking, and great location near schools and transport. No upper chain.

Council Tax band: E

Tenure: Freehold

EPC Energy Efficiency Rating: D

EPC Environmental Impact Rating:

- Semi-Detached
- Four Bedrooms
- Two Bathrooms
- Modern Kitchen
- Through Lounge
- Paved Front Drive
- Garden
- NO UPPER CHAIN



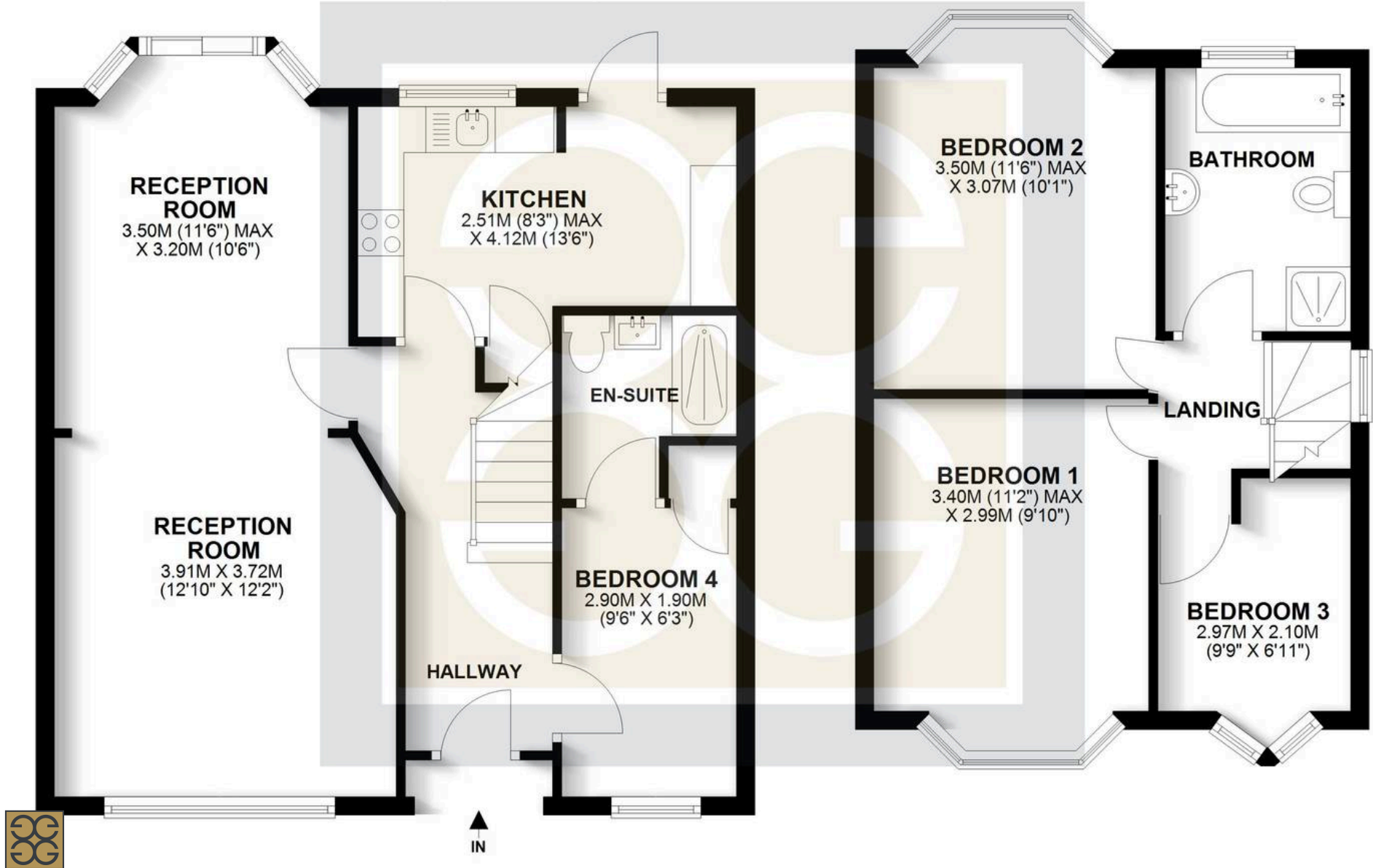
Greenfields

GROUND FLOOR

APPROX. 56.1 SQ. METRES (603.6 SQ. FEET)

FIRST FLOOR

APPROX. 37.0 SQ. METRES (398.3 SQ. FEET)



Greenfields

TOTAL AREA: APPROX. 93.1 SQ. METRES (1001.8 SQ. FEET)



Greenfields

115 Victoria Road, Ruislip - HA4 9BN

01895 628560 • info@greenfieldsproperty.co.uk • www.greenfieldsproperty.co.uk

These particulars, whilst believed to be accurate are set out as a general outline only for guidance and do not constitute any part of an offer or contract. Intending purchasers should not rely on them as statements of representation of fact, but must satisfy themselves by inspection or otherwise as to their accuracy.