



www.chrystals.co.im

1 Mill Cottages, Kentraugh, Colby, IM9 4AT
Asking Price £299,000

1 Mill Cottages, Kentraugh, Colby, IM9 4AT

Asking Price £299,000

A charming end of terrace cottage in a delightful semi-rural location just minutes from the coast, with far-reaching views over the countryside. Within walking distance of the popular Shore Hotel and the sweeping beach of Bay Ny Carrickey, convenient for bus route. Accommodation on the ground floor comprises a cosy lounge with feature fireplace, a separate dining room and kitchen, whilst upstairs there are 3 bedrooms and a shower room. Outside is a large garden with a lawned area, mature shrubs, trees, a stone outbuilding and shed. Parking space. No onward chain.



LOCATION

Travelling out of Port Erin continue straight over at the Four Roads roundabout into Castletown Road and left at the junction onto the A5 coast road. Take the first turning on the left immediately after the Shore Hotel and proceed around the bend, where 1 Mill Cottages can be found on the right hand side.

ENTRANCE HALL

Wood-effect laminate flooring. Staircase to first floor.

LOUNGE

13' 7" x 10' 6" (4.15m x 3.2m)

Cosy room. Ornate fireplace with wooden surround. Oak laminate flooring. Front aspect with lovely countryside views. Understairs storage. 2 steps down to:

DINING ROOM

13' 10" x 6' 10" (4.21m x 2.08m)

Rear aspect. Oak laminate flooring. Opening to:

KITCHEN

12' 4" x 9' 9" (3.75m x 2.97m)

Fitted kitchen with a range of wall and base units with contrasting worktops, incorporating white sink unit, range-style cooker, tiled splashbacks, oak laminate flooring. Door leading to side and rear garden.

FIRST FLOOR

LANDING

Loft access.

BEDROOM 1

13' 9" x 12' 2" (4.18m x 3.71m)

A generous room with lovely countryside views. Front aspect.

BEDROOM 2

11' 5" x 10' 9" (3.49m x 3.27m)

Dual aspect window offering pleasant garden views. High sloped ceiling.

BEDROOM 3

10' 2" x 8' 0" (3.10m x 2.44m)

Rear aspect with views over garden. Cupboard housing Worcester gas central heating boiler.

SHOWER ROOM

Suite comprising double shower, w.c. and pedestal wash hand basin. Tiled walls and flooring. Extractor fan.

OUTSIDE

Large rear and side gardens, mainly laid to lawn with mature trees and shrubs. Open views to countryside beyond. Manx stone outbuilding, shed. Parking space.

SERVICES

Mains water, drainage and electricity. UPVC double glazing. Gas central heating.

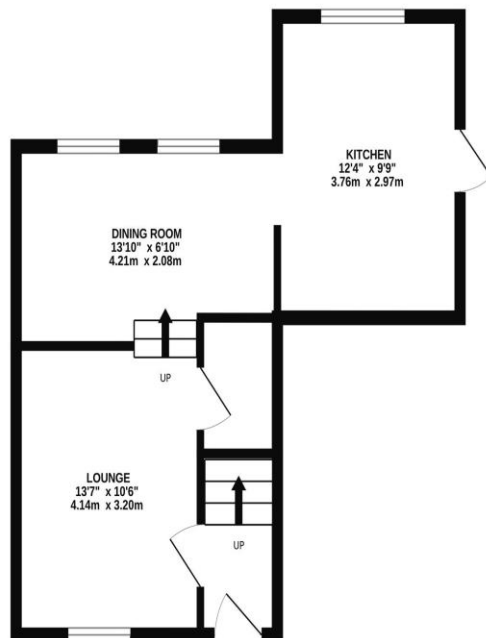
POSSESSION

Freehold. Vacant possession on completion. No onward chain. The company do not hold themselves responsible for any expenses which may be incurred in visiting the same should it prove unsuitable or have been let, sold or withdrawn. **DISCLAIMER** - Notice is hereby given that these particulars, although believed to be correct do not form part of an offer or a contract. Neither the Vendor nor Chrystals, nor any person in their employment, makes or has the authority to make any representation or warranty in relation to the property. The Agents whilst endeavouring to ensure complete accuracy, cannot accept liability for any error or errors in the particulars stated, and a prospective purchaser should rely upon his or her own enquiries and inspection. All Statements contained in these particulars as to this property are made without responsibility on the part of Chrystals or the vendors or lessors.

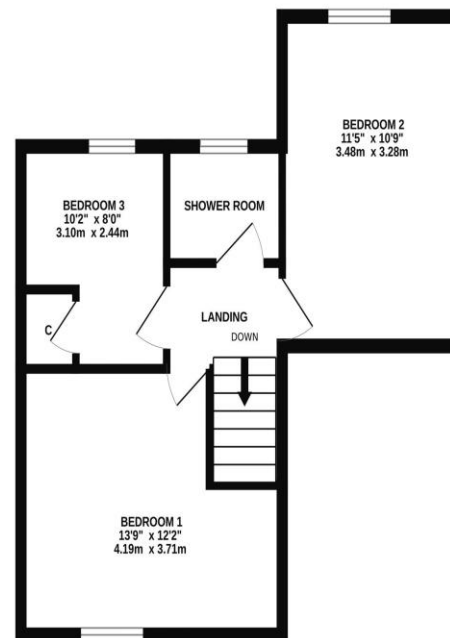




GROUND FLOOR
387 sq.ft. (36.0 sq.m.) approx.



1ST FLOOR
398 sq.ft. (37.0 sq.m.) approx.



TOTAL FLOOR AREA : 785 sq.ft. (72.9 sq.m.) approx.

Whilst every attempt has been made to ensure the accuracy of the floorplan contained here, measurements of doors, windows, rooms and any other items are approximate and no responsibility is taken for any error, omission or mis-statement. This plan is for illustrative purposes only and should be used as such by any prospective purchaser. The services, systems and appliances shown have not been tested and no guarantee as to their operability or efficiency can be given.
Made with Metropix ©2025

Since 1854



DOUGLAS

31 Victoria Street
Douglas IM1 2SE
T. 01624 623778
E. douglas@chrystals.co.im

PORT ERIN

23 Station Road
Port Erin IM9 6RA
T. 01624 833903
E. porterin@chrystals.co.im

COMMERCIAL

Douglas Office: 01624 625100, commercial@chrystals.co.im

RENTALS

Douglas Office: 01624 625300, douglasrentals@chrystals.co.im

Directors: Neil Taggart BSc (Hons), M.R.I.C.S.; Joney Kerruish BSc (Hons), M.R.I.C.S.; Dafydd Lewis BSc (Hons), M.R.I.C.S., MA (Cantab), Dip Surv Prac.
Registered in the Isle of Man No. 34808, Chrystal Bros, Stott & Kerruish Ltd. Trading as Chrystals. Registered Office, 31 Victoria Street, Douglas, Isle of Man IM1 2SE.