



12 Elm Road, Evesham

Guide Price **£300,000**

**SHELDON
BOSLEY
KNIGHT**

LAND AND
PROPERTY
PROFESSIONALS



12 Elm Road

Evesham, Evesham

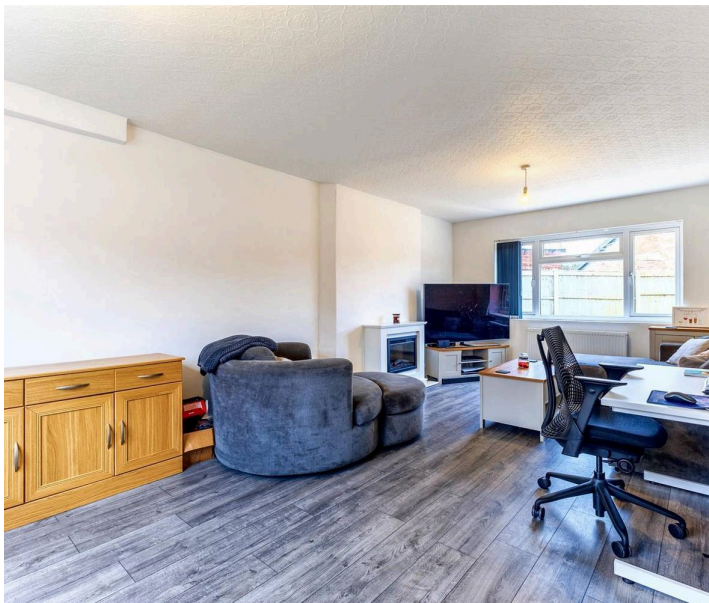
Council Tax band: D

Tenure: Freehold

EPC Energy Efficiency Rating: D

EPC Environmental Impact Rating: E

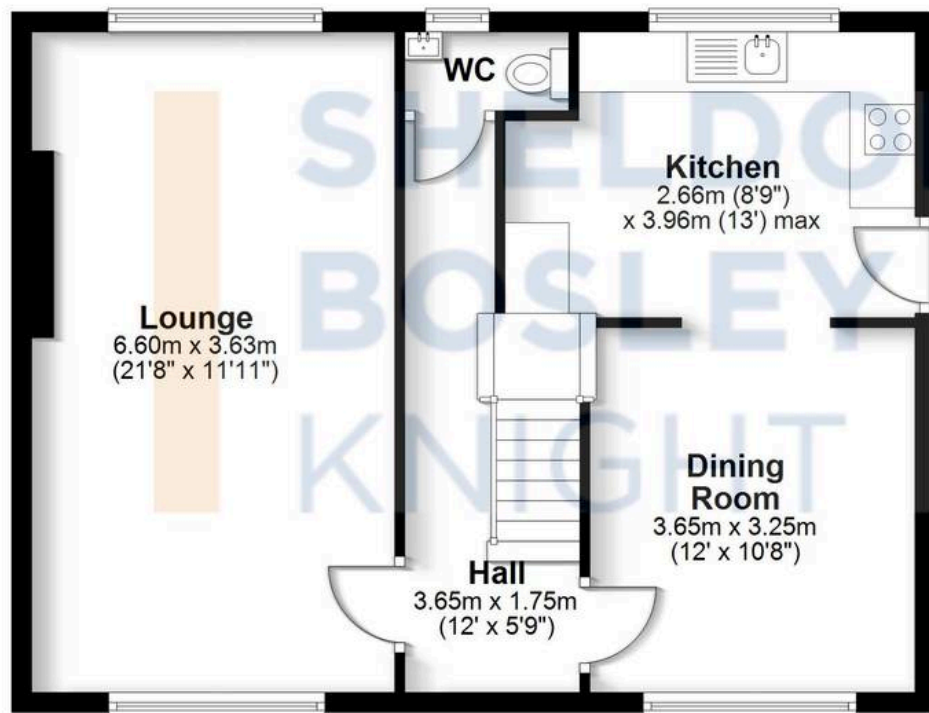
- NO ONWARD CHAIN
- THREE DOUBLE BEDROOMS
- SET IN POPULAR BENGOWORTH AREA OF EVESHAM
- DUAL-ASPECT SITTING ROOM
- SPACIOUS DINING ROOM
- NEWLY FITTED KITCHEN & FAMILY BATHROOM
- LAWNED SIDE GARDEN
- LANDSCAPED REAR GARDEN WITH NEW FENCING
- OFF ROAD PARKING TO THE FRONT





Ground Floor

Approx. 58.3 sq. metres (627.3 sq. feet)



First Floor

Approx. 44.3 sq. metres (477.0 sq. feet)



Total area: approx. 102.6 sq. metres (1104.3 sq. feet)

All efforts have been made to ensure the measurements are accurate, however these are for guidance purposes only.
Plan produced using PlanUp.