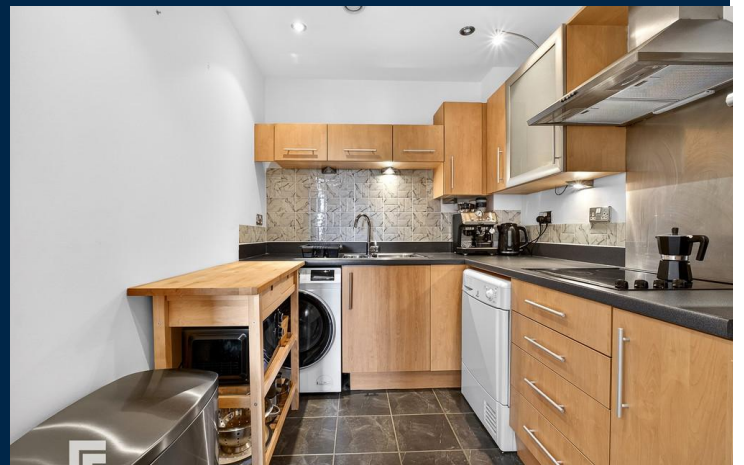
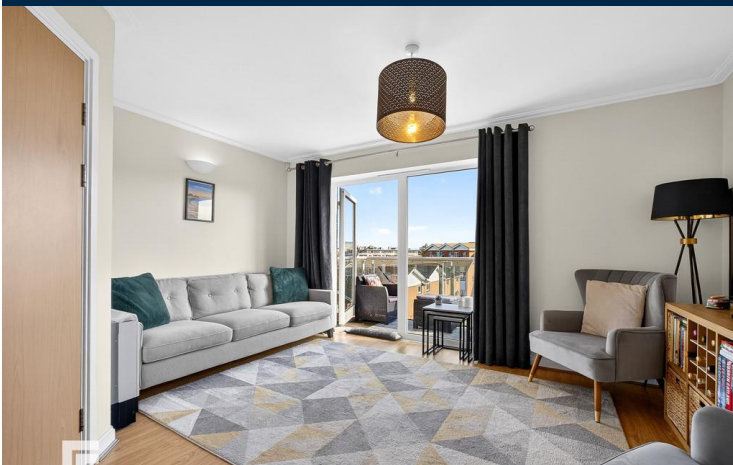




**LISBON HOUSE**  
**TALIESIN COURT**  
**CARDIFF CF10 5NH**

ASKING PRICE OF  
**£209,950**



**TOP FLOOR APARTMENT**



**2**



**1**



**2**



**1**

**\*\*IDEAL FIRST TIME PURCHASE\*\*** MGY are pleased to present for sale, a spacious two-bedroom, Top floor apartment within the highly sought after gated development, Century Wharf. Walking distance to Cardiff Bay and the City Centre. The accommodation comprises of large entrance hall to living/dining room, separate fitted kitchen, bathroom and two double bedrooms, one with en suite. The modern property further benefits from a large, decked balcony, double glazing throughout, security video entry system, bike storage, an allocated undercroft parking space and visitor parking. The development also benefits from 24-hour concierge and leisure facilities with fully equipped swimming pool, gymnasium, sauna and spa. EWS1 form in place. Ideal first-time purchase. Viewing highly recommended.

#### ENTRANCE HALL

Entered via wooden door, with security spy hole. Large spacious hall. Laminate wood effect flooring. Wall mounted video entry intercom system. Storage cupboard, housing hot water tank. Thermostat. Spotlights.

#### LOUNGE/DINER

24' 3" x 16' 5" (7.40m x 5.01m)

Large double glazed uPVC window and patio door, leading to decked balcony. Ample natural daylight. Laminate wood effect flooring. T.V Aerial point. Telephone point. Wall mounted electric radiators. Door leading to:-

#### KITCHEN

10' 10" x 8' 10" (3.32m x 2.71m)

Modern fitted separate kitchen. Wall, base and drawer units, with work surfaces incorporating stainless steel sink, with mixer tap. Ample storage with under unit lighting. Tiled flooring. Integrated oven and four ring electric hob, with extractor hood over. Space for dishwasher, fridge freezer and washing machine. Extractor fan. Spotlights

#### MASTER BEDROOM

17' 9" x 15' 8" (5.43m x 4.78m)

Double glazed uPVC windows to front. Carpeted flooring. Built in double wardrobe. T.V Aerial point. Telephone point. Wall mounted electric radiators. Door leading to en-suite.

**TENURE: LEASEHOLD**

**COUNCIL TAX BAND: F**

**FLOOR AREA APPROX: 753 SQ FT**

**VIEWING: STRICTLY BY APPOINTMENT**

#### EN SUITE

7' 0" x 6' 11" (2.14m x 2.12m)

Tiled flooring. Fully tiled walls. Wall mounted wash hand basin, with mixer tap. W.C. Double shower cubide. Wall mounted mirrored vanity unit. Heated towel rail. Shaver point. Extractor fan. Spotlights.

#### BEDROOM TWO

15' 3" x 11' 4" (4.67m x 3.47m)

Double glazed uPVC windows to front. Double bedroom. Carpeted flooring. Wall mounted electric radiators. Built in double wardrobe. T.V Aerial point.

#### BATHROOM

6' 11" x 6' 10" (2.12m x 2.10m)

Tiled flooring. Fully tiled walls. Wall mounted wash hand basin, with mixer tap. W.C. Panelled bath, with shower over. Glass shower screen. Wall mounted mirrored vanity unit. Heated towel rail. Shaver point. Extractor fan. Spotlights.

#### BALCONY

Large decked balcony. External lighting. Accessed from the living room.

#### PARKING

Gated access to an allocated undercroft parking space. Visitor parking.

#### FACILITIES

The gated development benefits from 24 hour concierge and leisure facilities, with fully equipped swimming pool, gymnasium, sauna and spa

#### TENURE

MGY are advised that the property is leasehold, with a term of 999 years from 2001. Service charges of £\_\_\_ per annum, which includes water rates, building insurance, reserve fund contribution, onsite concierge and leisure facilities, annual boiler servicing, lift maintenance, maintenance of internal and external communal areas, regular cleaning and refuse disposal, bike storage, an allocated undercroft parking space, visitor parking and parking management. Ground rent £\_\_\_ per annum.

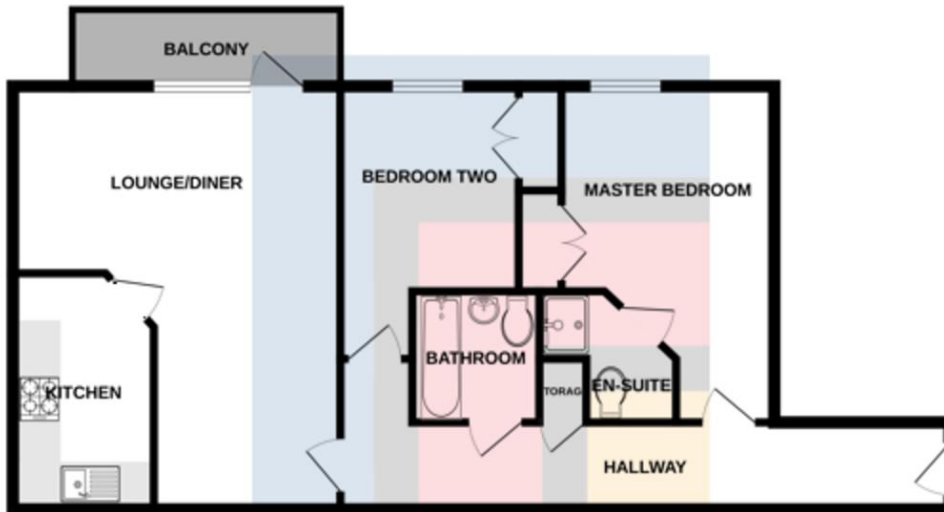


# LISBON HOUSE, TALIESIN COURT , CARDIFF CF10 5NH



# LISBON HOUSE, TALIESIN COURT , CARDIFF CF10 5NH

## TOP FLOOR



Whilst every attempt has been made to ensure the accuracy of the floorplan contained here, measurements of doors, windows, rooms and any other items are approximate and no responsibility is taken for any error, omission or mis-statement. This plan is for illustrative purposes only and should be used as such by any prospective purchaser. The services, systems and appliances shown have not been tested and no guarantee as to their operability or efficiency can be given.  
Made with letroplan ©2024

**CARDIFF** 029 2046 5466

13 Mount Stuart Square, Cardiff Bay, Cardiff,  
South Glamorgan, CF10 5EE



**Important Notice:** These particulars are prepared for guidance only and do not form whole or any part of any offer or contract. Whilst the particulars are given in good faith, they are not to be relied upon as being a statement or representation of fact. They are made without responsibility on the part of MGY Ltd or Vendor/lessor and the prospective purchaser/lessee should satisfy themselves by inspection or otherwise as to their accuracy. Neither MGY Ltd nor anyone in their employ, or the vendor/lessor, imply, make or give any representation/warranty whatsoever in relation to this property.

The services of our recommended mortgage brokers and solicitors may be beneficial. While a referral fee may be received if they are chosen, there is no obligation to use their services, and an alternative mortgage provider/solicitor can be chosen.

**MGY.CO.UK**