



OVER 60?

Secure this property
for up to **59% less!**

Guide Price

£350,000

Freehold

4x  2x  2x 

**Barnes Way, Herne Bay,
Kent, CT6**

Wards
Helping you move forwards



Main features

- Impressive space and design
- Beautiful presentation throughout
- Car port and allocated parking
- On the fringe of popular development
- Principle bedroom with en-suite and additional family bathroom

Accommodation

GROUND FLOOR

Entrance Hallway

Cloakroom

Lounge: 19'8 x 14'10 (6.00m x 4.52m)

Kitchen/Diner: 17'7 x 17'3 (5.36m x 5.26m)

Snug: 13'11 x 12'8 (4.24m x 3.86m)

FIRST FLOOR

Landing

Bedroom 1: 16'5 x 14'2 (5.01m x 4.32m)

En-Suite Shower Room

Bedroom 2: 14'10 x 9'0 (4.52m x 2.75m)

Bedroom 3: 13'5 x 11'7 (4.09m x 3.53m)

Bedroom 4: 11'7 x 9'9 (3.53m x 2.97m)

Bathroom

OUTSIDE

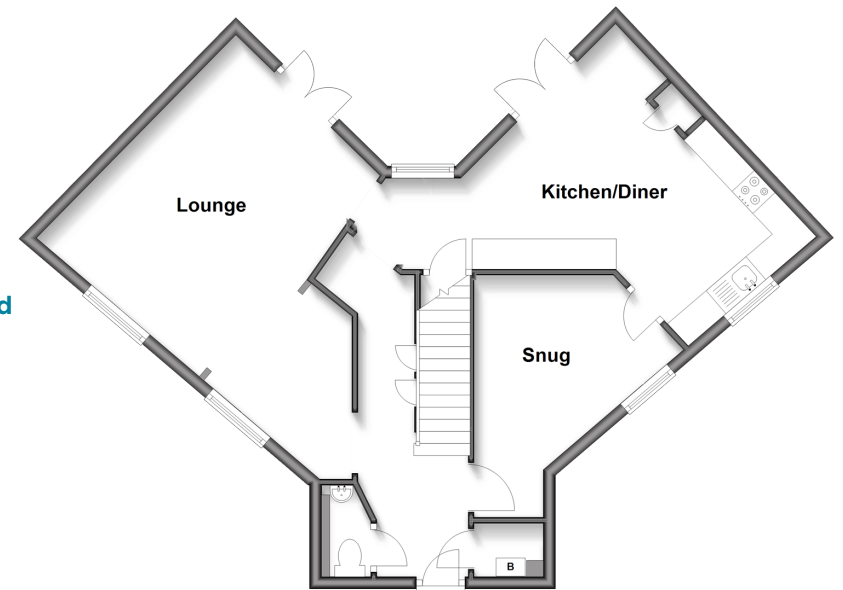
Car Port

Allocated Parking

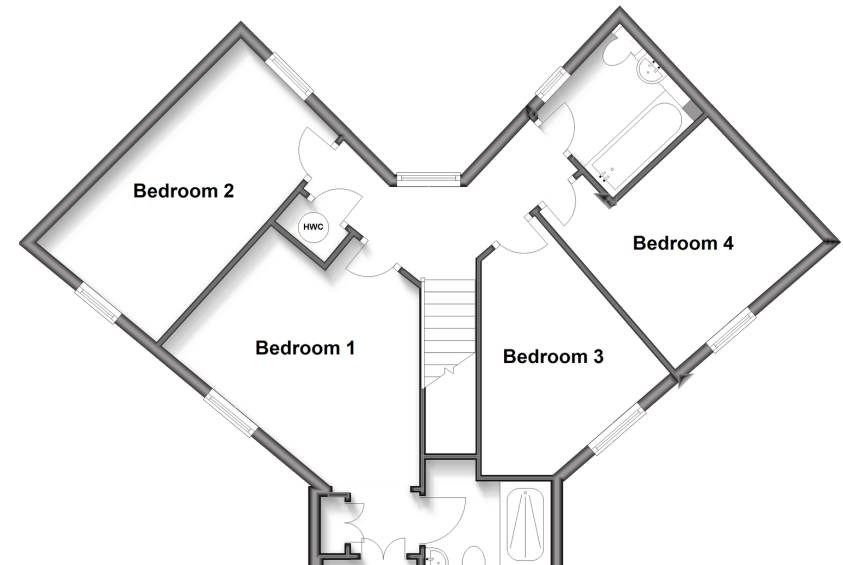
Front Garden

Rear Garden

Ground Floor
Approx. 62.0 sq. metres (667.4 sq. feet)



First Floor
Approx. 63.0 sq. metres (677.8 sq. feet)



Call Herne Bay - 01227 361226 ■ wardsof Kent.co.uk

- Legal advice should be taken to verify fixtures/fittings, planning, alterations and/or lease details
- Appliances & services are untested, dimensions are approximate and floor plans are not to scale
- Through a Homewise Home For Life Plan people aged 60+ can secure this property for up to 50% less, by purchasing a Lifetime Lease.



11238749/20250925/EM/GG