



Connells

Biddlesden Road
Yeovil



Property Description

This well-presented home offers generous living space across multiple reception rooms, including a bright lounge with garden views, a separate dining room, and a versatile downstairs office. The kitchen/diner provides a sociable hub of the house, complemented by a practical utility room with lean-to access to the garden. Upstairs, four double bedrooms—two with their own ensembles—provide comfortable family accommodation, along with a modern bathroom featuring a Jacuzzi bath. The property also includes a double garage with power, lighting, storage, and EV charging, along with two parking spaces to the front.

Entrance Hall

A welcoming entrance hall featuring a front door leading into the property, a useful coat cupboard, a radiator, and a double-glazed window to the front allowing natural light into the space.

Lounge

A bright lounge featuring a double-glazed window to the front, double-glazed patio doors opening onto the garden, two radiators, and a wood burner adding warmth and character to the space.

Dining Room

A well-proportioned dining room with double-glazed patio doors opening onto the garden and a radiator providing warmth to the space.

Office

A versatile room featuring a double-glazed window to the front, a radiator, and a separate phone line, making it ideal for use as a home office or an additional reception space.

Kitchen

A spacious kitchen/dining area featuring a double-glazed window overlooking the rear garden and a practical breakfast bar. The kitchen is fitted with a range of wall and base units with worktops over, a one and a half bowl sink and drainer, an eye-level electric double oven, built-in microwave, 5-ring gas hob, cooker hood, and an instant boiled-water tap. Additional features include spotlights, space for a dishwasher and a tall freestanding fridge freezer, and an archway leading through to the utility room.

Utility Room

A practical utility room offering space for a washing machine and tumble dryer, along with additional cupboards for storage. The room includes a sink, extractor fan, radiator, and a door providing access to the garden. A useful lean-to area adjoins the utility space, offering sheltered access to the garden and additional room for storage or practical use.

Cloakroom

A convenient cloakroom fitted with a WC, wash hand basin, and a double-glazed window to the front.

Landing

Landing area with an airing cupboard housing the hot water tank, and loft access which is partially boarded for storage.

Bedroom One

A spacious main bedroom featuring a double-glazed window to the front, two sets of fitted double wardrobes for generous storage, and a radiator.

En-Suite

A well-appointed ensuite featuring a double-glazed window to the front, wash hand basin, WC, rainfall shower, extractor fan, spotlights, a radiator, and a useful storage cupboard.

Bedroom Two

A well-proportioned bedroom featuring a double-glazed window to the rear, a radiator and a door providing access to the ensuite.

En-Suite

Bedroom Two's ensuite is fitted with a shower cubicle, wash hand basin, WC, and an extractor fan.

Bedroom Three

A well-proportioned bedroom featuring a double-glazed window to the front, a radiator, and a built-in storage cupboard.

Bedroom Four

A bright bedroom featuring a double-glazed window to the rear and a radiator.

Bathroom

A well-appointed bathroom featuring an all-in-one vanity unit incorporating the wash hand basin and WC, a heated towel rail, and tiling to splashback areas. The room includes a double-glazed window to the rear, a built-in American-style stick TV, and a jacuzzi bath with mixer taps and shower over.

Outside

Front Garden

The front garden features a footpath leading to the property, bordered by a gate and mature hedges. The area includes a lawned section, creating a neat and welcoming approach to the home.

Rear Garden

The rear garden offers a versatile outdoor space featuring a patio area and a lawned section, with fencing and brickwork enclosing the boundaries for privacy. A gate provides access to the rear, and has decked ramp access, with a further ramp descending into the main garden, complemented by glass railings. The garden also includes a door giving direct access to the garage.

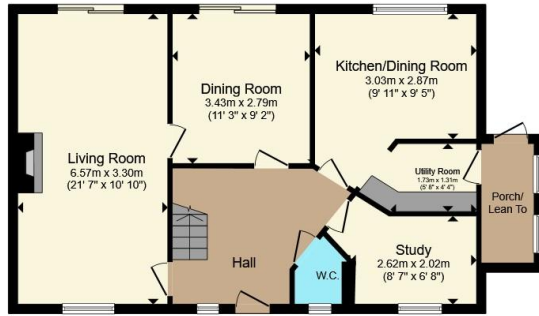
Garage / Parking

The property benefits from a spacious double garage equipped with power and lighting, along with an electric roller door for ease of access. Part of the garage has been half-boarded and insulated, creating a practical area for additional storage. An updated weather-proof electric supply, safe for 3 pin EV car charging, offering convenient home charging for electric vehicles. In addition to the garage itself, there are two dedicated parking spaces positioned directly in front, providing ample off-road parking for residents or visitors.

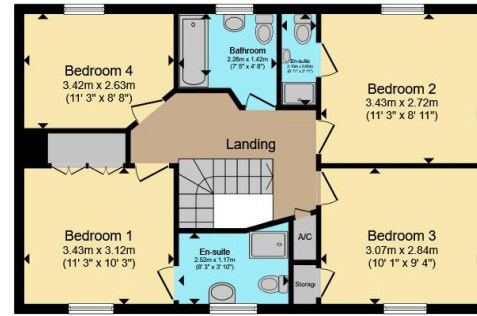




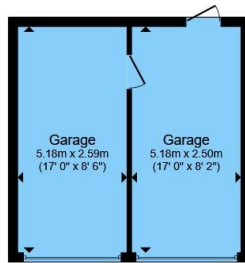




Ground Floor



First Floor



Garage

Total floor area 169.3 m² (1,822 sq.ft.) approx

This floor plan is for illustrative purposes only. It is not drawn to scale. Any measurements, floor areas (including any total floor area), openings and orientation are approximate. No details are guaranteed, they cannot be relied upon for any purpose and they do not form part of any agreement. No liability is taken for any error, omission or misstatement. A party must rely upon its own inspection(s). Powered by www.propertybox.io



To view this property please contact Connells on

T 01935 431 129
E yeovil@connells.co.uk

1-3 Princes Street
 YEOVIL BA20 1EW

EPC Rating: A Council Tax Band: E

Tenure: Freehold

view this property online connells.co.uk/Property/YOV313337



1. MONEY LAUNDERING REGULATIONS Intending purchasers will be asked to produce identification documentation at a later stage and we would ask for your co-operation in order that there will be no delay in agreeing the sale. 2. These particulars do not constitute part or all of an offer or contract. 3. The measurements indicated are supplied for guidance only and as such must be considered incorrect. Potential buyers are advised to recheck measurements before committing to any expense. 4. We have not tested any apparatus, equipment, fixtures, fittings or services and it is in the buyers interest to check the working condition of any appliances.

Connells Residential is registered in England and Wales under company number 1489613, Registered Office is Cumbria House, 16-20 Hockliffe Street, Leighton Buzzard, Bedfordshire, LU7 1GN. VAT Registration Number is 500 2481 05.

See all our properties at www.connells.co.uk | www.rightmove.co.uk | www.zoopla.co.uk

Property Ref: YOY313337 - 0007