

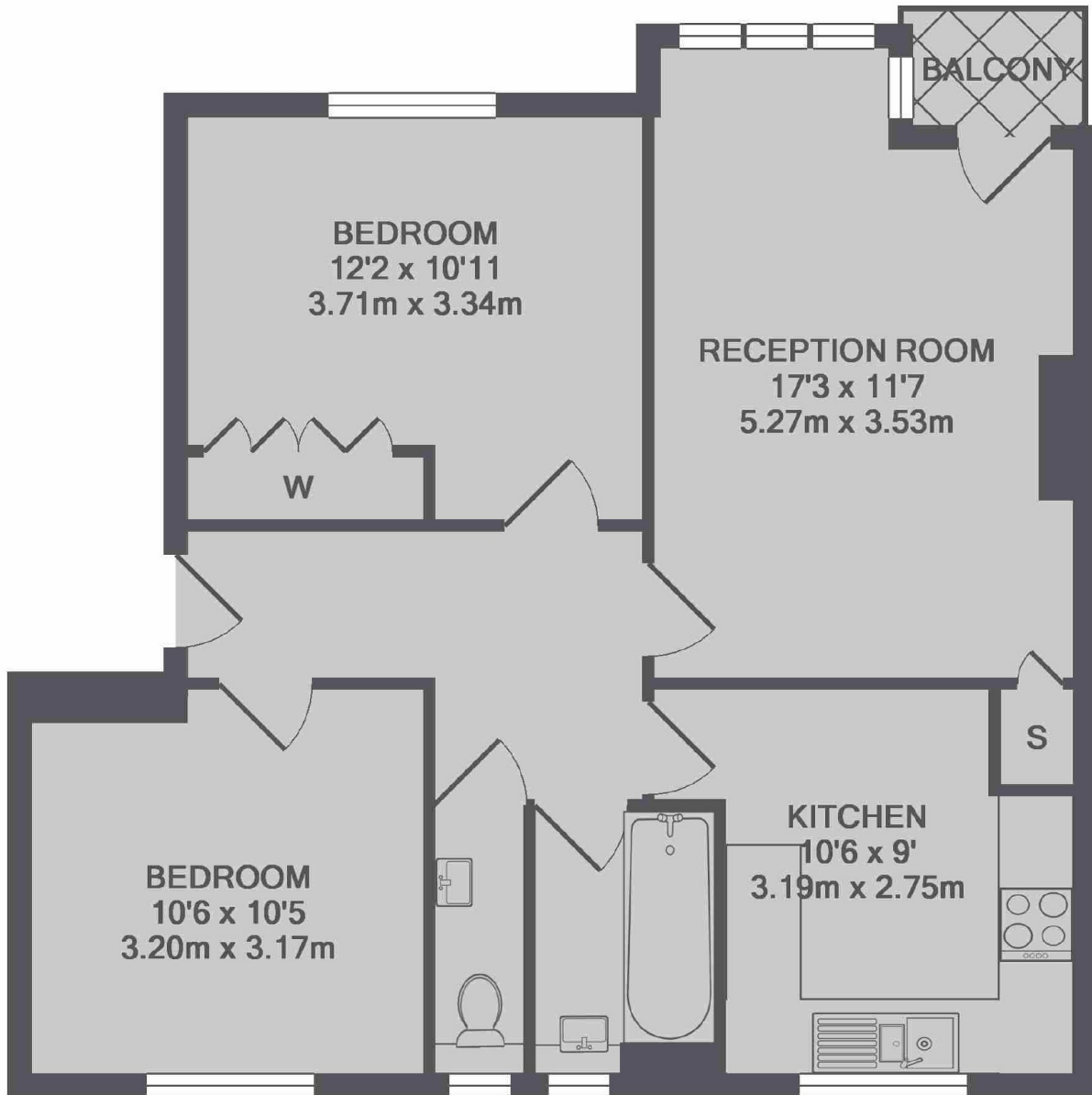


ST. JAMES'S CLOSE, SW17

£2,100 PCM

- Purpose built
- Reception room
- Modern fitted kitchen
- Two bedrooms
- Good decorative order
- Energy rating: C





TOTAL APPROX. FLOOR AREA 680 SQ.FT. (63.1 SQ.M.)

Made with Metropix ©2018

JACKSONS BALHAM

8-11 Balham Station Road,
London, SW12 9SG
Sales: 020 8675 6555
Lettings: 020 8675 6565

Energy Rating: C We aim to make our particulars both accurate and reliable. However they are not guaranteed; nor do they form part of an offer or contract. If you require clarification on any points then please contact us, especially if you're traveling some distance to view. Please note that appliances and heating systems have not been tested and therefore no warranties can be given as to their good working order.