

SW19

it's all in the postcode...



SW19

Gap Road

£535,000

- Split level period flat
- Sought after location
- Two bedrooms
- Share of freehold
- Well presented throughout
- Roof terrace
- Council tax Band C
- EPC Rating C



020 8544 2828

Wimbledon: Wimbledon Park: Colliers Wood

www.SW19.com

SW19 Estate Agents Ltd. Is registered in England & Wales No. 05508737

it's all in the postcode...

This delightful two-double-bedroom, split-level period conversion flat combines character, space, and style. The reception room boasts an impressive vaulted ceiling, creating a bright and airy atmosphere, while the property is beautifully presented throughout. From the roof, enjoy stunning panoramic views across London – a truly rare feature. Additional benefits include a share of the freehold, offering security and peace of mind. Ideally situated on the corner of Albany Road, the flat is just moments from Leopold Parade, with its boutique cafés, shops, and vibrant bars. Wimbledon Park and Wimbledon Town Centre are also nearby, providing excellent transport links via the District Line and overground services. A stylish, move-in-ready home in one of Wimbledon's most desirable locations – not to be missed!



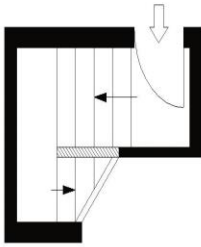
020 8544 2828
Wimbledon: Wimbledon Park: Colliers Wood
www.SW19.com
SW19 Estate Agents Ltd. Is registered in England & Wales No. 05508737

'it's all in the postcode...'

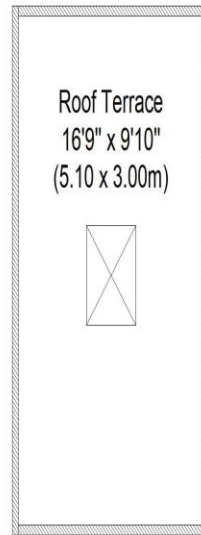
Gap Road

Approximate Gross Internal Area (Excluding The Roof Terrace)

801 sq ft / 74.43 sq m

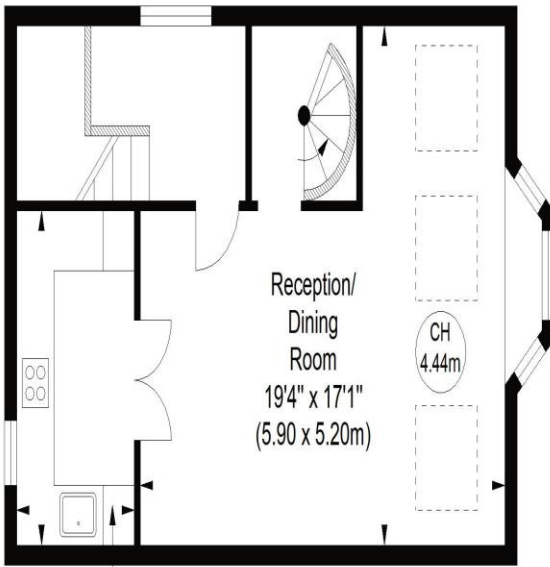


Ground Floor



Roof Terrace
16'9" x 9'10"
(5.10 x 3.00m)

Third Floor

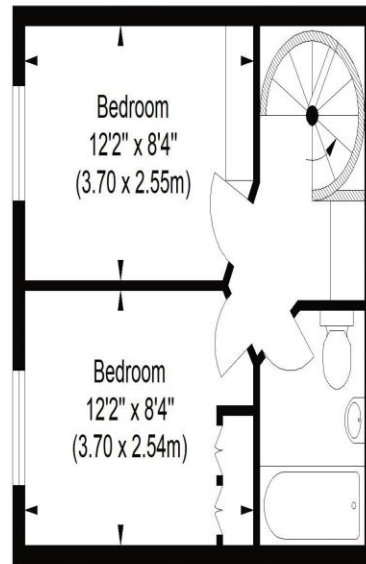


Kitchen
10'11" x 6'3"
(3.33 x 1.90m)

First Floor

Reception/
Dining
Room
19'4" x 17'1"
(5.90 x 5.20m)

CH
4.44m



Bedroom
12'2" x 8'4"
(3.70 x 2.55m)

Bedroom
12'2" x 8'4"
(3.70 x 2.54m)

Second Floor

ILLUSTRATION FOR IDENTIFICATION PURPOSES ONLY

ALL MEASUREMENTS ARE MAXIMUM, AND INCLUDE WINDOW BAYS AND WARDROBES WHERE APPLICABLE
THIS PLAN MUST NOT BE REPRODUCED BY ANY OTHER PERSON WITHOUT PERMISSION

SW19

020 8544 2828

Wimbledon: Wimbledon Park: Colliers Wood

www.SW19.com

SW19 Estate Agents Ltd. Is registered in England & Wales No. 05508737

'it's all in the postcode...'

These particulars are for guidance only and should not be relied upon as a statement or representation of fact. All measurements given are approximate only and should not be relied upon for ordering carpets, equipment etc. Purchasers should satisfy themselves by inspection or otherwise as to the accuracy of the statements contained within. Neither SW19 estate agents ltd or related companies or their employees can confirm structural conditions of the property or that any appliances or other facilities are in working order. Purchasers are strongly recommended to arrange their own survey.

020 8544 2828

Wimbledon: Wimbledon Park: Colliers Wood

www.SW19.com

SW19 Estate Agents Ltd. Is registered in England & Wales No. 05508737

'it's all in the postcode...'