



**Kingston Close, Plympton PL7 2XA**

**welcome to**

**Kingston Close, Plympton**

A well-presented three-bedroom semi-detached home in the popular area of Kingston Close, Plympton, offering spacious living accommodation including a lounge, separate dining room, rear garden, and garage en bloc — ideal for families or first-time buyers.



### Entrance Hall

A radiator fixed to the wall, door entrance to the lounge and stairs to the first floor landing.

### Lounge

Double glazed window to the front with a radiator and under stairs storage.

### Dining Room

Double glazed window to the rear and a radiator and door access to the kitchen.

### Kitchen

Space for washer, cooker and fridge/freezer. Double glazing to the rear and side access door to the rear garden. Storage options such as a pantry and cupboard housing the boiler.

### First Floor Landing

Loft hatch, access to bathroom and w/c as well as all 3 bedrooms. Double glazing to the side elevation.

### Bedroom 1

Double glazing to the front elevation, built in storage and a radiator.

### Bedroom 2

Radiator and double glazing to the rear with built in storage.

### Bedroom 3

Double glazing to the front and a radiator with built in storage.

### Bathroom

Walk in shower, vanity sink, obscure double glazing to the rear.

### W/C

Obscure double glazing to the rear and w/c.

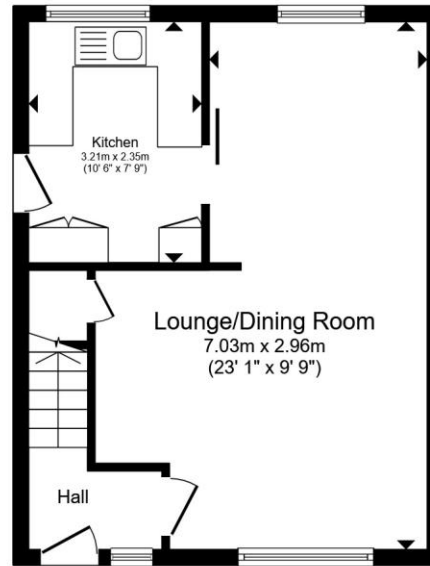
### Rear Garden

Decking and hard standing shed, laid to lawn and flower beds.

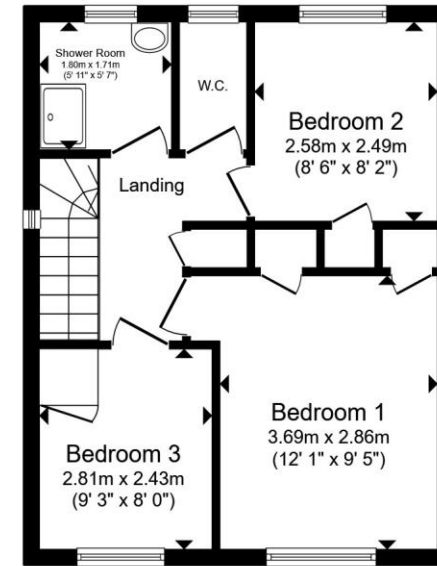
### Front Garden

Side access to the rear, gravel and hand rail with steps up to the front door.

### Garage



Ground Floor



First Floor

Total floor area 76.1 m<sup>2</sup> (819 sq.ft.) approx

This floor plan is for illustrative purposes only. It is not drawn to scale. Any measurements, floor areas (including any total floor area), openings and orientation are approximate. No details are guaranteed, they cannot be relied upon for any purpose and they do not form part of any agreement. No liability is taken for any error, omission or misstatement. A party must rely upon its own inspection(s). Powered by [www.propertybox.io](http://www.propertybox.io)

 fox & sons



**view this property online** [fox-and-sons.co.uk/Property/PYP104189](http://fox-and-sons.co.uk/Property/PYP104189)



welcome to

## Kingston Close, Plympton

- Three well-proportioned bedrooms
- Semi-detached property
- Rear garden
- Garage en bloc
- Popular residential location

Tenure: Freehold EPC Rating: C  
Council Tax Band: C

offers in the region of

**£250,000**



Please note the marker reflects the  
postcode not the actual property

view this property online [fox-and-sons.co.uk/Property/PYP104189](https://fox-and-sons.co.uk/Property/PYP104189)



Property Ref:  
PYP104189 - 0003

1. MONEY LAUNDERING REGULATIONS Intending purchasers will be asked to produce identification documentation at a later stage and we would ask for your co-operation in order that there is no delay in agreeing the sale. 2. These particulars do not constitute part or all of an offer or contract. 3. The measurements indicated are supplied for guidance only and as such must be considered incorrect. Potential buyers are advised to recheck measurements before committing to any expense. 4. We have not tested any apparatus, equipment, fixtures or services and it is in the buyers interest to check the working condition of any appliances. 5. Where an EPC, or a Home Report (Scotland only) is held for this property, it is available for inspection at the branch by appointment. If you require a printed version of a Home Report, you will need to pay a reasonable production charge reflecting printing and other costs. 6. We are not able to offer an opinion either written or verbal on the content of these reports and this must be obtained from your legal representative. 7. Whilst we take care in preparing these reports, a buyer should ensure that his/her legal representative confirms as soon as possible all matters relating to title including the extent and boundaries of the property and other important matters before exchange of contracts.

fox & sons



**01752 344349**



[plympton@fox-and-sons.co.uk](mailto:plympton@fox-and-sons.co.uk)



143 Ridgeway, Plympton, PLYMOUTH, Devon,  
PL7 2HJ



[fox-and-sons.co.uk](https://fox-and-sons.co.uk)