



Wyndhurst Road, Birmingham







## Property Description

Link DETACHED!! STUNNING SIMPLY STUNNING! FIVE DOUBLE BEDROOMS!! TWO Family bathrooms! In a great location in Stechford close to local transport links, schools and amenities! Beautifully presented and just ready to move into! This is the PERFECT FAMILY HOME! CALL NOW 01217421725!!!!

## Entrance Hallway

Door to front elevation, central heating radiator and stairs to first floor accommodation.

## Cloakroom

Storage area.

## Lounge

22' 10" into bay x 12' 6" max ( 6.96m into bay x 3.81m max )

Double glazed bay window to front elevation and two central heating radiators.

## Dining Room

13' 2" x 8' 9" ( 4.01m x 2.67m )

Double glazed door to rear elevation and central heating radiator.

## Reception Room

18' 10" x 16' 8" ( 5.74m x 5.08m )

Double glazed window to front elevation, central heating radiator and laminate flooring.

## Kitchen

17' 5" max x 15' 8" max ( 5.31m max x 4.78m max )

L shaped room. Double glazed window to rear elevation, a range of wall and base units with work surface over incorporating a sink with drainer unit, space and connections for cooker and washing machine, space for further appliances, tiled flooring, central heating boiler housed.



## Landing

Double glazed window to rear elevation, loft access via hatch and all doors off.

## Bedroom One

12' 8" into bay x 9' 9" into wardrobe ( 3.86m into bay x 2.97m into wardrobe )

Double glazed bay window to front elevation, central heating radiator and fitted wardrobes.

## Bedroom Two

12' 3" max x 9' 8" to wardrobe ( 3.73m max x 2.95m to wardrobe )

Double glazed window to rear elevation, central heating radiator and built in wardrobes.

## Bedroom Three

11' 7" x 7' 3" ( 3.53m x 2.21m )

Double glazed window to front elevation and central heating radiator.

## Bedroom Four

15' 3" x 9' 5" ( 4.65m x 2.87m )

Double glazed window to front elevation and central heating radiator.

## Bathroom

Double glazed window to rear elevation, W.C, wash hand basin, bath, extractor and tiling to walls.

## Bedroom Five

8' 5" x 6' 7" ( 2.57m x 2.01m )

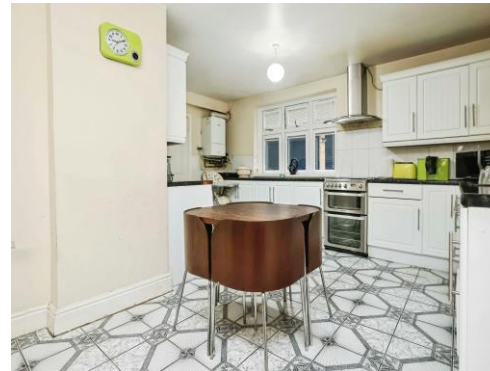
Double glazed window to front elevation, central heating radiator and fitted wardrobes.

## Ground Floor Bathroom

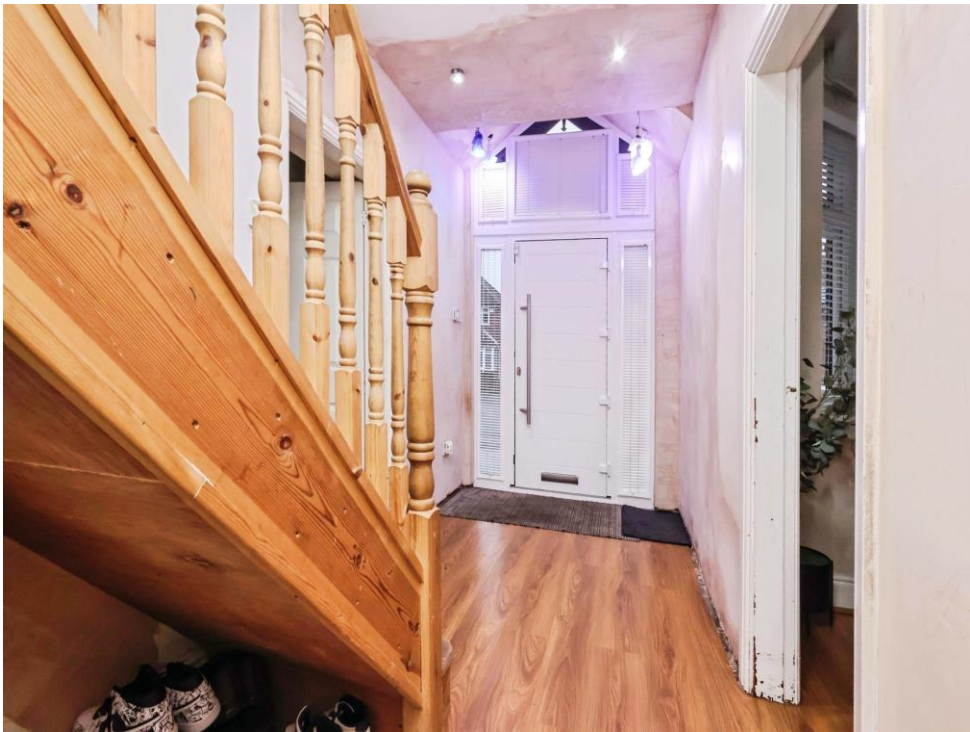
Double glazed window to side elevation, bath, W.C, wash hand basin, central heating radiator, extractor, tiling to walls and tiled flooring.

## Rear Garden

Slabbed garden with fencing to all boundaries.













**Ground Floor**



**First Floor**

Total floor area 205.3 m<sup>2</sup> (2,210 sq.ft.) approx

This floor plan is for illustrative purposes only. It is not drawn to scale. Any measurements, floor areas (including any total floor area), openings and orientation are approximate. No details are guaranteed, they cannot be relied upon for any purpose and they do not form part of any agreement. No liability is taken for any error, omission or misstatement. A party must rely upon its own inspection(s). Powered by [www.propertybox.io](http://www.propertybox.io)



To view this property please contact Burchell Edwards on

**T 0121 742 1725**  
**E [sheldon@burchelledwards.co.uk](mailto:sheldon@burchelledwards.co.uk)**

2208 Coventry Road Sheldon  
BIRMINGHAM B26 3JH

EPC Rating: E Council Tax  
Band: D

Tenure: Freehold

**view this property online** [burchelledwards.co.uk/Property/SHL211322](http://burchelledwards.co.uk/Property/SHL211322)



1. MONEY LAUNDERING REGULATIONS Intending purchasers will be asked to produce identification documentation at a later stage and we would ask for your co-operation in order that there will be no delay in agreeing the sale. 2. These particulars do not constitute part or all of an offer or contract. 3. The measurements indicated are supplied for guidance only and as such must be considered incorrect. Potential buyers are advised to recheck measurements before committing to any expense. 4. We have not tested any apparatus, equipment, fixtures, fittings or services and it is in the buyers interest to check the working condition of any appliances.

Burchell Edwards is a trading name of Connells Residential which is registered in England and Wales under company number 1489613, Registered Office is Cumbria House, 16-20 Hockliffe Street, Leighton Buzzard, Bedfordshire, LU7 1GN. VAT Registration Number is 500 2481 05.

**See all our properties at [www.burchelledwards.co.uk](http://www.burchelledwards.co.uk) | [www.rightmove.co.uk](http://www.rightmove.co.uk) | [www.zoopla.co.uk](http://www.zoopla.co.uk)**

Property Ref: SHL211322 - 0003