



136 Rudston Road

Liverpool, L16 4PJ

£390,000



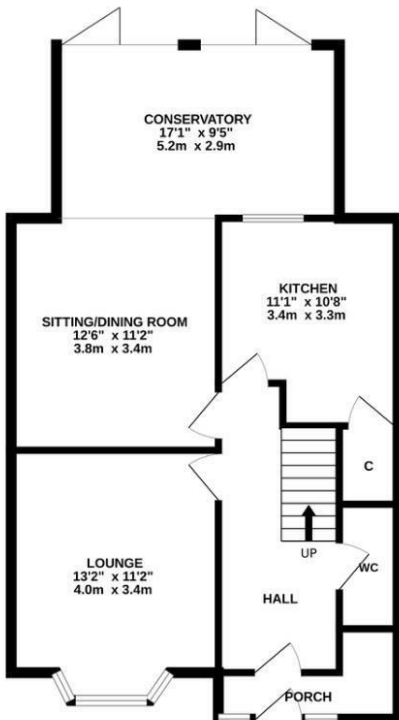
136 Rudston Road

Liverpool, L16 4PJ

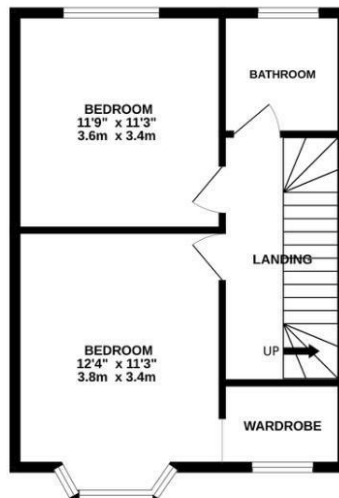
£390,000



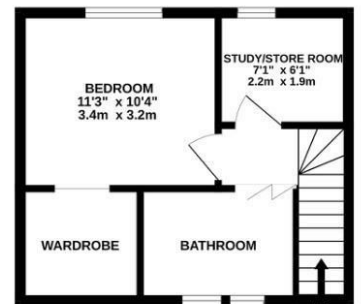
GROUND FLOOR
689 sq.ft. (64.0 sq.m.) approx.



1ST FLOOR
443 sq.ft. (41.2 sq.m.) approx.



2ND FLOOR
276 sq.ft. (25.6 sq.m.) approx.



TOTAL FLOOR AREA : 1407 sq.ft. (130.7 sq.m.) approx.

Whilst every attempt has been made to ensure the accuracy of the floorplan contained here, measurements of doors, windows, rooms and any other items are approximate and no responsibility is taken for any error, omission or mis-statement. This plan is for illustrative purposes only and should be used as such by any prospective purchaser. The services, systems and appliances shown have not been tested and no guarantee as to their operability or efficiency can be given.
Made with Metropix ©2026



Road Map



Hybrid Map



Terrain Map



- FULLY REFURBISHED AND EXTENDED THREE-BEDROOM SEMI-DETACHED HOME
- PRIME CHILDWALL LOCATION OPPOSITE RUDSTON PRIMARY SCHOOL
- OPEN DINING AND LIVING SPACE WITH BI-FOLD DOORS
- PRIMARY BEDROOM WITH MEDIA WALL AND WALK-IN DRESSING ROOM
- CONVERTED LOFT ROOM WITH STUDY & BATHROOM
- LOW-MAINTENANCE GARDEN WITH TIMBER GYM / HOME OFFICE AND EV CHARGING
- TENURE LEASEHOLD - COUNCIL TAX BAND C

Viewing

Please contact our Allerton Office on 01516013003 if you wish to arrange a viewing appointment for this property or require further information.

These particulars, whilst believed to be accurate are set out as a general outline only for guidance and do not constitute any part of an offer or contract. Intending purchasers should not rely on them as statements of representation of fact, but must satisfy themselves by inspection or otherwise as to their accuracy. No person in this firms employment has the authority to make or give any representation or warranty in respect of the property.

Energy Efficiency Graph

