



# HARDINGS

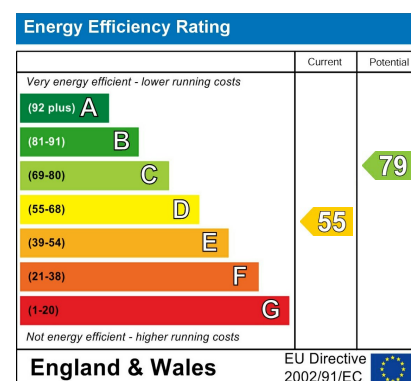


Turks Head Court  
Price Guide £1,250,000



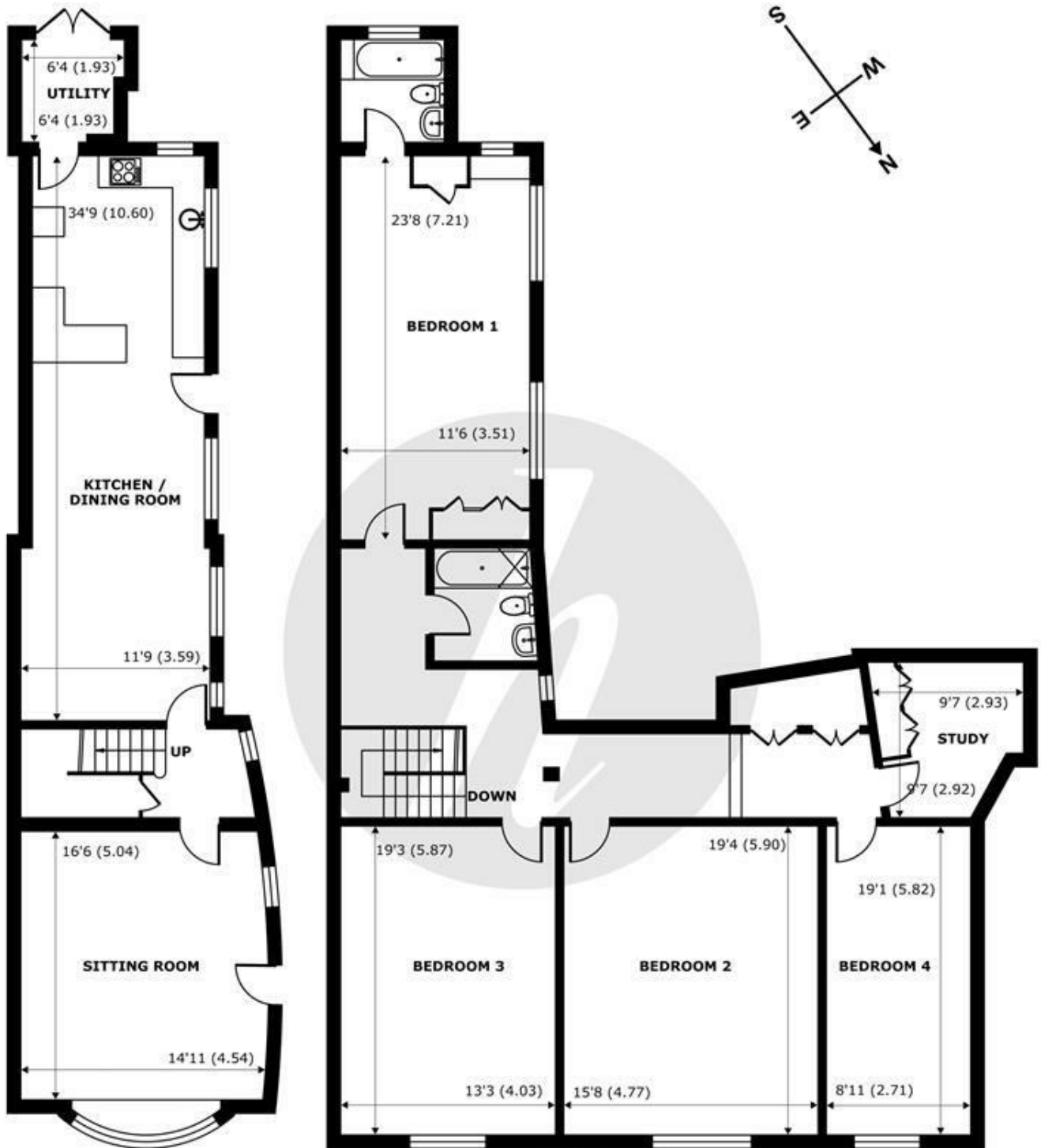


Dating back to the seventeenth century, Turks Head Court is an attractive timber-framed building with a passage through the centre leading to a row of pretty cottages on either side of a decorated narrow lane. Located to the left of the passage, this spacious white-washed four bedroomed terraced property is located in the heart of the historic town of Eton and benefits from a newly fitted kitchen, a wealth of original period features, including leaded windows, gabled ceilings and beams and a garage.



## Features

- Four bedroom House Dating Back to The Seventeenth Century
- Garage & Parking
- South Facing Courtyard Garden
- Generous Accommodation
- No Onward Chain
- Abundance of Period Features
- Central Location in the Historic Town of Eton
- Newly Fitted Kitchen



## Turks Head Court, Eton Court, Eton, Windsor, SL4

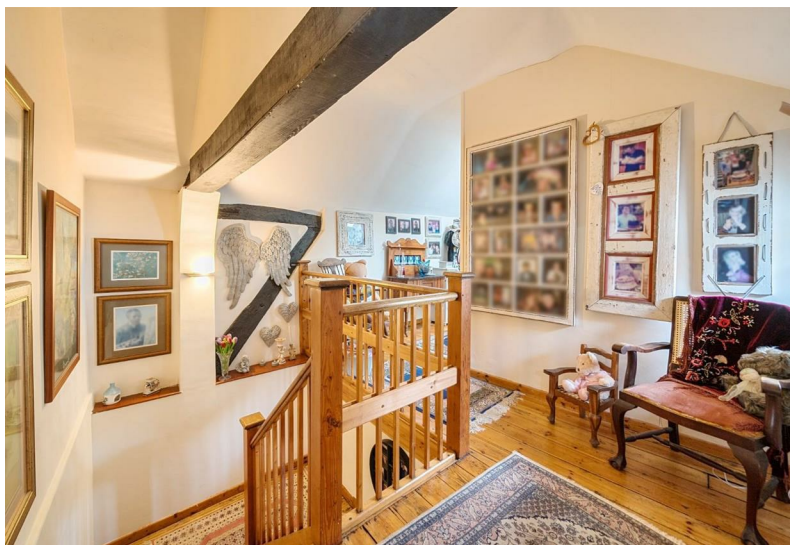
Approximate Internal Area = 2282 sq ft / 212 sq m  
 Approximate External Area = 2604 sq ft / 241.9 sq m

For identification only - Not to scale



Floor plan produced in accordance with RICS Property Measurement 2nd Edition, Incorporating International Property Measurement Standards (IPMS2 Residential). © nichecom 2025. Produced for Hardings. REF: 1373471





11 High Street, Windsor, Berkshire, SL4 1LD,  
T: 01753 833 118 | E: info@hardings.co.uk  
www.hardings.co.uk

