



Natal Road, Cambridge, CB1 3NS

**CHEFFINS**

## Natal Road

Cambridge,  
CB1 3NS

- Minimum 6 Month Tenancy
- Available from 21/04/2026
- Furnished
- EPC: D
- Council Tax Band: D
- Gas Central Heating
- Enclosed Rear Garden

A well proportioned 4 bedroom semi detached house available to a group of students or professional sharers located in the popular Romsey ward of Cambridge . The accommodation comprises entrance hall, living room, kitchen, bathroom and 4 double bedrooms. Enclosed rear garden. Furnished. Available from 21/04/2026. EPC: D and Council Tax Band: D.



£1,950 PCM





## LOCATION

Located within the desirable Romsey ward of Cambridge the property is served by an excellent range of local amenities on nearby Mill Road. Further amenities can be found in Cambridge city centre (1.2 miles) and Cambridge Retail Park (1.3 miles). The location provides excellent access to Addenbrooke's Hospital (1.7 miles) and Cambridge Trian Station and CB1 Business District (1.0 miles). (Distances approximate).



## ENTRANCE LOBBY

door to:

## HALLWAY

with stairs rising to the first floor. The living room, bedroom 1 and kitchen are accessed off the hallway.

## LIVING ROOM

with bay window to front aspect and feature fireplace (not in use). Furniture includes 2 sofas, coffee table and book case.

## KITCHEN

with base and wall units, work tops, breakfast bar, sink with window to side aspect above, pantry, oven, fridge freezer, washing machine, side door to garden and door to:

## BATHROOM

with shower over bath, wash basin with vanity unit below and window to rear aspect above, wall mounted mirrored cabinet, toilet and heated towel rail.

## BEDROOM 1

with built in cupboard and window to rear aspect. Furniture includes double bed, wardrobe, chest of drawers and desk with chair.

## STAIRS/LANDING

with fitted cupboard. Bedrooms 2, 3 & 4 are accessed off the landing.

## BEDROOM 2

with 2 windows to front aspect. Furniture includes double bed, wardrobe, chest of drawers and desk with chair.

## BEDROOM 3

with built in cupboard and window to rear aspect. Furniture includes double bed, wardrobe, chest of drawers and desk with chair.

## BEDROOM 4

with built in cupboard and window to rear aspect. Furniture includes double bed, wardrobe and chest of drawers.

## OUTSIDE

enclosed rear garden predominantly laid to lawn with patio and side access. (Garage not in use).

## LETTING AGENT NOTES

For more information on this property please refer to the Material Information brochure on our Website.

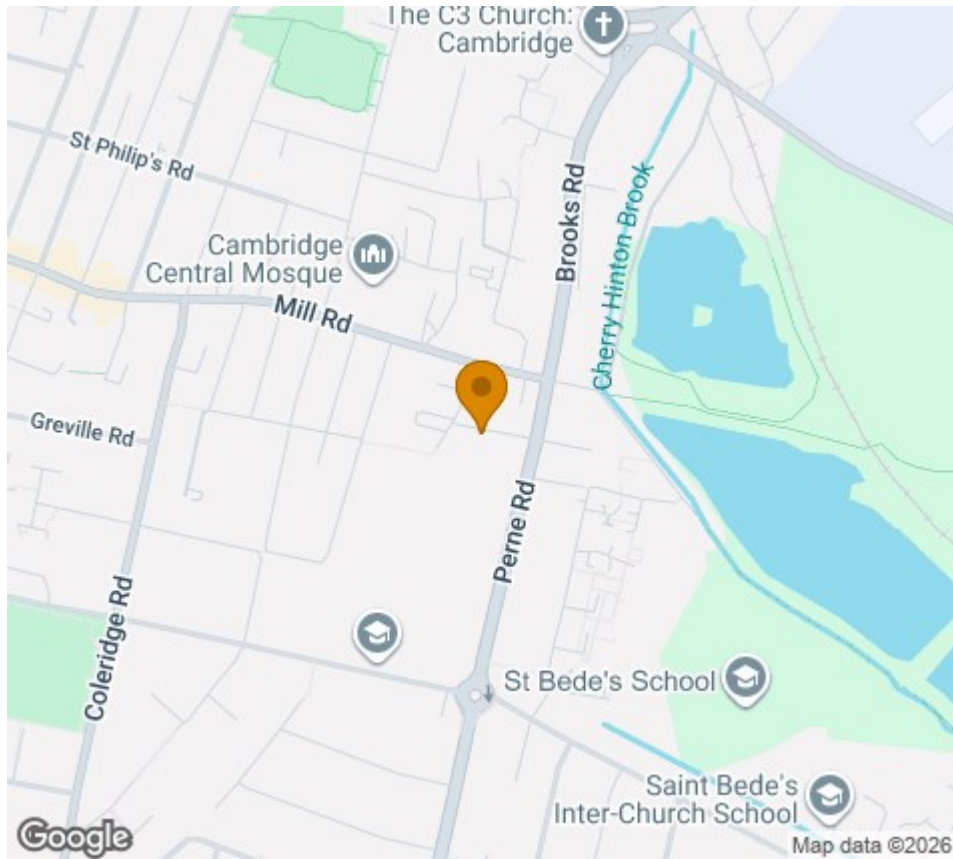
Term - Minimum 6 month tenancy

Holding Deposit - £450

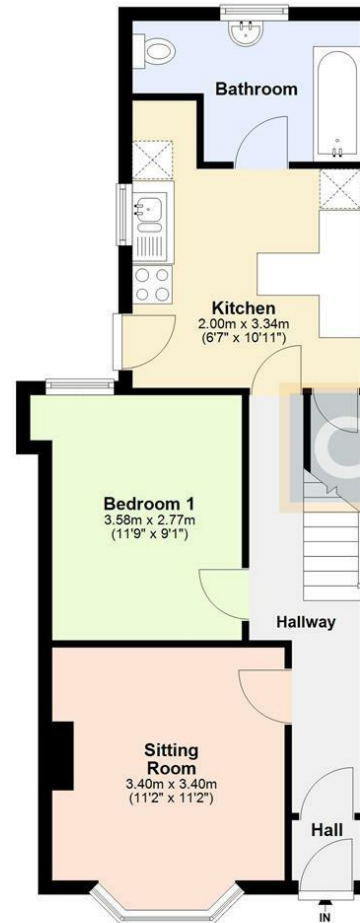
Deposit - £2250







**Ground Floor**  
Approx. 47.5 sq. metres (510.9 sq. feet)



**First Floor**  
Approx. 42.4 sq. metres (456.1 sq. feet)



Total area: approx. 89.8 sq. metres (967.0 sq. feet)

Energy Efficiency Rating	
Current	Potential
Very energy efficient - lower running costs	
(92 plus) A	83
(81-91) B	
(69-80) C	
(55-68) D	
(39-54) E	
(21-38) F	
(1-20) G	
Not energy efficient - higher running costs	
65	
EU Directive 2002/91/EC	
England & Wales	

Agents note:  
For more information on this property please refer to the Material Information Brochure on our website.

Clifton House, 1-2 Clifton Road, Cambridge, Cambridgeshire, CB1 7EA | 01223 271916 | cheffins.co.uk



IMPORTANT: we would like to inform prospective purchasers that these sales particulars have been prepared as a general guide only. A detailed survey has not been carried out, nor the services, appliances and fittings tested. Room sizes should not be relied upon for furnishing purposes and are approximate. If floor plans are included, they are for guidance only and illustration purposes only and may not be to scale. If there are any important matters likely to affect your decision to buy, please contact us before viewing the property.