



Estate Agents  
**Hurst**

51 Disraeli Crescent, High Wycombe, Bucks, HP13 5EL  
Offers In Excess Of £900,000

# 51 Disraeli Crescent, High Wycombe, Bucks, HP13 5EL

Hurst is delighted to bring to the market this rarely available and beautifully transformed four/five-bedroom detached family home. Having been extensively extended and significantly improved by the current owners, the property is presented in excellent condition throughout and offers spacious, versatile accommodation ideal for modern family living.

Occupying a generous plot directly opposite Hughenden Park and backing onto National Trust woodland, the property enjoys miles of countryside walks right on its doorstep. Despite its peaceful setting, the home is conveniently located close to the town centre, M40 and mainline railway station providing direct services to London Marylebone, making it an excellent choice for commuters.

The standout feature of the home is the striking central double-height atrium, which floods the property with natural light and creates a wonderful sense of space while offering stunning views across the Hughenden Valley. The impressive entrance hall features a vaulted ceiling and provides access to a generous coat cupboard, understairs storage, a guest cloakroom, and a large utility room with extensive storage and side access. There is also a separate cinema room, which could alternatively be used as a study, playroom, or fifth bedroom.

Two separate sets of double doors lead from the hallway to the heart of the home, a spacious open-plan L-shaped living area comprising a contemporary fitted kitchen with a central island, dining area, and lounge with feature log burner. Bi-fold doors open directly onto the rear garden, creating a seamless connection between indoor and outdoor living.

On the first floor, the spacious landing enjoys one of the property's finest views across the surrounding National Trust parkland. The principal bedroom mirrors the design of the atrium with double-height windows and a Juliet balcony overlooking the garden and Little Tinkers Wood.



**FOUR / FIVE BEDROOM DETACHED HOME**

**WONDERFULLY DESIGNED LAYOUT**

**EXTREMELY VERSATILE LIVING SPACE**

**STRIKING CENTRAL ATRIUM**

**INTERNAL & EARLY VIEWING ADVISED**

**CATCHMENT TO RGS & WYCOMBE HIGH SCHOOL**

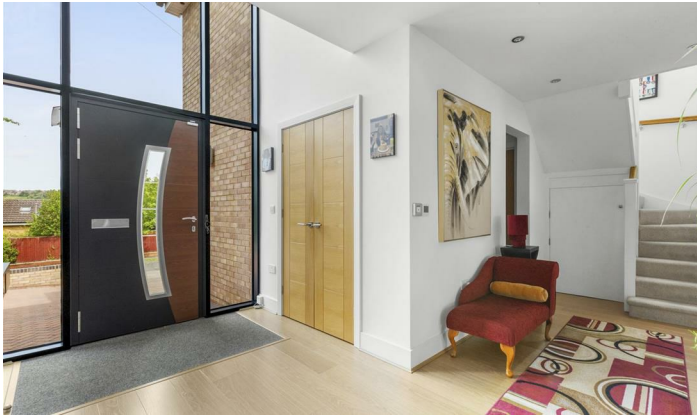
**PRINCIPLE BEDROOM WITH EN-SUITE & DRESSING ROOM**

**UTILITY ROOM & GUEST CLOAKROOM**

**CLOSE TO NATIONAL TRUST PARKLAND**

**BUILT IN WARDROBES IN MOST BEDROOMS**

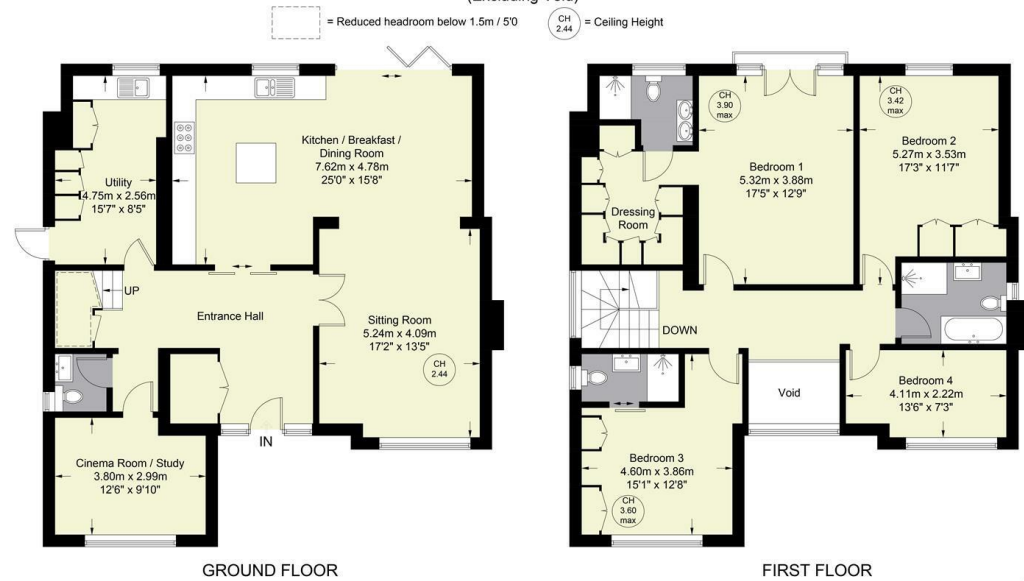






### Disraeli Crescent

Approximate Gross Internal Area  
 Ground Floor = 1127 sq ft / 104.7 sq m  
 First Floor = 1076 sq ft / 100.0 sq m  
 Total = 2203 sq ft / 204.7 sq m  
 (Excluding Void)



Floor Plan produced for Hursts by Media Arcade Ltd ©

Illustration for identification purposes only. Window and door openings are approximate. Whilst every attempt is made to assure accuracy in the preparation of this plan, please check all dimensions, shapes and compass bearings before making any decisions reliant upon them.



The Property Misdescriptions Acts 1991. Hurst Estate Agents have not tested any apparatus, equipment, fixture and fittings or services and cannot verify that they are in working order or fit for the purpose. A buyer is advised to obtain verification from their solicitor or surveyor. References to the tenure of the property are based on information supplied by the seller. Hurst Estate Agents has not had sight of the title documents. A buyer is advised to obtain verification from their solicitor.