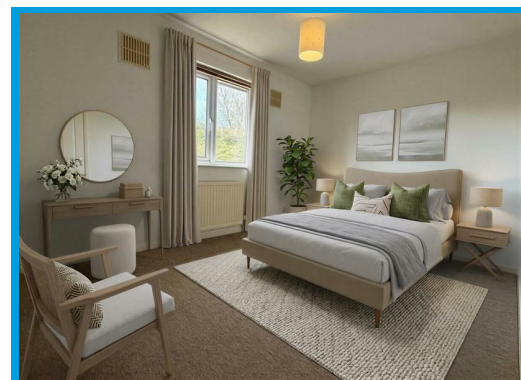
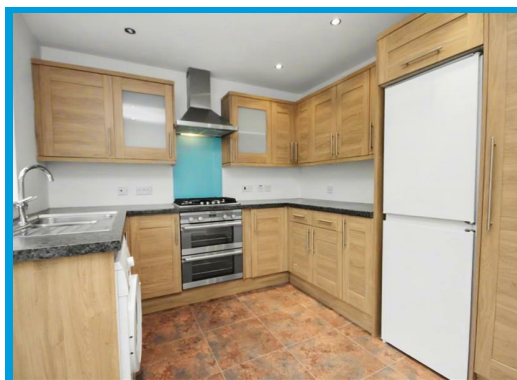




Springfield Road, Guildford Surrey, GU1 4DW

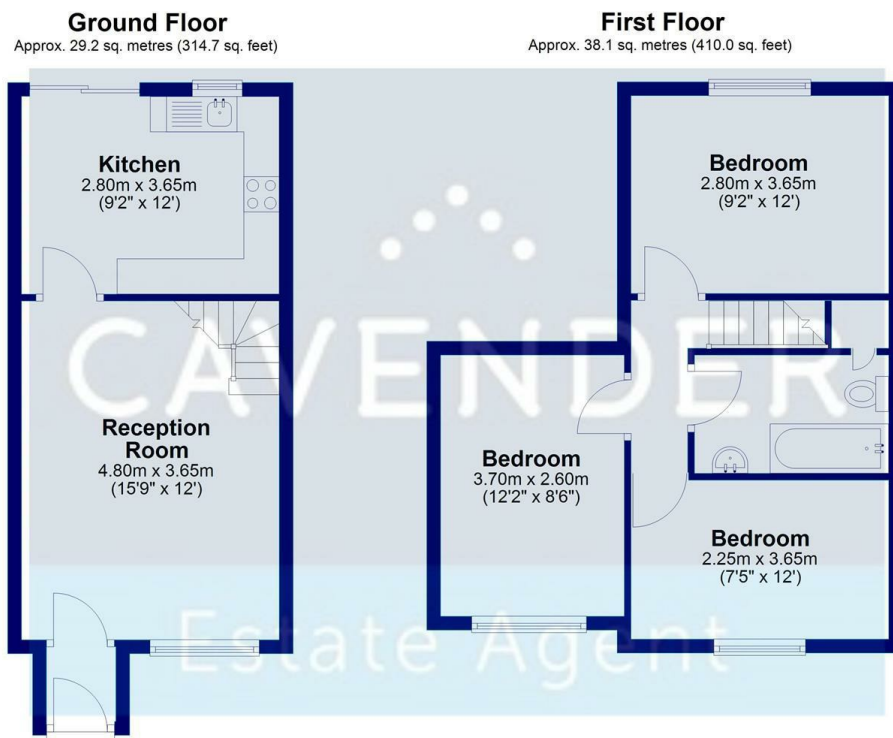
Guide Price £510,000

** No onward chain** This stunning three double bedroom mid terrace property is positioned in the heart of Guildford town centre.



Description

This stunning three double bedroom mid terrace property is positioned in the heart of Guildford town centre. The property is located at the end of a quiet cul-de-sac and comprises an entrance hall leading to a large reception room, a modern kitchen/ dining room with appliances and doors leading to the enclosed rear garden. The first floor boasts three double bedrooms and a modern bathroom suite with shower over bath. Further features include off street parking and rear access to the garden. The property is offered with no onward chain.



Total area: approx. 67.3 sq. metres (724.8 sq. feet)

