



Macfarlane Road,  
Shepherds Bush, W12

Asking Price £550,000



2



1



1

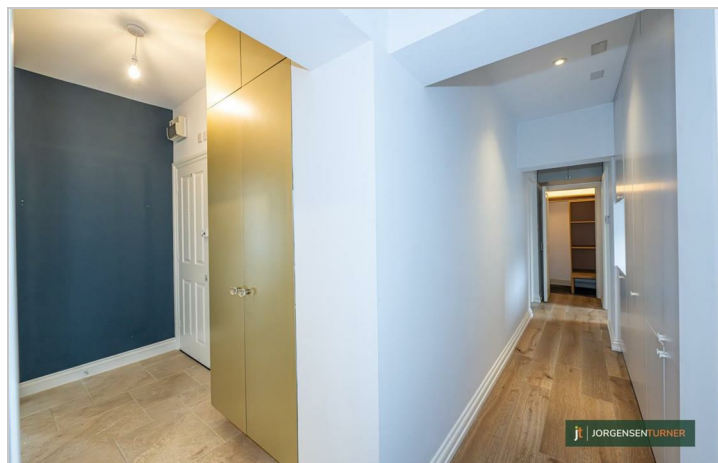


C



# Macfarlane Road, Shepherds Bush, W12

Asking Price £550,000



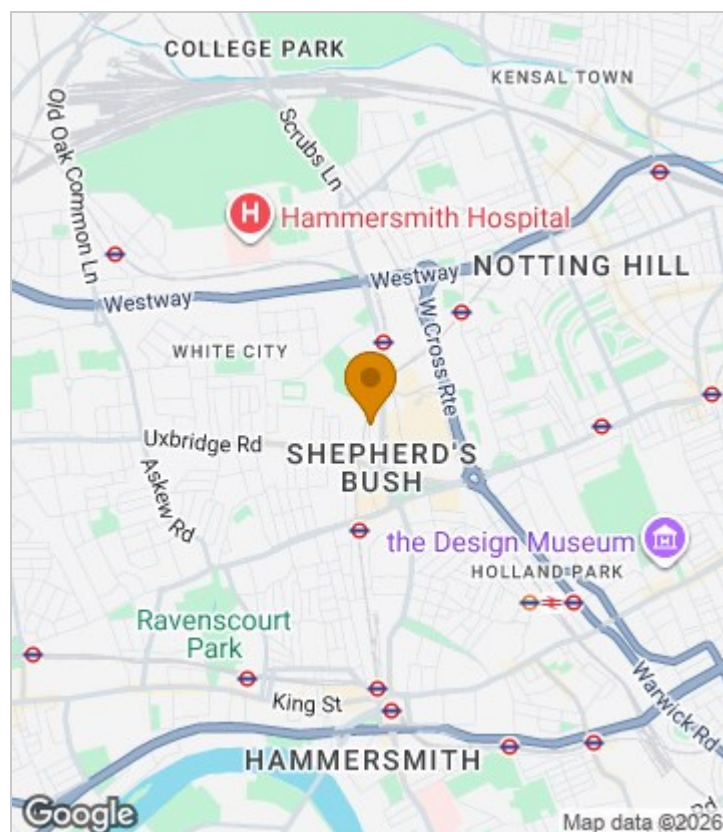
## Summary Description

McFarlane Road W12. An impressively proportioned two bedroom flat on the first floor of a doubled fronted period building. The properties layout offers something different, with an impressive reception room with high ceilings and bay window to the front aspect. There's a modern kitchen, two double bedrooms (one with integrated storage space) and shower room. The property further benefits from creatively designed storage space, a share of freehold and is offered chain free.

The location offers ultra-convenience for all the shops, bars and restaurants on the Uxbridge Road, the Westfield shopping centre, John Lewis and the infamous Soho House members club. The location is extremely well served transport wise with the Hammersmith and City and Central Line tubes, Shepherds Bush Overground station and numerous bus routes in to Central London. For recreational use the lovely Hammersmith Park is located at the end of the road.

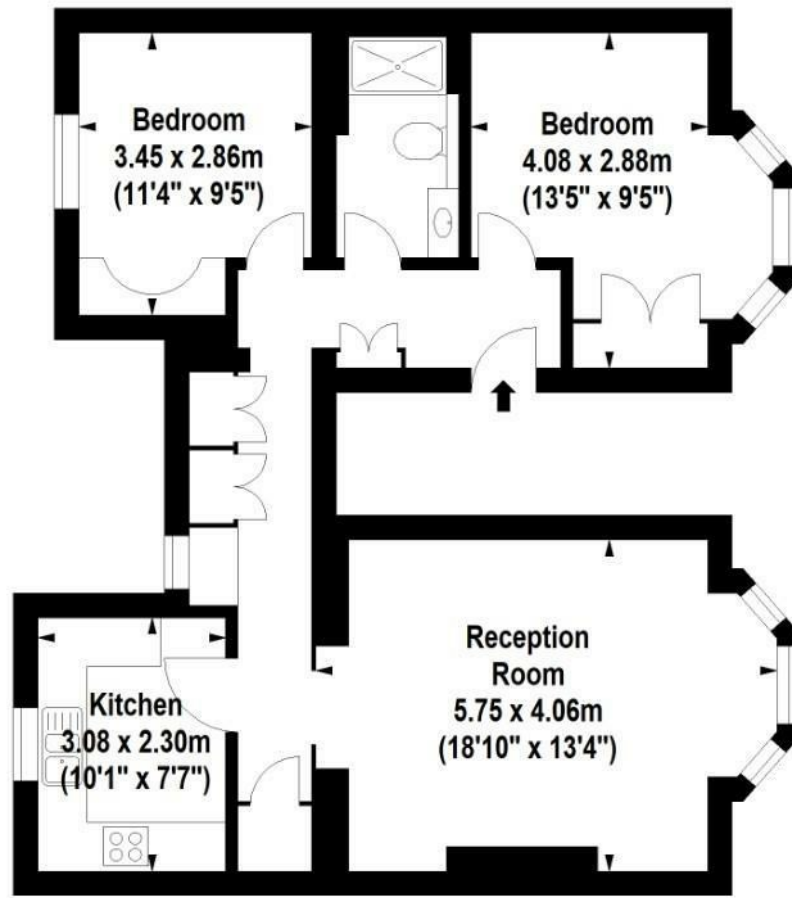
Share of Freehold, Service Charge ? Hammersmith and Fulham Band D

## Area Map





# Floor Plan



First Floor



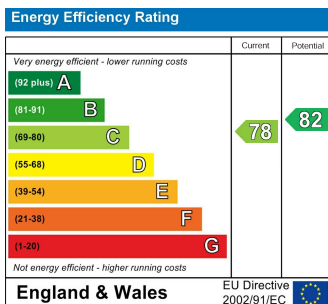
For Identification Purposes Only. Not To Scale. © www.totalvista.uk 2026

Macfarlane Road, W12

Approx. Gross Internal Area  
68.37 Sq M - 736 Sq Ft



## Energy Efficiency Graph



## Viewing

Please contact our Sales SB Office on 0208 740 8740 if you wish to arrange a viewing appointment for this property or require further information.

- IMMACULATE CONDITION
- FIRST FLOOR FLAT THROUGHOUT
- TWO BEDROOMS
- IMPRESSIVE RECEPTION ROOM
- CHAIN FREE
- COSE TO CENTRAL LINE TUBE
- WOOD FLOORING
- HIGH CEILINGS
- SHARE OF FREEHOLD
- MOMENTS FROM WESTFIELD WHITE CITY

For further information contact:

Sales SB, 234 Uxbridge Road, Shepherds Bush, London, W12 7JD

Tel: 0208 740 8740 Email: [enquiries@jorgensenturner.com](mailto:enquiries@jorgensenturner.com)

<https://www.jorgensenturner.com/>

### Disclaimer

These particulars, whilst believed to be accurate are set out as a general outline only for guidance and do not constitute any part of an offer or contract. Intending purchasers should not rely on them as statements of representation of fact, but must satisfy themselves by inspection or otherwise as to their accuracy. No person in this firm's employment has the authority to make or give any representation or warranty in respect of the property.