




Park Farm Close, Horsham

Guide Price £775,000

 4  2  2



An Extended Family Home located towards the end of a quiet North Horsham Cul De Sac, boasting a stunning 31ft Kitchen Dining Room, a further two large Reception Rooms and a Luxurious Principle Suite with a 12ft high vaulted ceiling, Dressing Area and En Suite Shower Room.

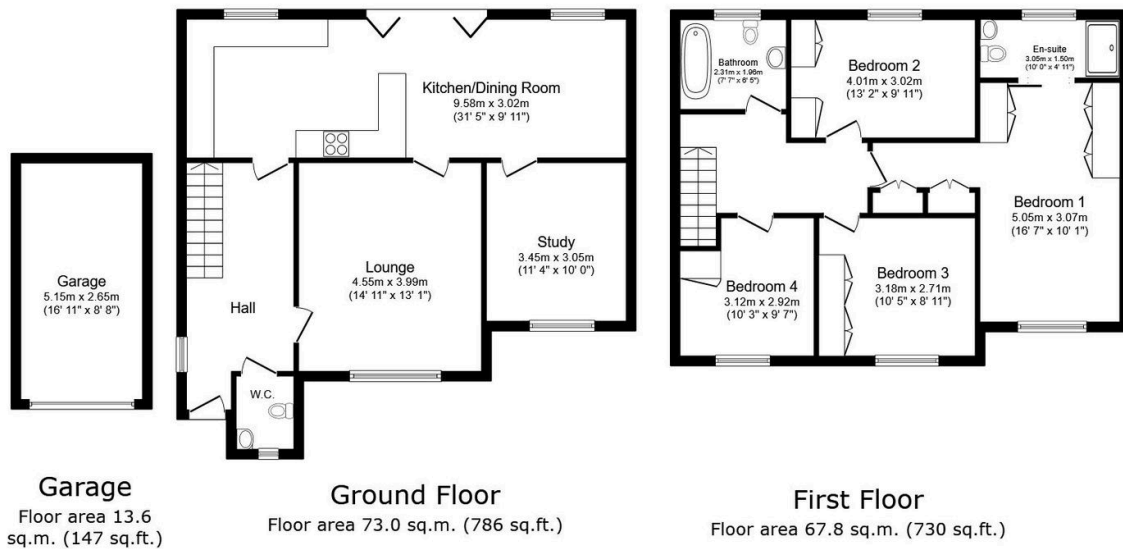
Tenure: Freehold

Council Tax: Band E

EPC Rating: Current C - Potential C

Key Features

- Watch Our Video Tour
- Luxurious Principle Suite with 12ft High Ceiling
- Living Room & Study/Family Room
- Popular North Horsham Cul De Sac
- Beautifully Presented Throughout
- Stunning 31ft Kitchen Dining Room
- Four Generous Bedrooms
- Garage & Driveway Parking
- Extended Detached Family Home
- Close To Popular Schools



Total floor area: 154.5 sq.m. (1,663 sq.ft.)

This floor plan is for illustrative purposes only. It is not drawn to scale. Any measurements, floor areas (including any total floor area), openings and orientations are approximate. No details are guaranteed, they cannot be relied upon for any purpose and do not form any part of any agreement. No liability is taken for any error, omission or misstatement. A party must rely upon its own inspection(s). Powered by www.Propertybox.io