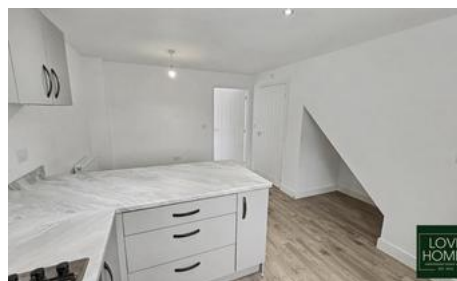
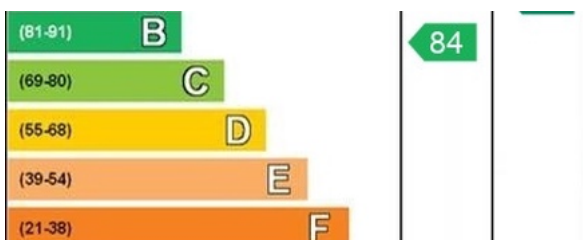




10 Swanage Close Cottam



- ✓ Stylish Semi-detached Property Spanning Three Levels
- ✓ Open Plan Kitchen/dining Area
- ✓ Integrated Appliances - Dishwasher, Washing Machine, Fridge/freezer
- ✓ 3 Generously Proportioned Bedrooms
- ✓ Ensuite For Third Floor Bedroom
- ✓ Property Split Over 3 Levels
- ✓ Enclosed Rear Garden
- ✓ Driveway



Price: £1,250
Tenure: Not Specified

Bedroom 3 Bathroom 2 Reception 1