



THURLOE COURT

CHELSEA SW3



A wonderful two bedroom, two bathroom apartment on the 3rd floor with a lift and caretaker in Thurloe Court on the Fulham Road. The property is finished to a high standard and offers two double bedroom both with en-suites bathrooms, a guest cloakroom, modern kitchen and a large reception room with views over Pelham Crescent.

Thurloe Court is in close proximity to the shops, bars and restaurants of the Fulham Road. Public transport connections via South Kensington Underground Station are a short distance away and this is also a location that is highly regarded for its convenient proximity to King's Road, Sloane Square and Brompton Road.



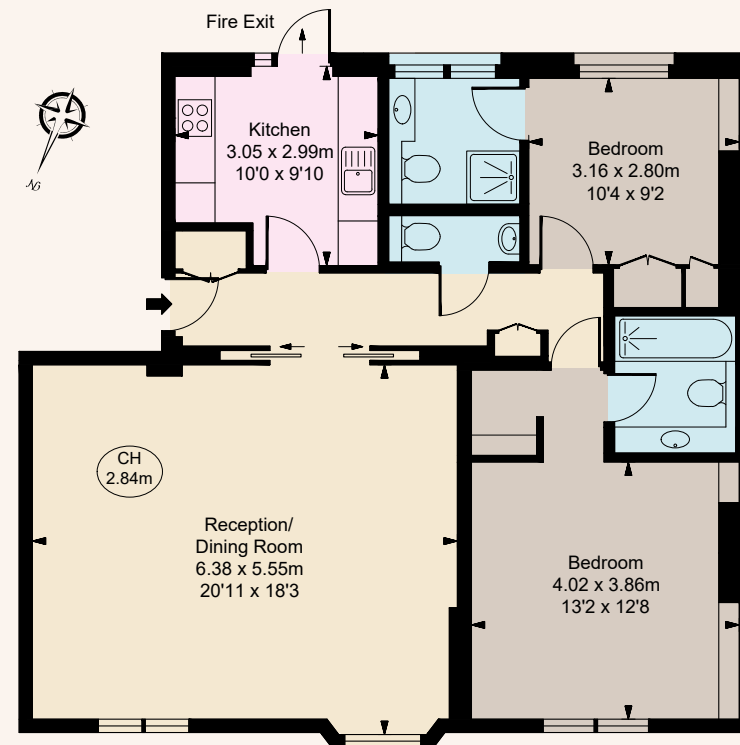
FEATURES

- Principal Bedroom with En-Suite Bathroom
- Double Bedroom with En-suite Shower Room
- Guest WC
- Reception Room
- Kitchen
- Porter
- Lift

APPROX. GROSS INTERNAL AREA

1,006 SQ FT / 93.44 SQ M

(CH = CEILING HEIGHTS)



THIRD FLOOR

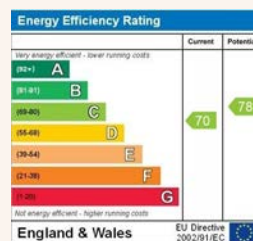


PRICE: £1,950,000

TENURE: Leasehold with 141 Years Remaining

SERVICE CHARGE: Approx £7,516 per annum

These details have been prepared for general guidance only and should not be relied upon by prospective purchaser/ tenants who before proceeding must check and otherwise satisfy themselves as to the property and the nature, state and availability of any facility or service.



www.nicolasvanpatrick.com