



Oakland Avenue, Cheltenham, GL52 3EP

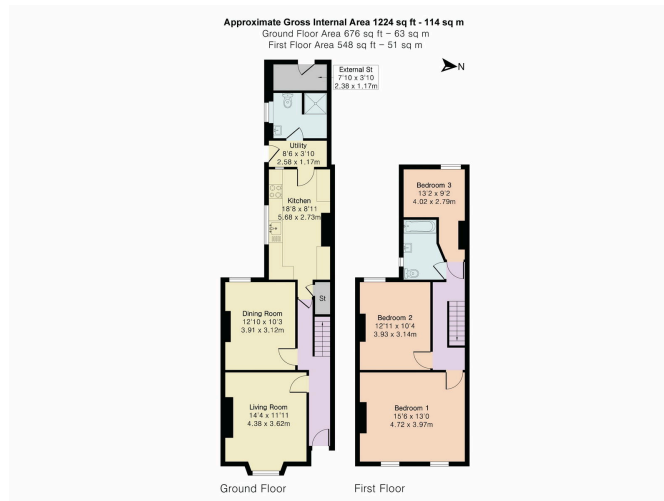
£500,000

🛏 3 🍳 2 🛋 2





A rarely available 3-bedroom semi-detached period house in Cheltenham, offering a superb renovation opportunity. Built before 1900 and under the same ownership for over 50 years, this 1,224 sq ft property, which has been let for the past decade, presents a blank canvas to create a fantastic family home. It boasts a traditional layout with two reception rooms, an existing attic with development potential, and a freehold tenure in a desirable location.



PINK PLAN

Floor plan produced in accordance with RICS Property Measurement 2nd Edition. Although Pink Plan Ltd ensures the highest level of accuracy, measurements of doors, windows and rooms are approximate and no responsibility is taken for error, omission or misstatement. These plans are for representation purposes only and no guarantee is given on the total square footage of the property within this plan. The figure is for initial guidance only and should not be relied on as a basis of valuation.

