



Oxford Gardens, W10

£475,000

A one bedroom apartment on the first floor of a well maintained Victorian conversion. The property has a dual aspect, open plan reception with a fitted kitchen and plenty of space to dine, high ceilings and solid wood flooring. The large bedroom has custom built-in storage and leads onto a contemporary bathroom.

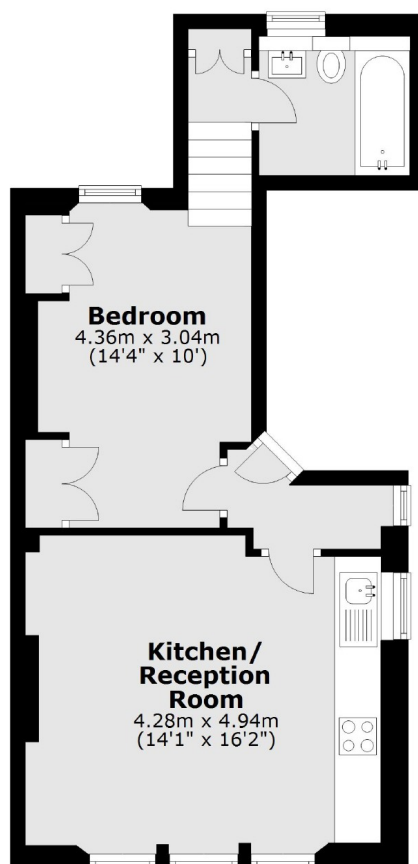
Oxford Gardens is a tree lined street on a sought after residential road in prime W10 within close proximity to Ladbroke Grove, Portobello Road and Ladbroke Grove underground station.

Features

- Offers in Excess of £475,000
- Dual Aspect Reception
- High Ceilings
- Solid Wood Flooring
- Open Plan
- Low Service Charge

Oxford Gardens, London, W10

First Floor



Total area: approx. 42.6 sq. metres (458.3 sq. feet)