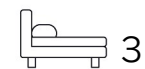




Living  
made  
better

Charles Darwin House  
Canning Town, E16 1YE



25% Shared Ownership £146,250

# Charles Darwin House, Canning Town, E16 1YE

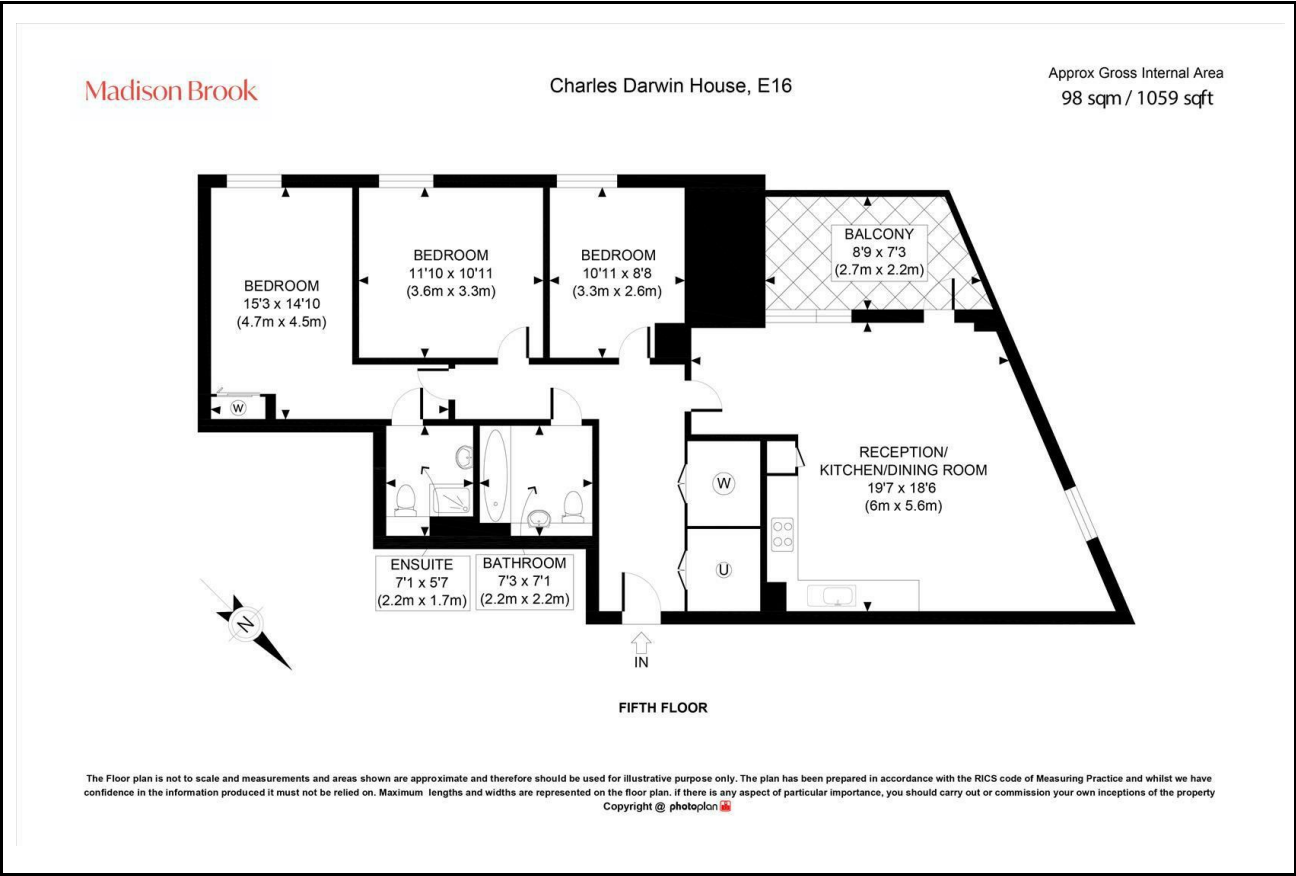
Madison Brook

### Property Summary

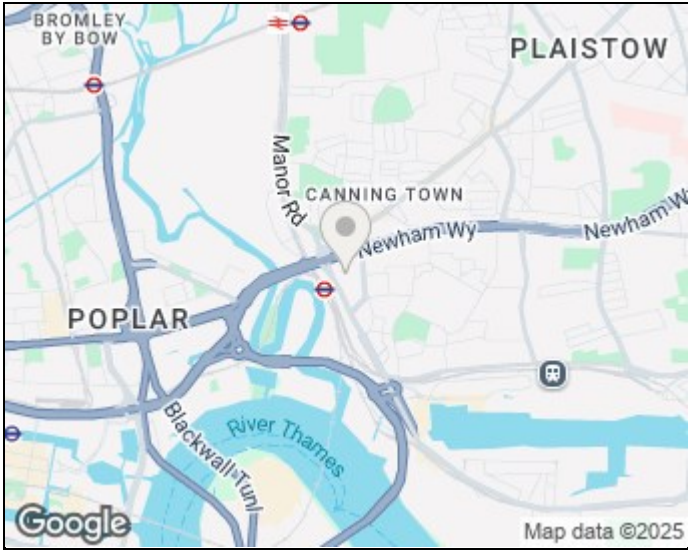
Spacious three-bedroom apartment in Charles Darwin House, Hallsville Quarter. Situated on the 5th floor and spanning 1,059 sq. ft., the property features an open-plan kitchen/reception leading to a private balcony, two bathrooms (including en-suite), and a versatile third bedroom or office. Residents benefit from onsite amenities, supermarkets, cafés, private parking, and easy access to Canning Town station.

Offered with a 117-year lease, available at £585,000 (100% share) or £146,250 (25% share).  
Annual Service Charge: £5,697

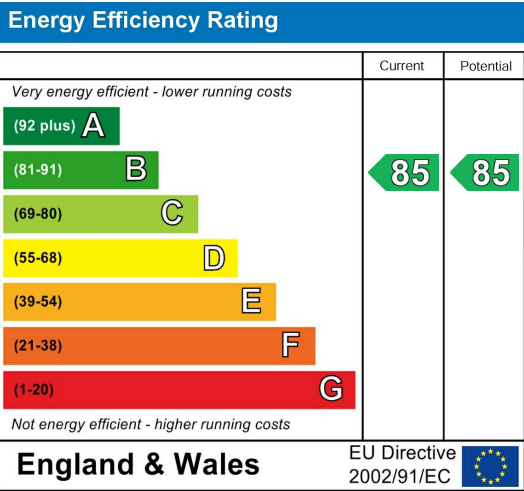
### Floorplan



### Area Map



### Energy Efficiency Graph



These particulars, whilst believed to be accurate are set out as a general outline only for guidance and do not constitute any part of an offer or contract. Intending purchasers should not rely on them as statements of representation of fact, but must satisfy themselves by inspection or otherwise as to their accuracy. No person in this firm's employment has the authority to make or give any representation or warranty in respect of the property.

Unit B 20 Western Gateway, Royal Victoria  
Dock, London, E16 1BS  
Tel: 020 3946 6000 Email:  
docklands@madisonbrook.com  
<https://madisonbrook.com/>