

G & H

Riverpark Gardens
Bromley

Guide Price
£350,000



This beautifully presented two bedroom split level maisonette is located just a few minutes walk from Ravensbourne Station and Beckenham Place Park. Offering 727 sq ft of accommodation and the benefit of a newly extended lease with over 179 years remaining.

Located on the second floor of the building the private entrance leads to a spacious hallway with built in storage and then the modern fitted kitchen. The bright and airy reception room with benefits from a west facing balcony with uninterrupted views overlooking the river Ravensbourne and open parkland. To the first floor are to be found two double bedrooms and the family bathroom off a central landing which boasts additional storage. Benefitting from gas central heating and double glazed windows in addition to a low service charge of just £802 per annum and ground rent of just £10 per annum.



Riverpark Gardens was built in 1961 and won the Civic Trust Award shortly after its construction marking it as an award winning development in its time, it is a peaceful and quiet spot tucked away but yet still within proximity of plenty of amenities including shops, restaurants, cafe's and popular schools.. We strongly advise your internal inspection to appreciate the standard of accommodation on offer.



Tenure: Leasehold

Bedrooms: 2

Bathrooms: 1

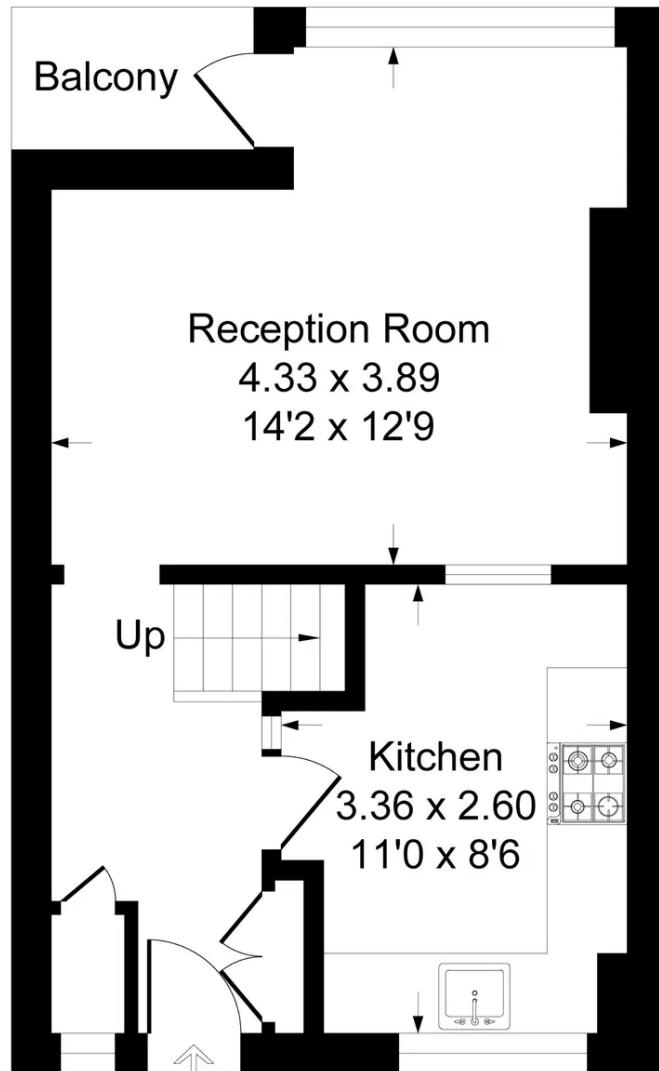
Receptions: 1

Council Tax Band: C

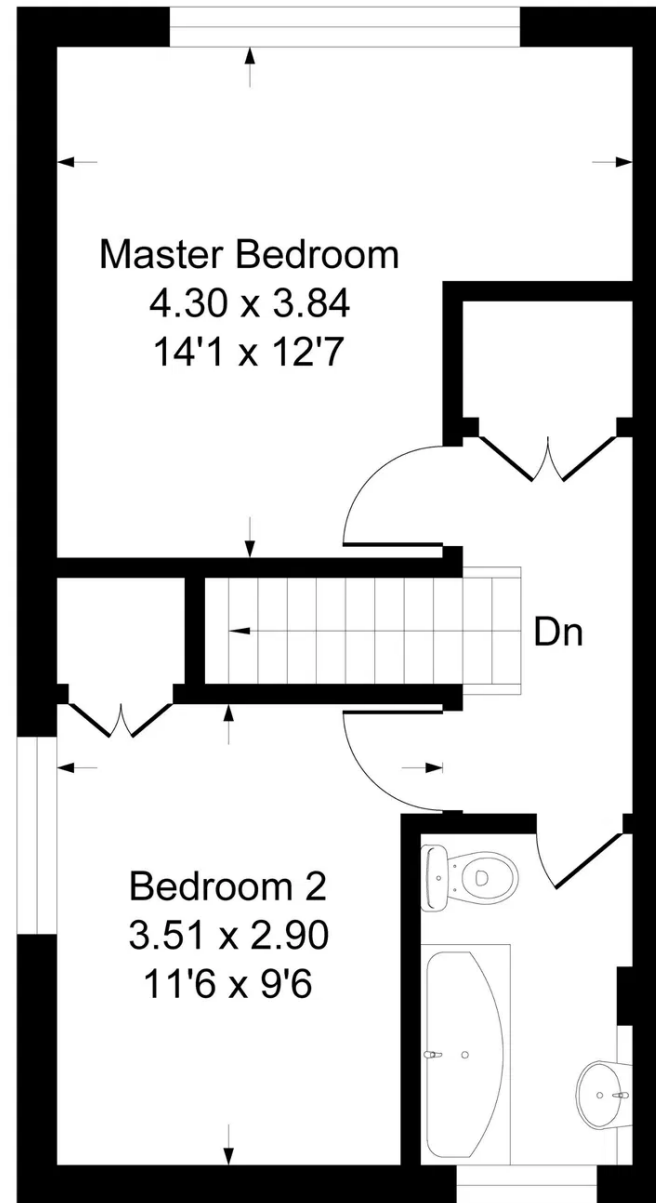
- Two Bedroom Split Level Maisonette
- 727 SQ FT
- Spacious Reception Room with Balcony
- Overlooking Open Parkland
- Beautifully Presented Throughout
- Modern Fitted Kitchen & Bathroom
- 179 Year Lease
- £802 pa Service Charge
- £10 pa Ground Rent
- Close Proximity to Ravensbourne Station



Approximate Gross Internal Area 67.5 sq m / 727 sq ft



Second Floor



Third Floor





GOATLEY & HIRST

020 8464 8705
sales@goatleyhirst.com
www.goatleyhirst.com

1 Elmfield Park, Bromley, BR1 1LU