



Allan Morris
estate agents

**Humble Bee Hall, Hollybush,
Castlemorton, HR8 1ET**

 **MAYFAIR**
OFFICE GROUP

Hollybush, Castlemorton, HR8 1ET

A charming Grade II, black and white cottage sat in around 2 acres of paddocks and orchards, with stabling, triple garaging and direct access onto Castlemorton Common. This rural escape is one of only two properties in a secluded valley providing a truly tranquil rural retreat. The characterful accommodation comprises of: triple aspect sitting room with inglenook fireplace and woodburner, separate dining room, two room fitted kitchen, ground floor bathroom, first floor main bedroom, two further linked double bedrooms. The property has central heating, an external utility and wood store, and has its own cottage gardens, then surrounded by paddocks. The two acres are split into three paddocks and have direct access onto the common, ideal for riding straight from home. There is also a triple bay border oak garage, orchard and plenty of space to park additional vehicles or a motorhome.



LOCATION - HOLLYBUSH

Hollybush is a small rural hamlet located at the southern end of the Malvern Hills Area of Outstanding Natural Beauty (AONB), close to the borders of both Gloucestershire and Herefordshire. It has easy access to Malvern and Ledbury for shops, schooling and entertainment. The M50 junction 1 is just over 3 miles away and so despite its rural position, modern conveniences are readily at hand.

SITTING ROOM

Accessed via a solid wood door from the cottage garden, a light and airy triple aspect sitting room with windows to front side and rear overlooking the gardens. Exposed beams, two wall light points, feature opened inglenook fireplace with floor mounted Clearview wood burner on flagstone hearth and former bread oven to side, stairs to first floor with understairs storage cupboard, cottage style latched door to kitchen, cottage style latched door to:

DINING ROOM

Rear aspect window, ceiling light point, exposed ceiling and wall beams, feature open fireplace with floor-mounted wood burner, school style radiator.

FITTED KITCHEN

The kitchen has a figure of eight configuration with two rooms being used with an open doorway between them. Twin front aspect windows overlooking the cottage gardens, side aspect window, exposed ceiling and wall beams, two ceiling light points in the kitchen area, range of floor and wall mounted cream units under a wood block effect works surface, one and a half bowl stainless steel sink unit with mixer tap over, integral Bosch hob with Neff oven below, space and plumbing for dishwasher, space and plumbing for washing machine, school style radiator, quarry tiled floor, door to side leading out to the gardens. In the second area of kitchen there are floor mounted, bespoke handbuilt duck egg blue cottage style units, under a solid wood work surface, slate tiled floor, school style radiator, space for tumble dryer, cottage style latched door to:

BATHROOM

Rear aspect window, white suite comprising of a corner bath with shower over, pedestal wash hand basin with mirror and light over, low level WC, towel rail, part tiled walls

LANDING

Accessed from the sitting room, splitting at a half landing to stairs to bedroom two and the main bedroom.

MAIN BEDROOM

Side aspect window, exposed ceiling and wall beams, ceiling light point, feature cast iron fireplace with a slate hearth, bespoke fitted wardrobes and storage with curtain fronts, school style radiator.

BEDROOM TWO

Rear aspect window overlooking the paddock, exposed wall beams, ceiling light point, original hatch through to main bedroom, bespoke built in laundry cupboard, school style radiator, latched door to:

BEDROOM THREE

Side aspect window overlooking the orchard, exposed wall beams, ceiling light point, school style radiator, eaves storage and hanging rail.

GARDENS

The property is accessed via a five bar wrought iron gate accessed from a track that passes over Malvern Hills Trust land which opens to a driveway, which leads to Humblebee Hall and Cider Mill Barn. To the left of the driveway is a Border Oak triple bay garage block with stone chip parking in front of and to the right hand side, and a further stone chip parking area suitable for three further opposite. There is plenty of space for a motorhome or horsebox if required. Immediately around the property and enclosed by a picket fence is a mature cottage style garden with a number of specimen fruit trees and a seating area accessed from the property to sit and enjoy the views across the gardens and paddock, contained within is a timber garden shed and original brick Privy now used as a garden store. The total plot extends to around two acres and is subdivided into a number of sections. The first being to the right of the driveway, a former mature orchard with gates to the rear which lead to an open paddock bordered with mature hedging and containing magnificent ancient Ash and with gated access from here into the second paddock. The second paddock has direct access to Malvern Hills Trust common land so is perfect for dog walking, or hacks. A single stable and tack room at the bottom of this paddock. To the south side of the property is a further paddock with a number of mature trees and a sitting spot at the top to enjoy the views over the land to the AONB beyond.

GARAGING

Triple bay border oak timber framed garage block with comprising of a double garage accessed via twin double wooden doors opening to an open double space and a single to the side. Power and light. concrete floor.

DIRECTIONS

POSTCODE - HR8 1ET. Situated on the A438 passing Eastnor Castle (RHS) continue along until you see the signpost Hollybush, 200 yards approx. on your left you will see a green triangular area, (what3words ///unveils.liquid.impulse) take a left here passing All Saints Church. Access to the property is via "common land", continue along the track you will see the farm opposite, take the immediate left turn and you will see a wrought iron gate leading to the property. For viewings we recommend you could park by All Saints Church where we will meet you and walk the track. Viewings are strictly by accompanied appointment via the agent, Allan Morris, Malvern on 01684 56411.

What3words - rocks.increased.chew

ADDITIONAL INFORMATION

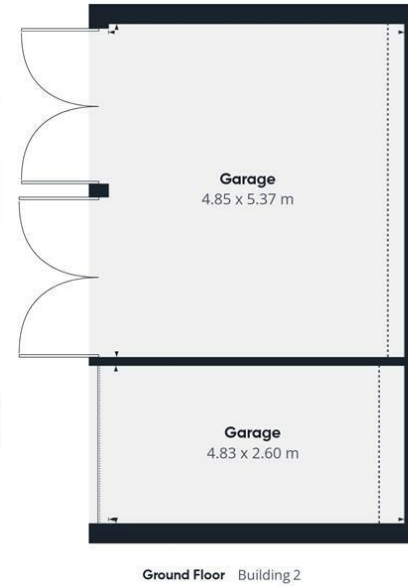
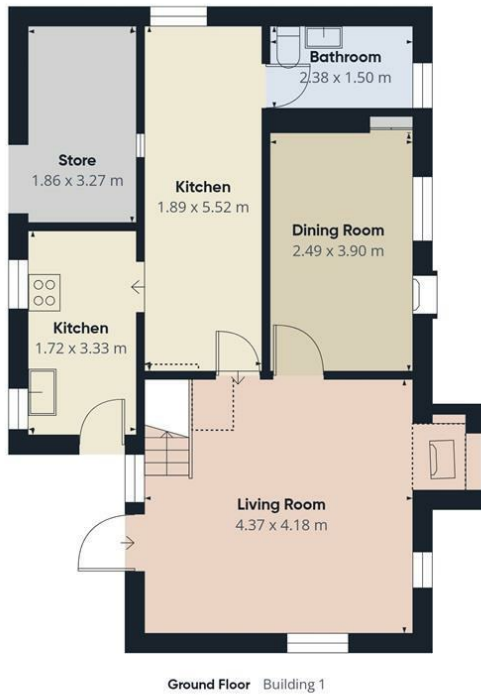
TENURE: We understand the property to be Freehold but this point should be confirmed by your solicitor. The property is Grade II Listed.

FIXTURES AND FITTINGS: Only those items referred to in these particulars are included in the sale price. Other items, such as carpets and curtains, may be available by separate arrangement
SERVICES: Mains electricity is connected. Private drainage. Water is private via a bore hole, shared with adjoining property. Oil fired central heating. Please note that we have not tested any services or appliances and their inclusion in these particulars should not be taken as a warranty.

OUTGOINGS: Local Council: Malvern Hills District Council (01684 862151); at the time of marketing the Council Tax Band is: D

MAKING AN OFFER: At the point of making an offer, intending purchasers will be required to produce two pieces of identification for each individual, as well as proof of how they intend to purchase the property. This is required to comply with the Money Laundering, Terrorist Financing and Transfer of Funds Regulations 2017. More information or guidance can be made available upon request.

ASKING PRICE - £650,000



Approximate total area⁽¹⁾
132.5 m²
Reduced headroom
7.2 m²

(1) Excluding balconies and terraces.

Reduced headroom
..... Below 1.5 m

Calculations reference the RICS IPMS 3C standard. Measurements are approximate and not to scale. This floor plan is intended for illustration only.

GIRAFFE360

EPC

Energy Efficiency Rating		Current	Potential
Very energy efficient - lower running costs			
(92 plus) A			
(81-91) B			
(69-80) C			
(55-68) D			
(39-54) E			
(21-38) F			
(1-20) G			
Not energy efficient - higher running costs			
England & Wales		EU Directive	2002/91/EC

Material Information Report

Allan Morris (and their Joint Agents where applicable) for themselves and for the vendors or lessors of this property for whom they act, give notice that:

- (i) These particulars are a general outline only, for the guidance of prospective purchasers or tenants, and do not constitute the whole or any part of an offer or contract;
- (ii) Allan Morris cannot guarantee the accuracy of any description, dimensions, reference to condition, necessary permission for use and occupation and other details contained herein and prospective purchasers or tenants must not rely on them as a statement of fact or representation and , must satisfy themselves as to their accuracy;
- (iii) No employee of Allan Morris (and their Joint Agents where applicable) has any authority to make or give any representation or warranty or enter into contract whatever in relation to the property;





