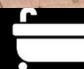

 4  2  1

Sword Hill, Caerphilly

£475,000

 peter
alan

02920 867611
caerphilly@peteralan.co.uk



About the property

This stunning executive residence, formerly the show home, offers an impressive blend of space, style, and high-end specification throughout, perfectly suited for modern family living.

Upon entering the property, you are welcomed into a beautifully presented interior. The ground floor boasts a spacious and contemporary open-plan kitchen and dining area, ideal for both everyday living and entertaining. This space is complemented by a separate family living room, offering a cosy yet elegant retreat. In addition, there is a versatile study which can be used as a home office, snug, or playroom, along with a convenient downstairs WC.

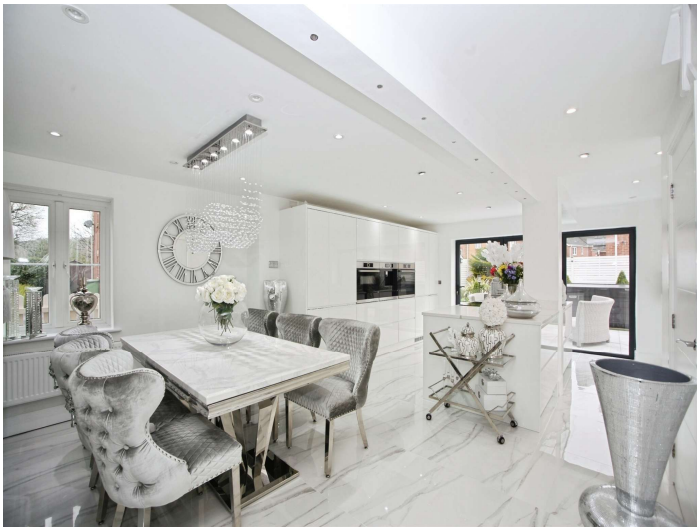
To the first floor, the property continues to impress with four generously sized bedrooms. The luxurious principal bedroom benefits from its own en-suite, while the remaining bedrooms are served by a stylish and well-appointed family bathroom.

Externally, the property enjoys a superb plot with open field views to the front. A driveway provides ample off-road parking and leads to a garage. The enclosed rear garden has been thoughtfully landscaped, featuring a porcelain patio and low-maintenance artificial lawn, creating a perfect space for outdoor relaxation and entertaining. Additional side and front garden areas further enhance the outdoor offering, with the property benefiting from full 360-degree access around the property.

Situated within the highly desirable Castle Maen development in Caerphilly, the home is conveniently located close to a range of local amenities, including shops, schools, and transport links.

Finished to an exceptional standard throughout, this remarkable home truly stands out and must be viewed to be fully appreciated.



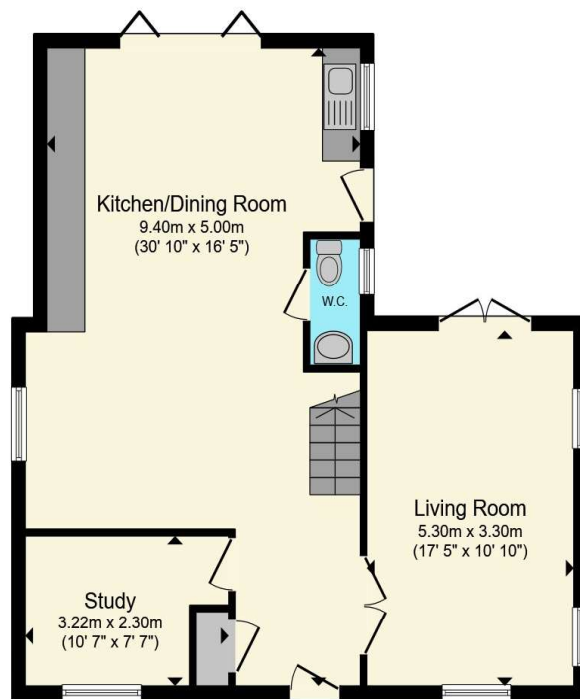




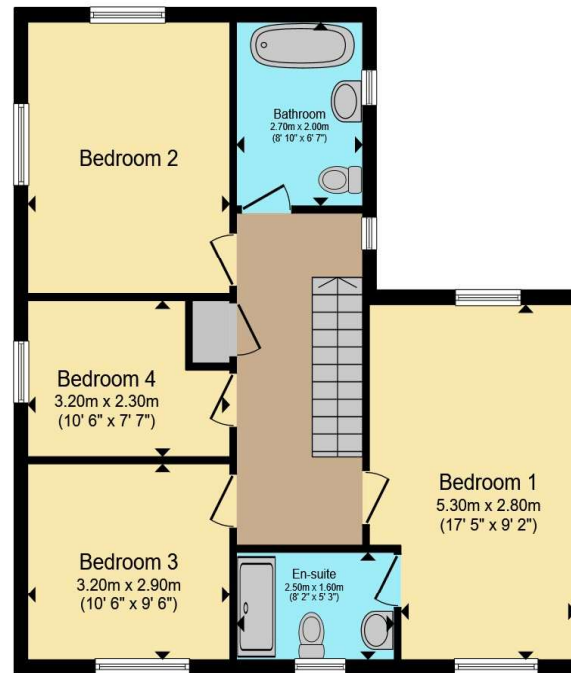


02920 867611

caerphilly@peteralan.co.uk



Ground Floor



First Floor

Total floor area 133.5 m² (1,438 sq.ft.) approx

This floor plan is for illustrative purposes only. It is not drawn to scale. Any measurements, floor areas (including any total floor area), openings and orientation are approximate. No details are guaranteed, they cannot be relied upon for any purpose and they do not form part of any agreement. No liability is taken for any error, omission or misstatement. A party must rely upon its own inspection(s). Powered by www.propertybox.io



Important Information

Note while we endeavour to make our sales details accurate and reliable, if there is any point which is of particular interest to you, please contact the office and we will be pleased to confirm the position for you. We have not personally tested any apparatus, equipment, fixtures, fittings or services and cannot verify they are in working order or fit for their purposes. Nothing in these particulars is intended to indicate that carpets or curtains, furnishings or fittings, electrical goods (whether wired or not), Gas fires or light fittings or any other fixtures not expressly included form part of the property offered for sale. This computer generated Floorplan, if applicable, is intended as a general guide to the layout and design of the property. It is not to scale and should not be relied upon for dimensions. Tenure: We cannot confirm the tenure of the property as we have not had access to the legal documents. The buyer is advised to obtain verification from their solicitor or surveyor.

Peter Alan Limited is registered in England and Wales under company number 2073153, Registered Office is Cumbria House, 16-20 Hockliffe Street, Leighton Buzzard, Bedfordshire, LU7 1GN. VAT Registration Number is 500 2481 05. For activities relating to regulated mortgages and non-investment insurance contracts, Peter Alan Limited is an appointed representative of Connells Limited which is authorised and regulated by the Financial Conduct Authority. Connells Limited's Financial Services Register number is 302221. Most buy-to-let mortgages are not regulated.

