

Scott House, Battersea Power Station

Asking Price £725,000

An exceptional one bedroom apartment available in the exciting and iconic Battersea Power Station development. This stunning apartment comprises of an open plan kitchen/ reception room, a bright and spacious double bedroom, a luxurious bathroom finished to a high standard and a winter garden.

In an aim to offer the epitome of city living the development boasts a selection of vibrant shops, restaurants and leisure spaces all on the doorstep of its residents. Scott House is located in the West phase of the complex ideally situated for the River Thames, Chelsea, Battersea Park and local tube and rail stations.

Approx. 986 years remaining on lease
Ground rent amount: Ask Agent
Ground rent review period: Ask Agent
Service charge amount: approx. Ask Agent
Service charge review period: N/A
Council tax band: E (Wandsworth Council)

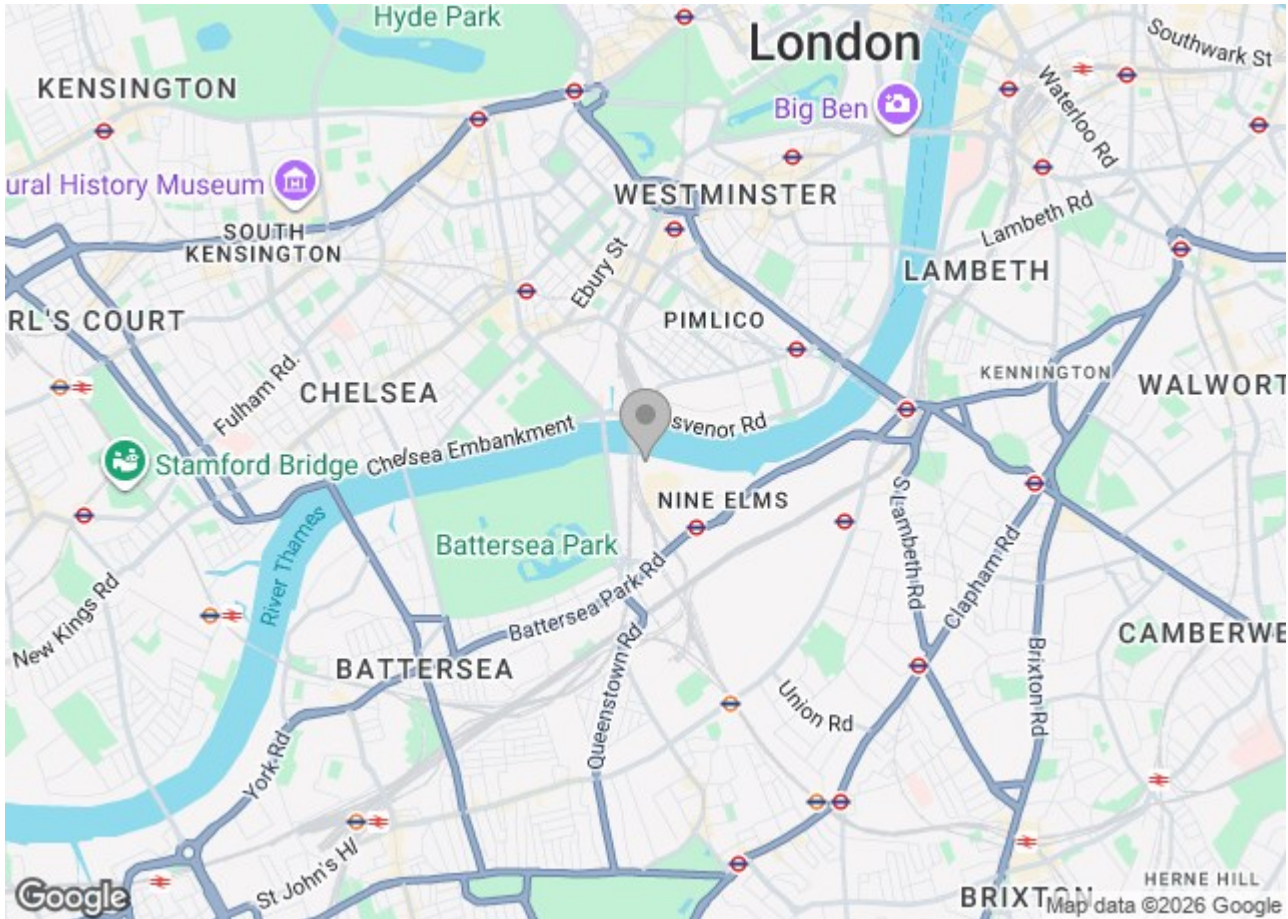
Electricity supply – Mains | Heating & Cooling – Communal | Water supply – Mains | Sewerage – Mains | Internet: Fibre
| Lift Access | Cladding: EWS1 Certificate available

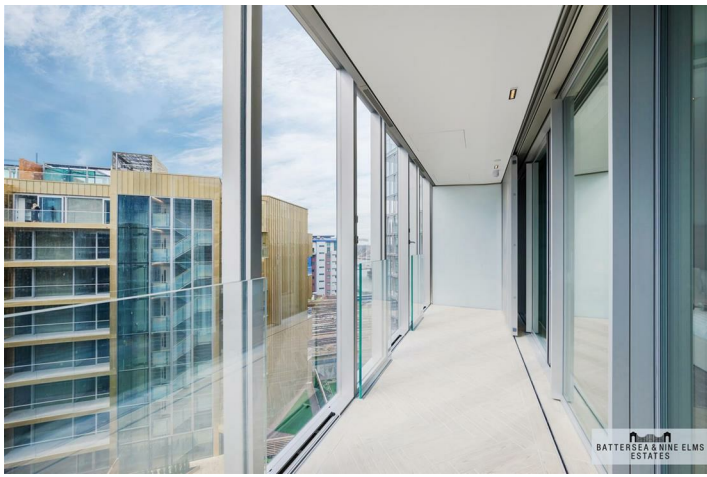
To check broadband and mobile phone coverage please visit Ofcom
To check planning permission please visit Wandsworth Council Website, Planning & Building Control

23 Circus Road West London



- One double bedroom
- One bathroom
- Fully integrated appliances
- 24 Hour concierge
- Residents lounge & bar
- Gym & Swimming pool





BATTERSEA & NINE ELMS
ESTATES



BATTERSEA & NINE ELMS
ESTATES



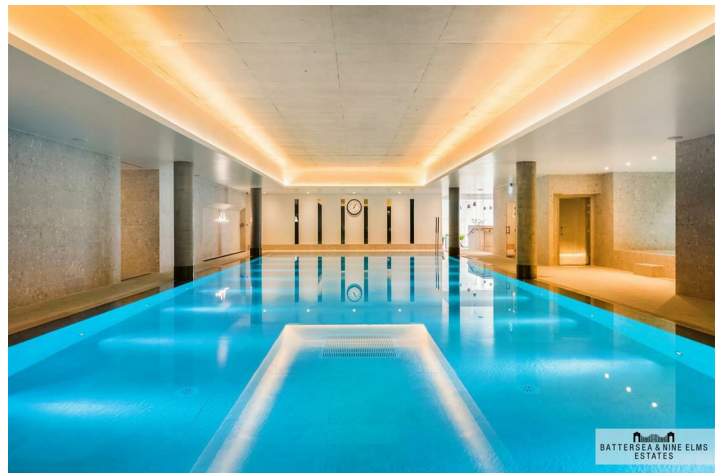
BATTERSEA & NINE ELMS
ESTATES



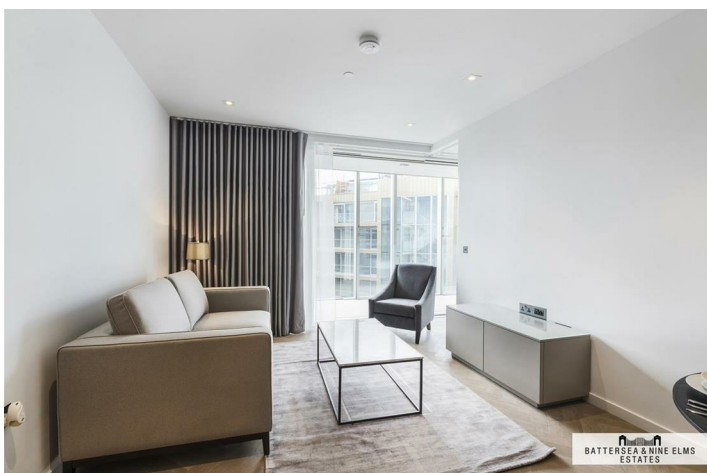
BATTERSEA & NINE ELMS
ESTATES



BATTERSEA & NINE ELMS
ESTATES



BATTERSEA & NINE ELMS
ESTATES

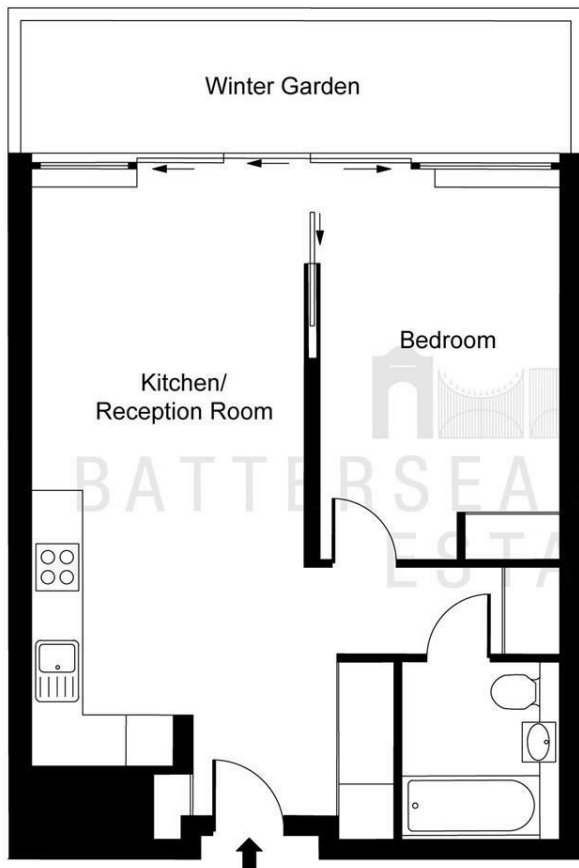


BATTERSEA & NINE ELMS
ESTATES



BATTERSEA & NINE ELMS
ESTATES

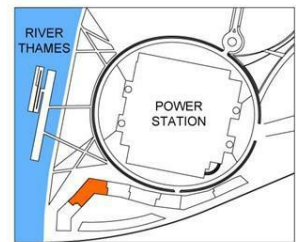
Floor Plan



Scott House, Battersea Power Station, SW8

Approximate Gross Internal Area
54.40 sq m / 586 sq ft

Winter Garden
10.70 sq m / 115 sq ft



This plan is not to scale. It is for guidance and not for valuation purposes.
All measurements and areas are approximate only, and have been prepared in accordance with the current edition of the RICS Code of Measuring Practice.
© Fulham Performance

These particulars, whilst believed to be accurate are set out as a general outline only for guidance and do not constitute any part of an offer or contract. Intending purchasers should not rely on them as statements of representation of fact, but must satisfy themselves by inspection or otherwise as to their accuracy. No person in this firm's employment has the authority to make or give any representation or warranty in respect of the property.

