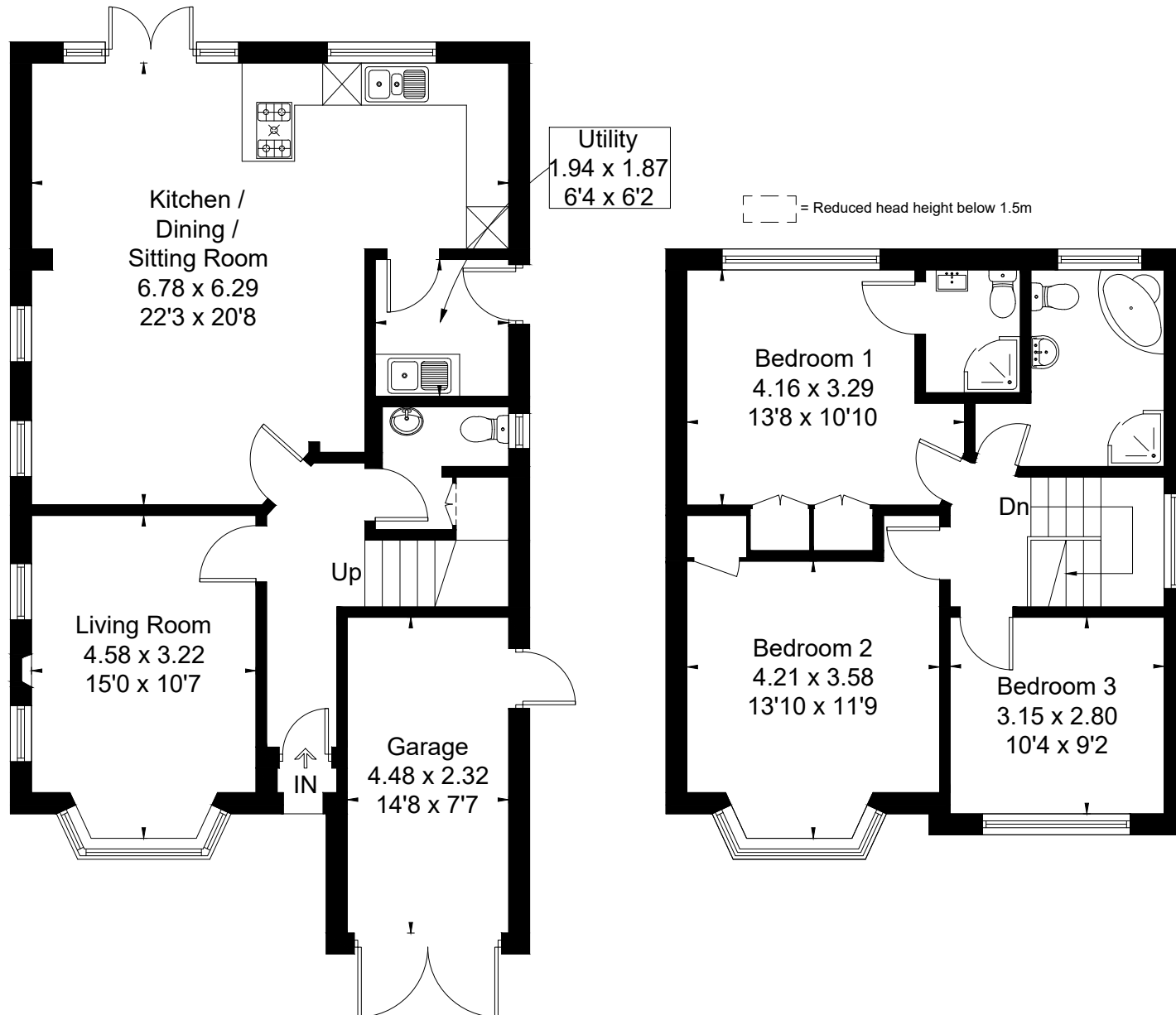


Approximate Floor Area = 117.7 sq m / 1267 sq ft

Garage = 10.6 sq m / 114 sq ft

Total = 128.3 sq m / 1381 sq ft



This floor plan has been drawn in accordance with RICS Property Measurement 2nd edition.

All measurements, including the floor area, are approximate and for illustrative purposes only. @fourwalls-group.com #110860