



17 Cartmel Drive
Corby, NN18 8TA



Simpson West

Boasting a highly attractive position on a private cul-de-sac which can be found within the much sought after Oakley Vale area, is this rarely available detached residence which is presented in excellent condition throughout. Features and accommodation include a reception hall, cloakroom/WC, utility room, living room and a superb kitchen/dining room which offers a range of integrated appliances. The first floor provides four double bedrooms with the master benefitting from a en-suite and fitted wardrobes. There is also a family bathroom. Outside, an attractive frontage enjoys a driveway providing off road parking which leads to the integral garage. The rear garden has been thoughtfully landscaped to offer seating and a large lawned area. An early visit to the property is considered essential! Energy Rating B. Council Tax Band D.

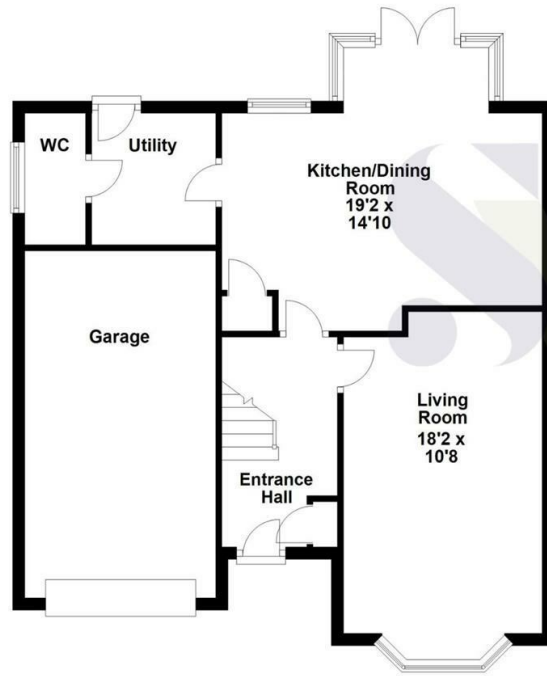


£350,000

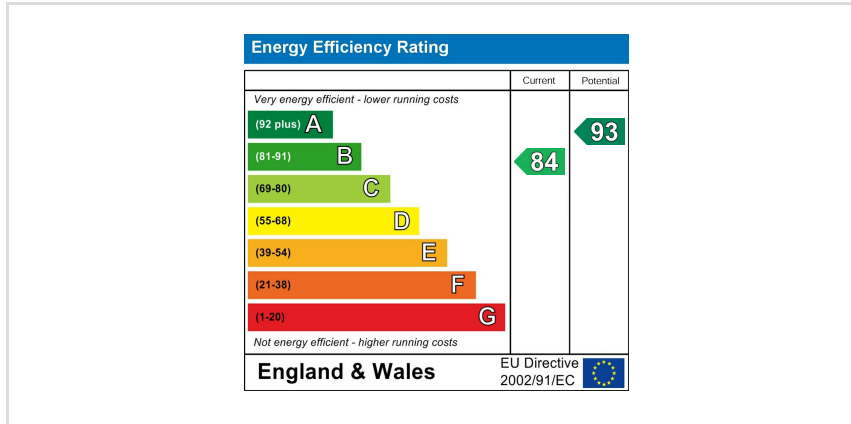
4 2 1



Ground Floor



First Floor



When you buy with Simpson West, you know **you'll be in safe hands**. From the moment you walk through our doors, we'll make you **feel truly welcome**. Our sales consultants and financial advisors will take you through **every step of the process**, offering **free expert advice** along the way, from help choosing the right mortgage and insurance through to finding your conveyancer. And if you need help selling your home too, **with over 20 years of local experience, you can trust us to get you moving**.



**Simpson
West**

Making Every
Journey Personal



01536 202007

info@simpsonwest.co.uk

<https://www.simpsonwest.co.uk/>

64 Corporation Street, Corby, Northants, NN17 1NH