



Connells

Virginia Avenue
Stafford



Property Description

CONNELLS ESTATE AGENTS are pleased to market for sale this three bedroom semi-detached family home situated on the popular Meadowcroft Park estate. The property is within easy access of the town centre of Stafford, boasting various amenities including a mainline intercity railway station with some Virgin services operating to London Euston in approximately one hour, twenty minutes. Junctions 13 and 14 of the M6 provide direct access into the national motorway network and M6 Toll.

The property is well presented throughout and briefly comprises of an Entrance Hallway, Kitchen and Lounge/Diner all located on the ground floor, with stairs leading to First Floor Landing, Master Bedroom with adjoining En-Suite, a Further Two Bedrooms and Family Bathroom.

Externally to the front there is a private driveway and access to garage via up and over door. The rear garden boasts a paved patio seating area, lawn with decorative borders and a storage shed.

Internally

Entrance Hallway

Having front door access and doors into;

Kitchen

Having double glazed window to front, this modern fitted kitchen offers a range of wall and base units incorporating laminate work surfaces over, sink and drainer, oven with gas hob and cooker hood, tiled splashback, space for appliances and tiled flooring.

Lounge/Diner

Having double glazed window to rear and patio doors to rear, radiator and wood flooring.

First Floor Landing

Having stairs leading from Lounge/Diner and doors into;

Bedroom One

Having double glazed window to front, radiator and carpet flooring.

En-Suite

Having W.C, wash hand basin and walk in shower.

Bedroom Two

Having double glazed window to rear, fitted wardrobes, radiator and carpet flooring.

Bedroom Three

Having double glazed window to rear, radiator and carpet flooring.

Bathroom

Having W.C, wash hand basin, bath with shower overhead, fully tiled walls and flooring.

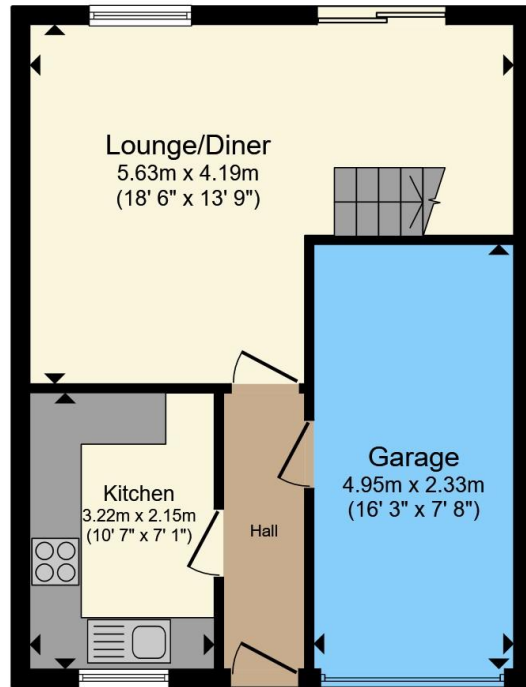
Externally

Externally to the front there is a private driveway and access to garage via up and over door. The rear garden boasts a paved patio seating area, lawn with decorative borders and a storage shed.

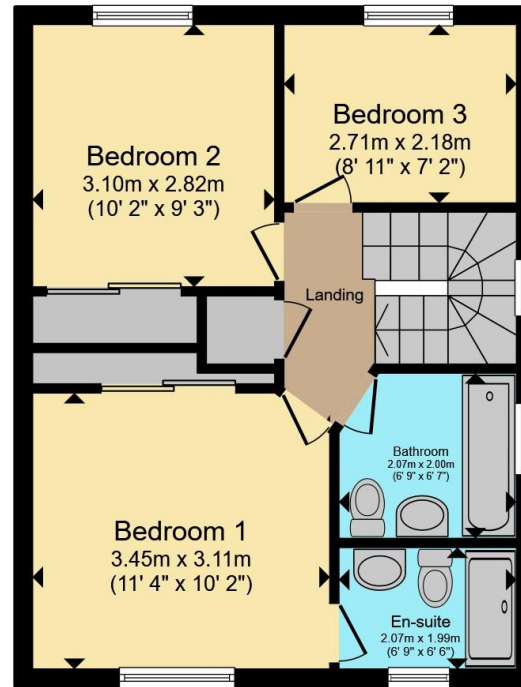








Ground Floor



First Floor

Total floor area 84.6 m² (910 sq.ft.) approx

This floor plan is for illustrative purposes only. It is not drawn to scale. Any measurements, floor areas (including any total floor area), openings and orientation are approximate. No details are guaranteed, they cannot be relied upon for any purpose and they do not form part of any agreement. No liability is taken for any error, omission or misstatement. A party must rely upon its own inspection(s). Powered by www.propertybox.io



To view this property please contact Connells on

T 01785 243356
E stafford@connells.co.uk

Unit 3C, Salter Street
 STAFFORD ST16 2JU

EPC Rating: C Council Tax Band: C

Tenure: Freehold

view this property online connells.co.uk/Property/STD107843



1. MONEY LAUNDERING REGULATIONS Intending purchasers will be asked to produce identification documentation at a later stage and we would ask for your co-operation in order that there will be no delay in agreeing the sale. 2. These particulars do not constitute part or all of an offer or contract. 3. The measurements indicated are supplied for guidance only and as such must be considered incorrect. Potential buyers are advised to recheck measurements before committing to any expense. 4. We have not tested any apparatus, equipment, fixtures, fittings or services and it is in the buyers interest to check the working condition of any appliances.

Connells Residential is registered in England and Wales under company number 1489613, Registered Office is Cumbria House, 16-20 Hockliffe Street, Leighton Buzzard, Bedfordshire, LU7 1GN. VAT Registration Number is 500 2481 05.

See all our properties at www.connells.co.uk | www.rightmove.co.uk | www.zoopla.co.uk

Property Ref: STD107843 - 0002