



**Connells**

Franklin Fields  
Corby



## Property Description

This chain-free two-bedroom semi-detached home offers a spacious and practical layout ideal for first-time buyers, downsizers or investors.

The ground floor features a welcoming hallway leading into a bright and generously sized lounge, perfect for relaxation and entertaining. The kitchen sits to the rear of the property with access to a useful shower room and a porch that opens directly onto the garden.

Upstairs, the property offers two well-proportioned bedrooms and a central landing area, providing comfortable living space for a variety of needs.

Externally, the home benefits from a gated driveway, offering secure off-road parking, and a private rear garden ideal for outdoor dining, gardening or simply enjoying the warmer months.

With its spacious rooms, practical layout and chain-free status, this property represents an excellent opportunity in a convenient location.

## Ground Floor

### Porch

External doors to the front and rear, door leading to the kitchen.

### Kitchen

Window to the side, a range of wall and base units with rolled edge work surface, sink drainer with mixer tap, integrated oven and hob, space for appliances, tiled splash backs, vinyl flooring, radiator.

### Shower Room

Window to the rear, walk in shower cubicle, wash hand basin, low level WC, radiator, tiled floor and splash backs.

### Lounge

Window to the front, patio doors to the rear, feature fire place, carpet flooring, radiator.

### Hall

Stairs leading to the first floor, under stairs storage cupboard.

## First Floor

### Landing

### Bedroom One

Windows to the front and rear, carpet flooring, radiator.

### Bedroom Two

Window to the side, carpet flooring, radiator.

## Externally

### To The Front

Gated access to driveway, gravel, pedestrian path to entrance.

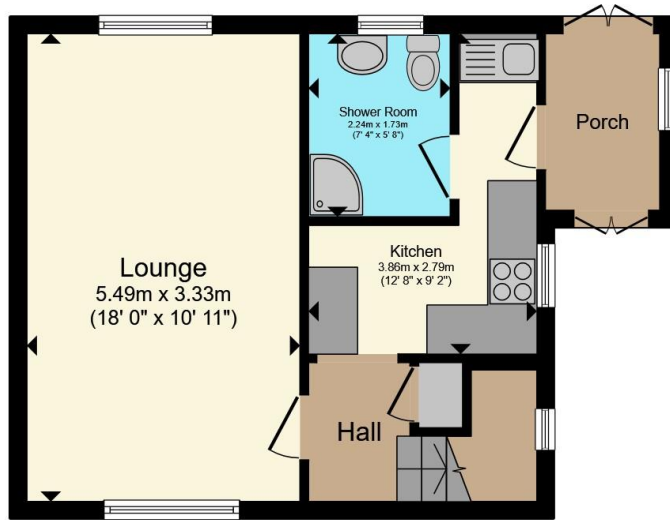
### Rear Garden

Laid to lawn, gravel pathway, established shrubbery.

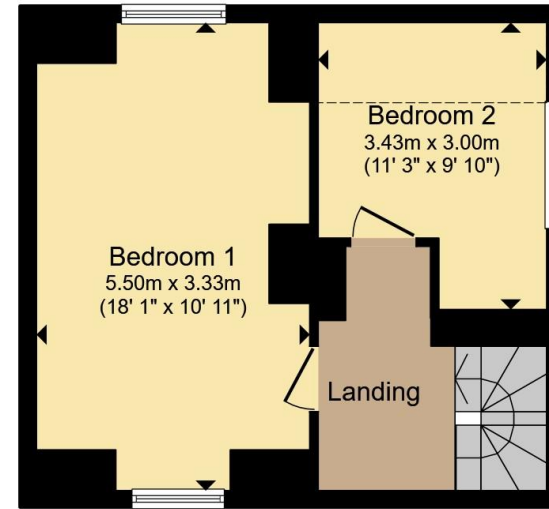








**Ground Floor**



**First Floor**

Total floor area 74.1 m<sup>2</sup> (798 sq.ft.) approx

This floor plan is for illustrative purposes only. It is not drawn to scale. Any measurements, floor areas (including any total floor area), openings and orientation are approximate. No details are guaranteed, they cannot be relied upon for any purpose and they do not form part of any agreement. No liability is taken for any error, omission or misstatement. A party must rely upon its own inspection(s). Powered by [www.propertybox.io](http://www.propertybox.io)



To view this property please contact Connells on

**T 01536 747320**  
**E [oakleyvale@connells.co.uk](mailto:oakleyvale@connells.co.uk)**

10 Charter Court Butland Road Oakley Vale  
 CORBY NN18 8QT

EPC Rating: D Council Tax  
 Band: A

Tenure: Freehold

**view this property online [connells.co.uk/Property/OKV307750](http://connells.co.uk/Property/OKV307750)**



1. MONEY LAUNDERING REGULATIONS Intending purchasers will be asked to produce identification documentation at a later stage and we would ask for your co-operation in order that there will be no delay in agreeing the sale. 2. These particulars do not constitute part or all of an offer or contract. 3. The measurements indicated are supplied for guidance only and as such must be considered incorrect. Potential buyers are advised to recheck measurements before committing to any expense. 4. We have not tested any apparatus, equipment, fixtures, fittings or services and it is in the buyers interest to check the working condition of any appliances.

Connells Residential is registered in England and Wales under company number 1489613, Registered Office is Cumbria House, 16-20 Hockliffe Street, Leighton Buzzard, Bedfordshire, LU7 1GN. VAT Registration Number is 500 2481 05.

**See all our properties at [www.connells.co.uk](http://www.connells.co.uk) | [www.rightmove.co.uk](http://www.rightmove.co.uk) | [www.zoopla.co.uk](http://www.zoopla.co.uk)**

Property Ref: OKV307750 - 0003