



Daleham Gardens NW3

Parkheath
Sold on Service





Daleham Gardens, NW3

Asking Price £850,000

Share of Freehold

- A bright and well proportioned 2 double bedroom, 2 bathroom apartment
- Set in imposing semi-detached red brick conversion
- Well tended communal Gardens
- Entire 2nd (top) floor - 809 sq ft approx
- 2 double bedrooms and 2 bathrooms
- A generous 18' reception with wood flooring
- 15' main bedroom with built-in wardrobes plus 12' second bedroom with en suite shower room
- Separate 14ft kitchen with window
- Share of freehold
- Located between Hampstead and Belsize Park and Ideal for Belsize Village and Swiss Cottage

Belsize Park/Hampstead
 208 Haverstock Hill
 NW3 2AG
 Sales 020 7431 1234
 Lettings 020 7431 3104
nw3@parkheath.com

South/West Hampstead
 192 West End Lane
 NW6 1SG
 Sales & Lettings
 Tel 020 7794 7111
192@parkheath.com

Property Management
 192 West End Lane
 NW6 1SG
 020 7433 6174
pm@parkheath.com

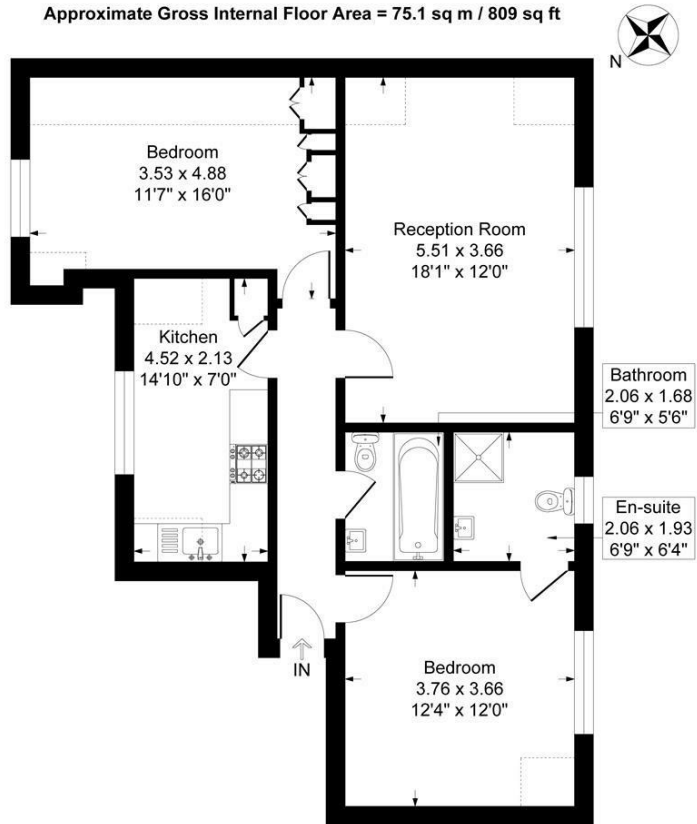
www.parkheath.com

Parkheath
Sold on Service

Camden Tax band E

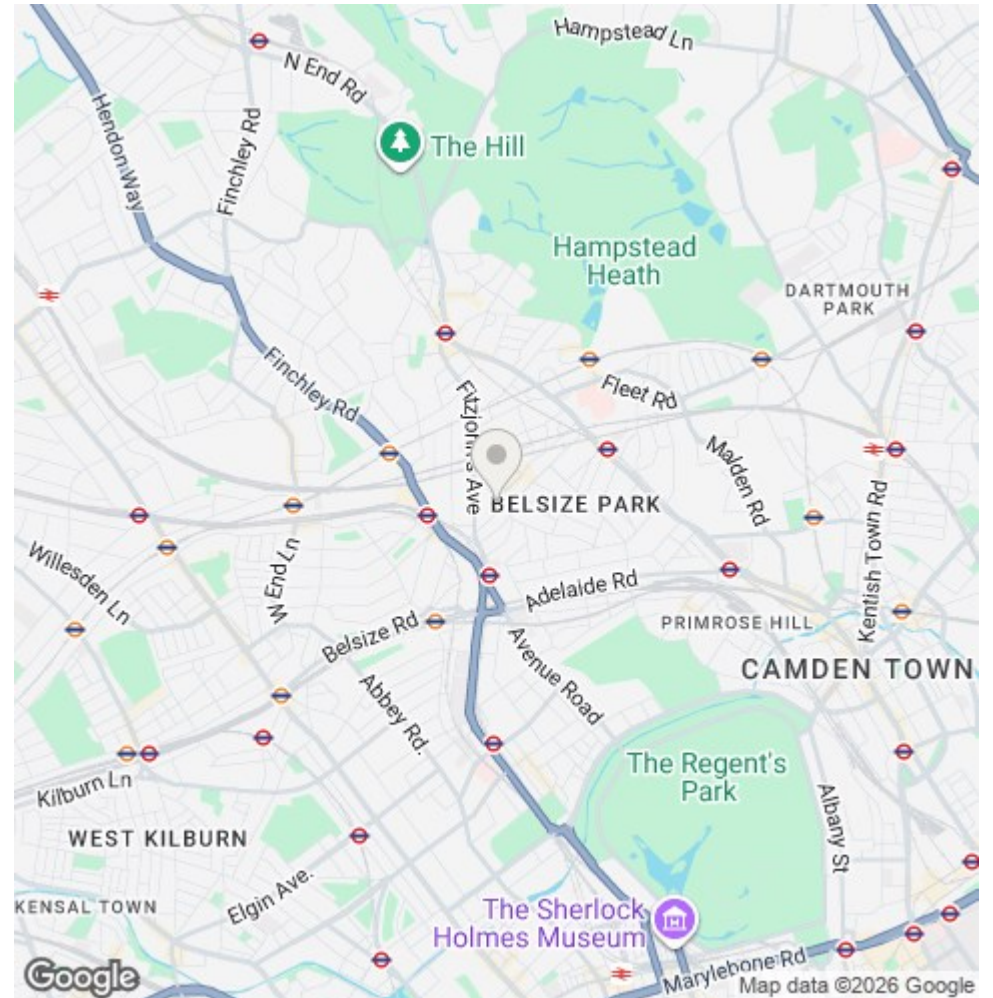
Daleham Gardens, London, NW3 5BY

Approximate Gross Internal Floor Area = 75.1 sq m / 809 sq ft



Second Floor

Illustration for identification purposes only, measurements are approximate, not to scale.



The particulars do not constitute part of an offer or contract. The particulars, including text, photographs and plans, are for the guidance only of prospective purchasers/tenants and must not be relied upon as statements of fact. The descriptions provided therein represent the opinion of the author and whilst given in good faith should not be construed as statements of fact. Nothing in these particulars shall be deemed a statement that the property is in good condition or otherwise or that any services or facilities are in good working order. All measurements are approximate