

Alma Terrace, Gunnislake, PL18

Guide Price £150,000

2 1 1



A charming two-bedroom extended cottage set within the popular village of Gunnislake, enjoying stunning views across the Tamar Valley. The property benefits from a generous garden and is offered with no onward chain.

The property is situated in the village of Gunnislake, within easy reach of the neighbouring villages of St Ann's Chapel and Drakewalls. Local amenities include a convenience store, post office, doctor's surgery, primary school, public houses, and a train station with regular services to and from Plymouth. The surrounding area offers a wealth of scenic countryside walks, with Cotehele House and Estate, Kit Hill and the River Tamar all close by.

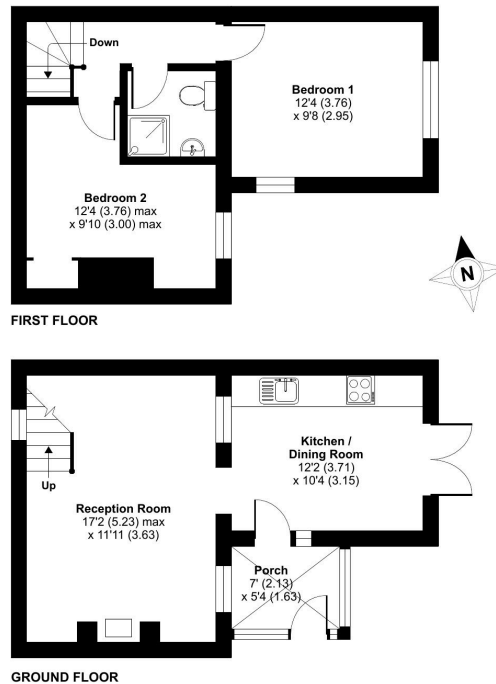
Key Features

- TO ARRANGE A VIEWING PLEASE QUOTE BL0650
- Two Double Bedrooms
- Stunning Views Over Tamar Valley
- Reception Room
- Popular Village Location
- Charming & Extended Cottage
- No Onward Chain
- Good-Sized Garden
- Kitchen/Dining Room
- Freehold

Alma Terrace, Gunnislake, PL18

Approximate Area = 734 sq ft / 68.1 sq m

For identification only - Not to scale



Floor plan produced in accordance with RICS Property Measurement Standards incorporating International Property Measurement Standards (IPMS2 Residential). ©richcom 2026. Produced for Ben Estates TA Ben Langton Powered By exp. REF: 1414874