



Lyndale, NW2

£425,000

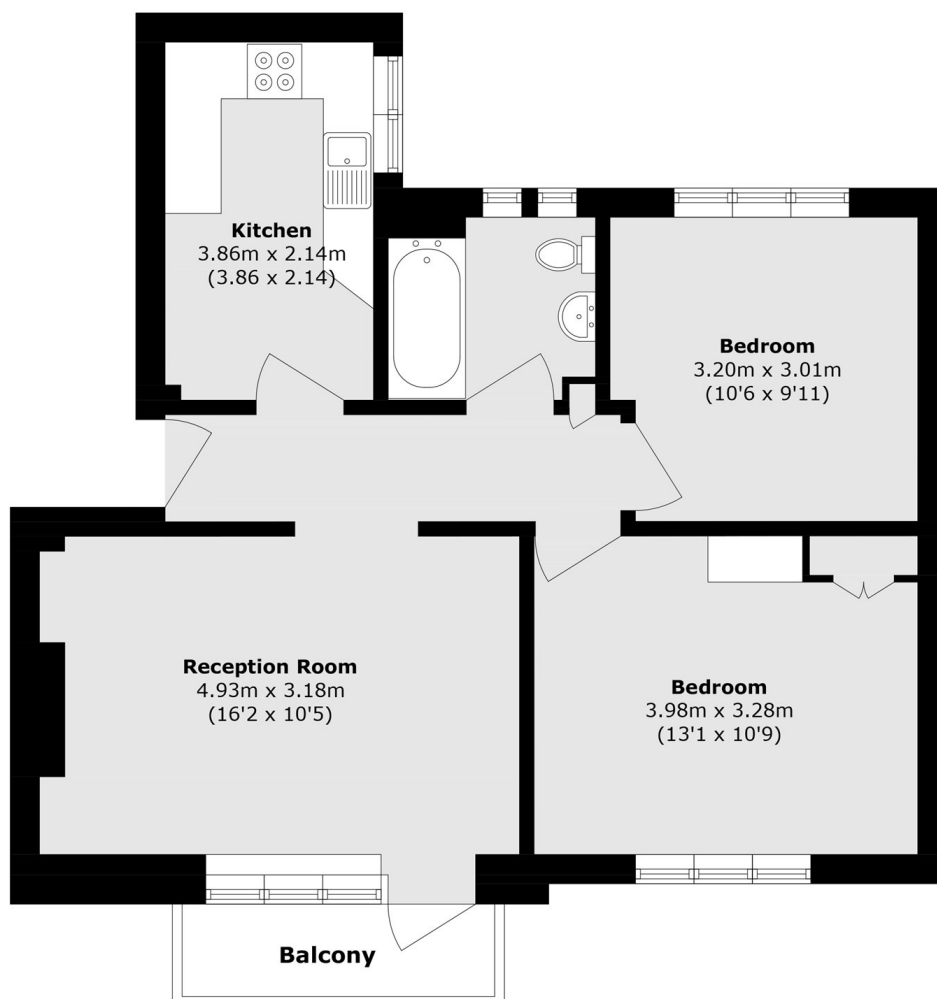
This two bedroom flat has a private balcony and is located on the top floor of this purpose built block. The property benefits from communal gardens and it will be sold with no onward chain.

The property is well placed for access to Finchley Road and Golders Green with their multiple shopping and restaurant facilities. Hampstead Heath and Brent Cross shopping centre are also nearby.

Features

- Two Double Beds
- Private Balcony
- Top Floor
- Separate Kitchen
- Purpose Built
- No Onward Chain

Lyndale, London, NW2



Total area (approx.): 59.7 sq. m (642.6 sq. ft)

Balcony area (approx.): 3.0 sq. m (32.2 sq. ft)