



83 Firs Road, Firsdwn, Nr Salisbury, Wiltshire, SP5 1SW

£400,000 Freehold

About The Property

The property is a detached three bedroom bungalow in need of moderate updating and offered to the market with vacant possession.

The well arranged accommodation comprises an entrance porch leading to an entrance hallway which has a storage cupboard and a loft access.

The sitting room has French doors leading to a large conservatory extension, which again has French doors leading on to the rear garden. The kitchen has a range of units with an integrated oven and hob and space for the usual appliances. There is also a dining area which could alternatively be used as a study.

There are three double bedrooms which all have fitted wardrobes and there is a large bathroom which has a white four piece suite. Benefits include oil central heating, PVCu double glazing and exposed floorboards throughout the majority of the property.

To the front there is a driveway proving both off road parking and turning areas and a grassed garden area. There is a detached garage (6.61m x 2.61m) with an up and over door and a side door leading in to a paved and enclosed area. There is an oil tank and an outside boiler and the rear garden enjoys a private aspect and is lawned with a timber fenced boundary. A useful brick shed and outside tap lie to the side of the bungalow.

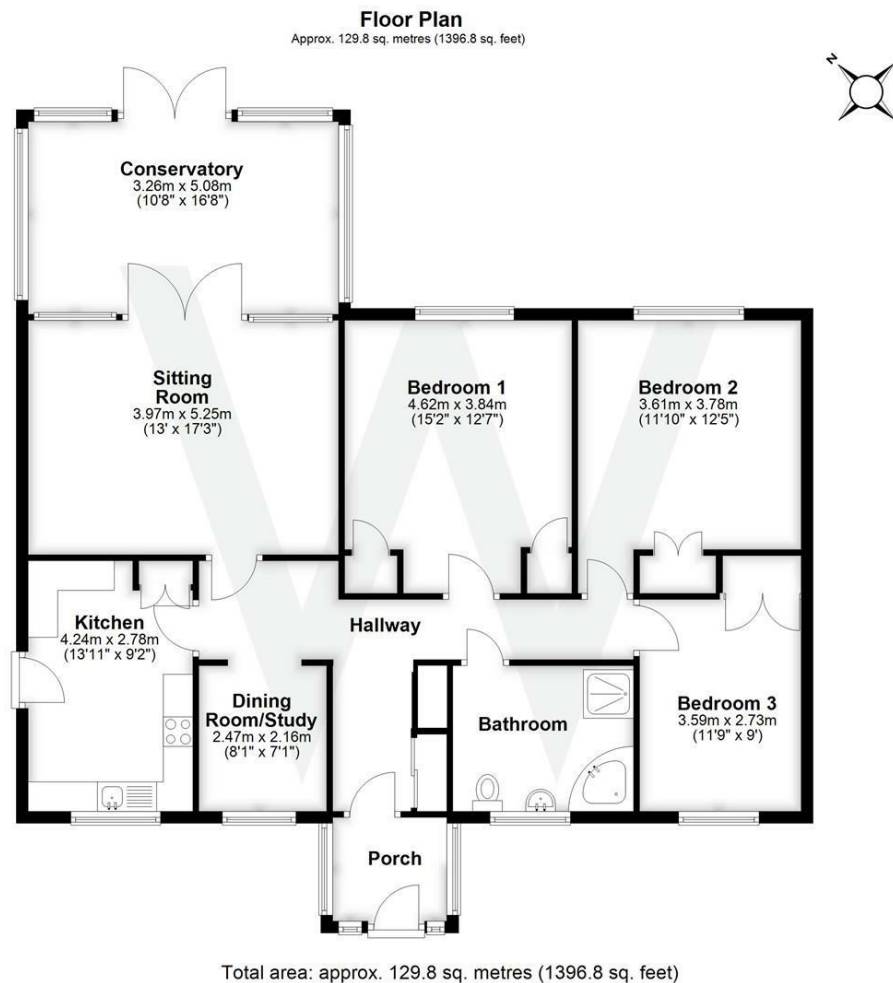
Firs Road is in Firsdown which lies close by to the popular village of Winterslow and approximately 4 miles north-east of the city of Salisbury which offers an excellent range of amenities. Winterslow itself offers a village shop and post office, primary school and doctor's surgery.



- Detached bungalow - no chain
- Three bedrooms
- Sitting room
- Kitchen
- Dining area/study
- Conservatory
- Bathroom with four piece suite
- PVCu DG & Oil CH
- Garage and parking
- Gardens







Further Information

Local authority: Wiltshire Council

Council Tax: E - £2849.73 (2025/2026)

Tenure: Freehold

Services: Mains electricity and water. Private drainage.

Heating: Oil heating with radiators

Directions: Leave Salisbury on the A30 London Road and after approximately 3 miles turn right signposted to Firsdown. Continue along Firs Road and the property can be found on the right hand side.

What3words: ///fabricate.chum.aquatics

Energy Efficiency Rating		
	Current	Potential
Very energy efficient - lower running costs		
(92-plus) A		
(81-91) B		
(69-80) C		76
(55-68) D	62	
(39-54) E		
(21-38) F		
(1-20) G		
Not energy efficient - higher running costs		
England & Wales	EU Directive 2002/91/EC	