



HARVEY ROBINSON

Guide Price

£325,000

Oak Crescent

Biggleswade, SG18 8JS



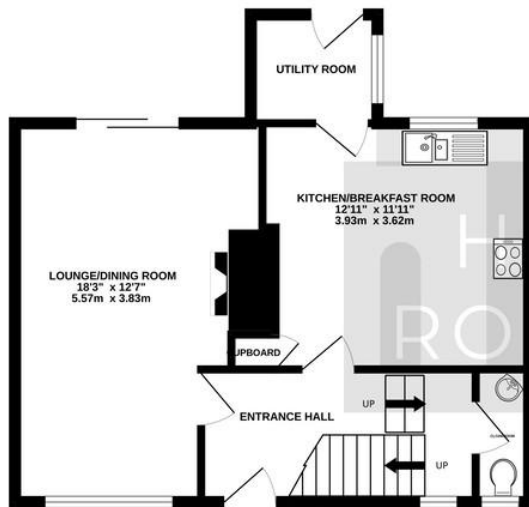
We are delighted to offer for sale this mature three-bedroom mid-terrace family home, ideally positioned within this popular central part of Biggleswade. The property is presented in good condition throughout and, while it may benefit from some light modernisation, it already provides well-proportioned accommodation. In brief, the ground floor comprises an entrance hall, cloakroom, a generous dual-aspect lounge/dining room, a kitchen/breakfast room, and a useful utility room. Upstairs offers three bedrooms – with fitted furniture to bedroom one and wardrobes to bedroom two – along with a shower room completing the first-floor accommodation. Outside, the home enjoys a mature enclosed rear garden with paved patio areas, established flower beds stocked with a variety of shrubs, trees, and plants, plus a brick-built shed. To the front, the garden is mainly laid to gravel with flower bed borders and benefits from off-road parking for one vehicle.



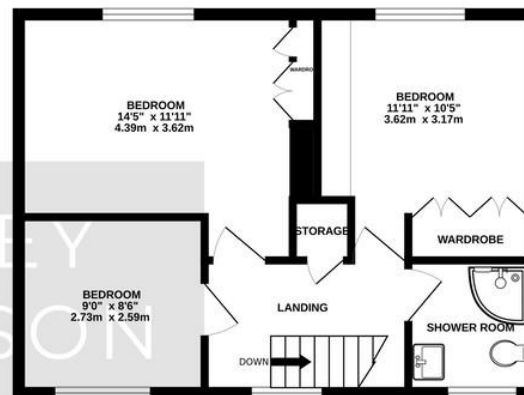




GROUND FLOOR  
473 sq.ft. (44.0 sq.m.) approx.



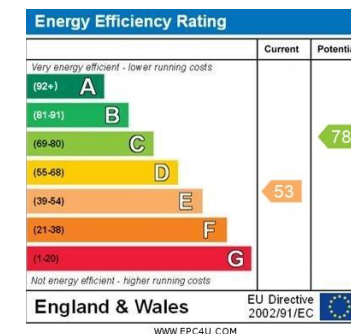
1ST FLOOR  
450 sq.ft. (41.8 sq.m.) approx.



TOTAL FLOOR AREA : 923 sq.ft. (85.8 sq.m.) approx.  
Made with Metropix ©2025

## FAQs

Property Tenure: Freehold  
Property Built: 1963  
Council Tax Band: B  
Rear Garden Aspect: North  
Water Meter: Yes  
EPC Rating: E  
What3Words Location:  
///pulsps.showcases.sped



Agents Note: Whilst every care has been taken to prepare these particulars, they are for guidance purposes only. All measurements are approximate and are for general guidance purposes only and whilst every care has been taken to ensure their accuracy, they should not be relied upon and potential buyers/tenants are advised to recheck the measurements

HARVEY ROBINSON

### OFFICE ADDRESS

5 Purcell Place, Sullivan Court,  
Biggleswade, Bedfordshire,  
SG18 8SX

### CONTACT

01767 660770  
biggleswade@harveyrobinson.co.uk  
www.harveyrobinson.co.uk