



 paulwallace

Yukon Road, Turnford, EN10 6FP |
Offers in the Region Of £229,995 | Leasehold

Yukon Road, Turnford, EN10 6FP

****NO CHAIN**** A bright and SPACIOUS TWO BEDROOM second floor flat in the popular CANADA FIELDS DEVELOPMENT in TURNFORD. Features include a good sized MAIN BEDROOM with EN-SUITE SHOWER, family bathroom, SPACIOUS LOUNGE/DINER with Juliette balcony, separate kitchen, private parking space, 104 YEAR LEASE and (vendor advises) SERVICE CHARGE 140 pcm with GROUND RENT 150 pa.

Key features

- Chain Free
- Two Bedrooms
- Large Lounge/Diner
- Parking Space
- 104 Year Lease
- Two Bathrooms
- Separate Kitchen
- Service Charge £140 pcm

Property Information

Tenure

Leasehold

Council Tax

C

EPC Rating

C

Local Authority

Broxbourne Borough Council

Lease Length

104 Years

Annual Service Charge & Ground Rent

GR - £150

SC - £1,680



Paul Wallace Estate Agents
Brookfield Centre
Cheshunt
Hertfordshire
EN8 0NN

01992 781100

cheshunt@paulwallace.co.uk

www.paulwallace.co.uk

Opening Times

| | |
|-----------|-----------------|
| Mon - Fri | 9 am to 6:30 pm |
| Sat | 9 am to 5:30 pm |
| Sun | Closed |
| Bank Hols | Closed |

paulwallace
estate agents

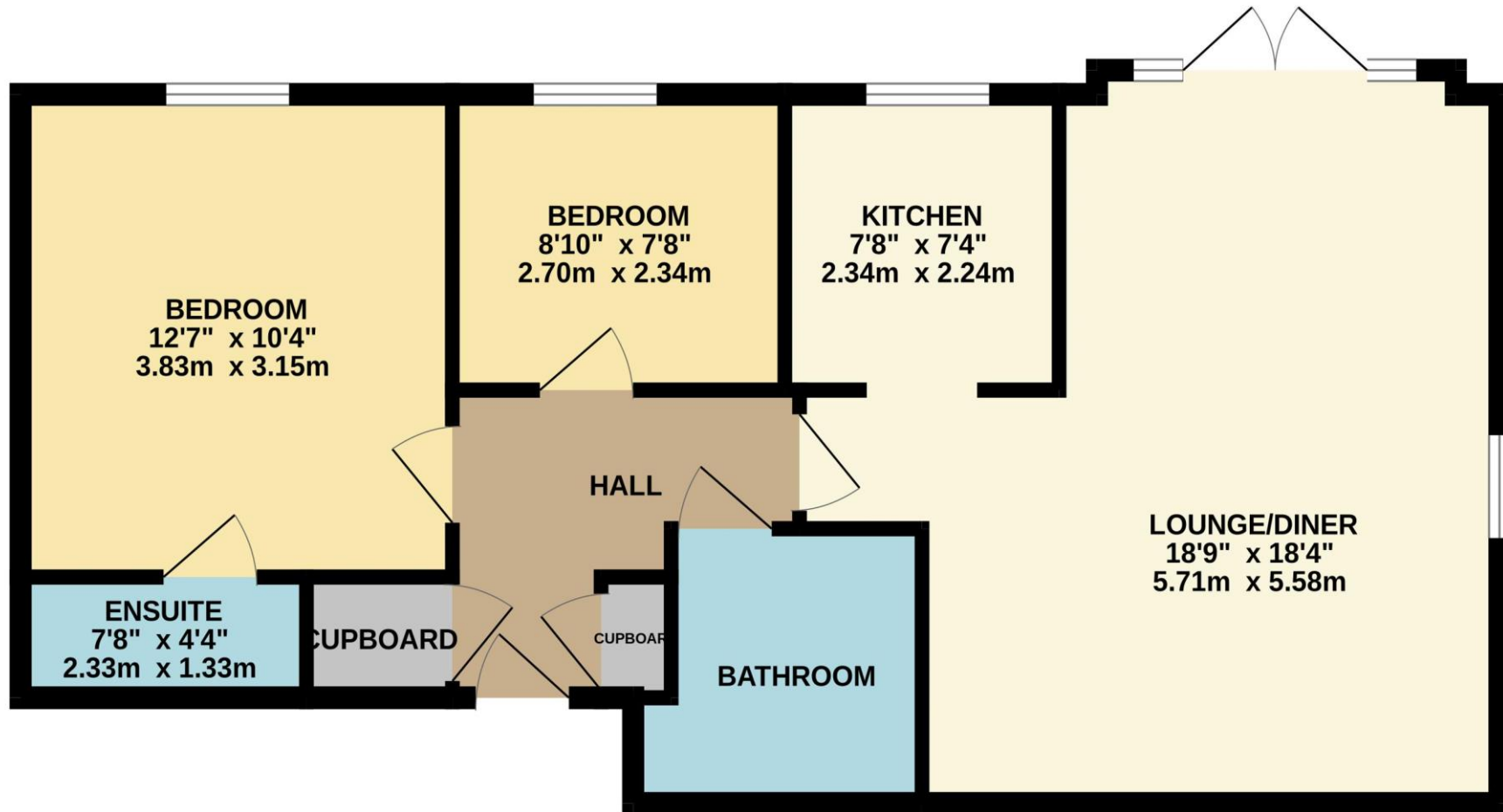
Cheshunts leading estate agent.
Please get in touch for your free
property valuation.







GROUND FLOOR
687 sq.ft. (63.8 sq.m.) approx.



TOTAL FLOOR AREA : 687 sq.ft. (63.8 sq.m.) approx.

Whilst every attempt has been made to ensure the accuracy of the floorplan contained here, measurements of doors, windows, rooms and any other items are approximate and no responsibility is taken for any error, omission or mis-statement. This plan is for illustrative purposes only and should be used as such by any prospective purchaser. The services, systems and appliances shown have not been tested and no guarantee as to their operability or efficiency can be given.

Made with Metropix ©2025

