



Hornchurch Road, Hornchurch, RM11 1QH

**£2,333.33 per month**  
**Equal to £28,000 per annum**

#### Description

The property offers an extensive square footage approaching 1500 and would be suitable for a variety of different uses. In addition, rear parking is available for up to 6 cars.

Offered with vacant possession.

#### Location

The property fronts Hornchurch Road a busy road connecting Hornchurch and Romford.

#### Accommodation

The property offers a total floor area of 1461 sq ft

#### Rateable Value

From information obtained from the Valuation Office Agency website the demise is rated as follows:

Address: 142 Hornchurch Road, Hornchurch, Essex, RM11 1QH

Description: Shop and premises

Rateable Value: £18,500 (April 2026)

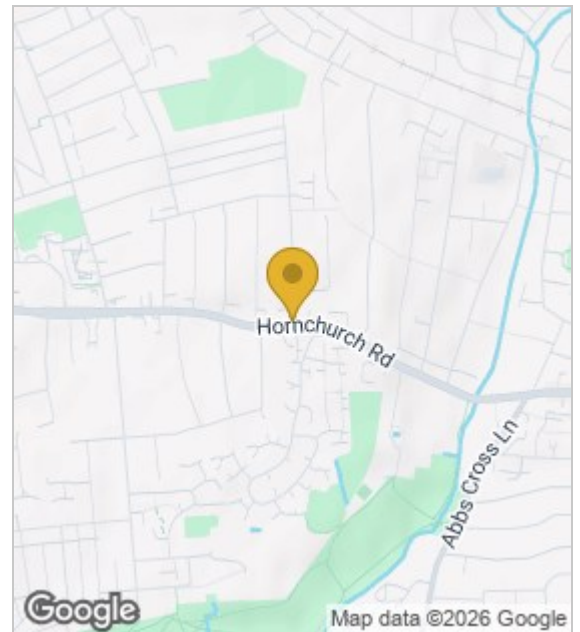
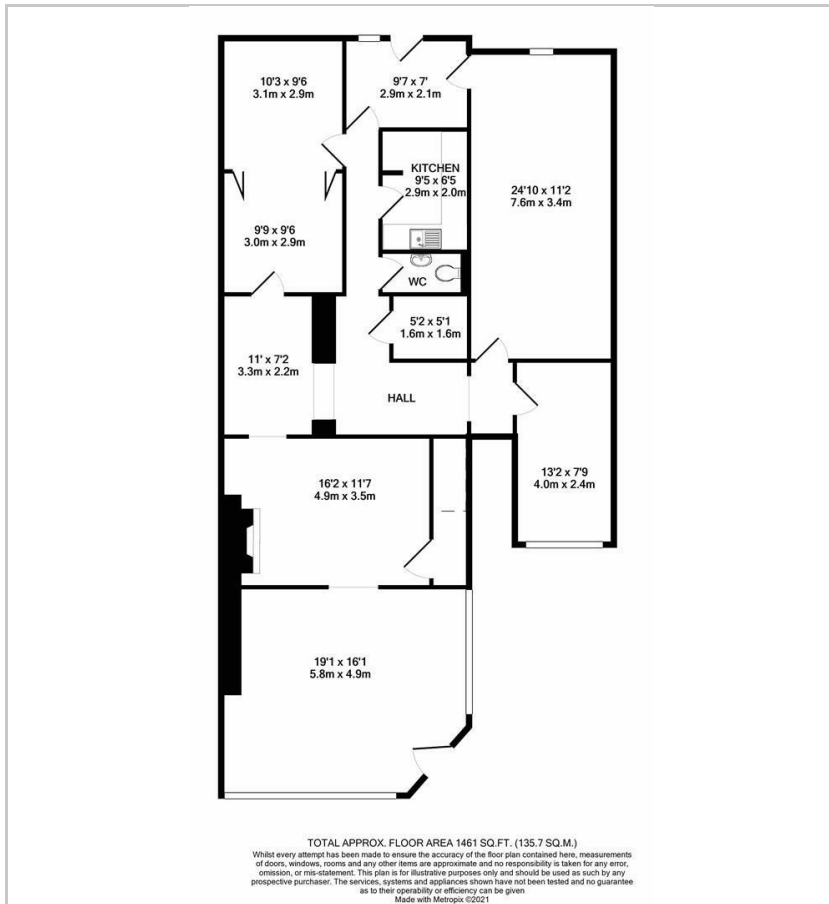
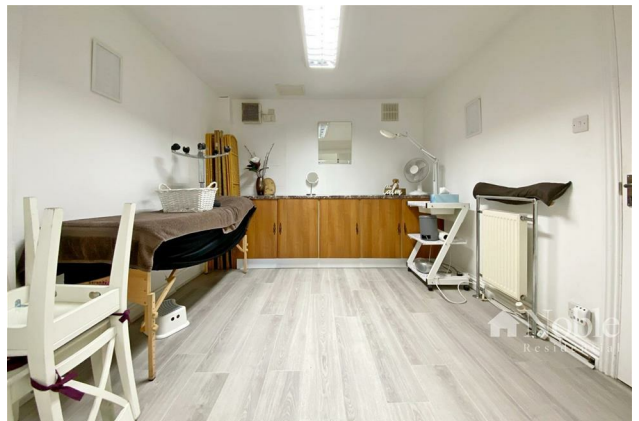
We would advise interested parties to carry out their own checks.

#### Lease Terms

The property is available on a new lease on terms to be agreed. Available now.

#### Rent

£28,000 per annum. VAT status tbc.



These particulars, whilst believed to be accurate are set out as a general outline only for guidance and do not constitute any part of an offer or contract. Interested parties should not rely on them as statements of representation of fact, but must satisfy themselves by inspection or otherwise as to their accuracy. No person in this firm's employment has the authority to make or give any representation or warranty in respect of the property.