



32 Frogmore Road, Southsea

Offers in Region of £220,000

 chinneckshaw



32 Frogmore Road

Southsea

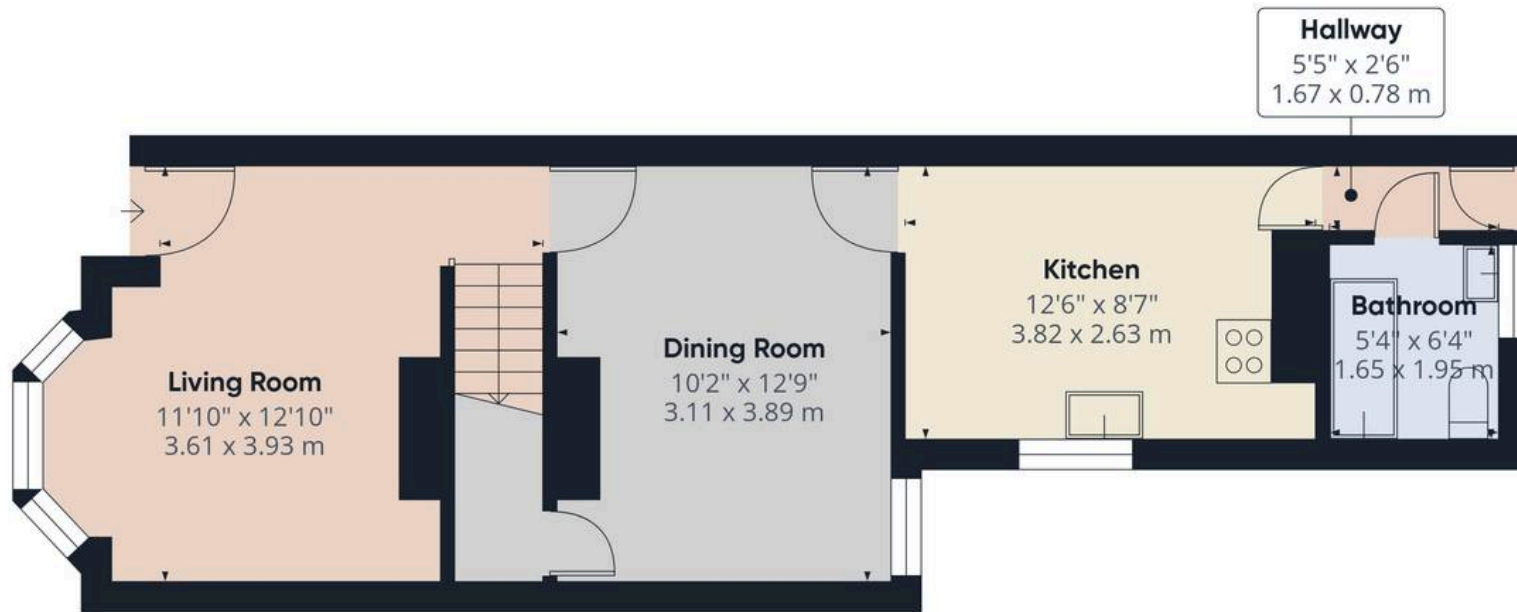
Step inside this inviting two-bedroom terraced home, beautifully presented and offered with no onward chain—ideal for first-time buyers or investors seeking a ready-to-move-into opportunity. The living area is tastefully decorated, creating a comfortable space to relax, while the modern kitchen features sleek cabinetry and contemporary fittings, perfect for everyday living or entertaining.

Upstairs, two well-proportioned bedrooms are filled with natural light and offer flexible use, whether as restful sleeping space, a guest room, or a home office. The bathroom is stylish and modern, finished with clean lines and practical fittings.

The layout is easy to maintain, allowing you to settle in with ease. Conveniently located with excellent access to road and rail links, as well as local amenities, this home offers both comfort and practicality in a well-connected setting.

Material Information • Tenure: Freehold • Council Tax: Band B • Electricity: Mains Supply • Heating: Gas • Water Supply: Mains Supply • Sewage: Mains Supply • Broadband: Standard, Superfast and Ultrafast Fibre are all available in this area • Parking: On Street • Mobile: Ofcom official website checker states that EE, Vodafone, O2 and Three available in the area • Flood Risk: Low Risk





Ground Floor



Floor 1



Approximate total area⁽¹⁾

723 ft²

67.3 m²

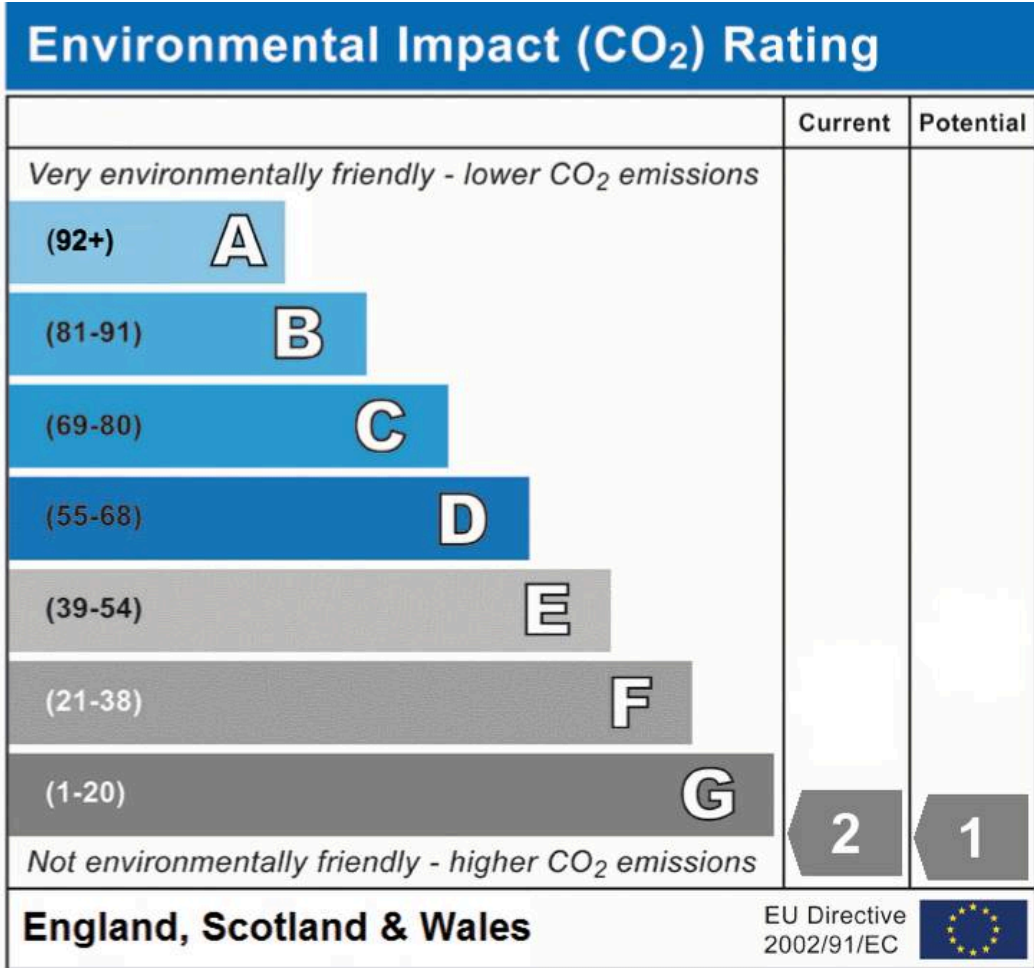
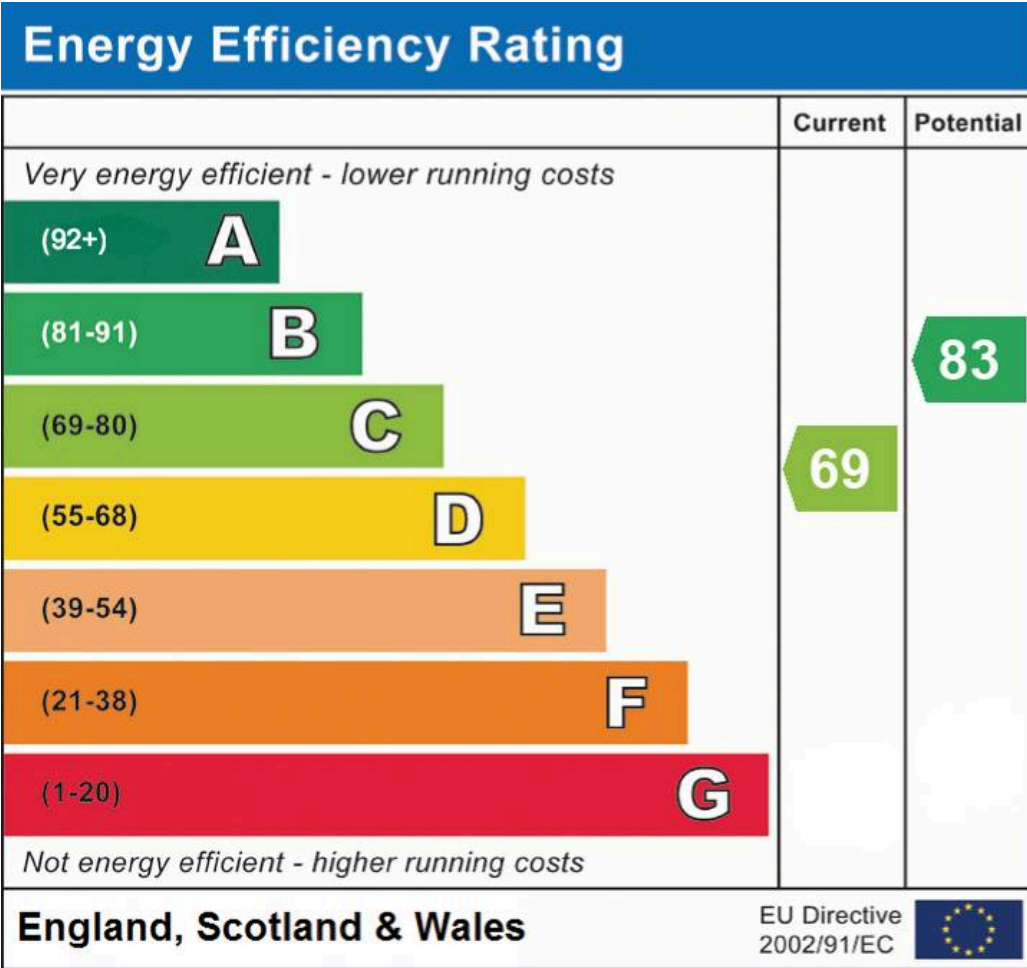
(1) Excluding balconies and terraces

Reduced headroom

----- Below 5 ft/1.5 m

Calculations reference the RICS IPMS 3C standard. Measurements are approximate and not to scale. This floor plan is intended for illustration only.

GIRAFFE360



Chinneck Shaw

Bridge House, Milton Road, Portsmouth – PO3 6AN

023 9282 6731

hello@chinneckshaw.co.uk

www.chinneckshaw.co.uk/

Chinneck Shaw, Bridge House, Milton Road, PO3 6AN Consumer Protection from Unfair Trading Regulations 2008: These details are for guidance only and complete accuracy cannot be guaranteed. If there is any point which is of particular importance, verification should be obtained. They do not constitute a contract or part of a contract. All measurements are approximate. No guarantee can be given with regard to planning permissions or fitness for purpose. No apparatus, equipment, fixture or fitting has been tested. Items shown in the photographs are NOT necessarily included. Interested Parties are advised to check availability and make an appointment to view before travelling to see a property.