

CHURCHWAY, NW1 1LT

Available 4th September

£1,900pm

LONDON NW1

CHESTERTONS

CHURCHWAY

This fantastic property boasts a large double bedroom, spacious reception, kitchen with integrated appliances, family bathroom and good storage.

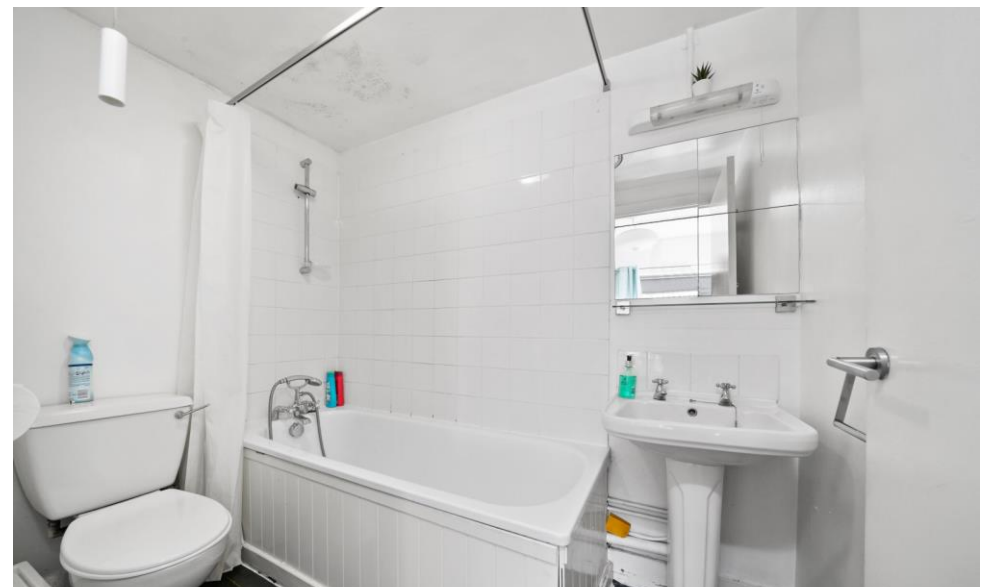




Specifications

- Own Entrance
- Wood effect flooring
- Moments from Euston
- An abundance of natural light







Estates
LONDON
TO LET

CHALTON
STREET NW1

1111
HOUSE
63

63

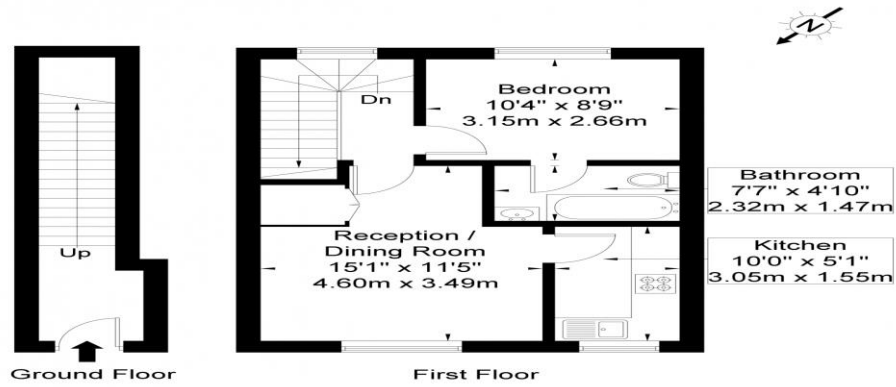
61

65

CHURCHWAY
NW1

Churchway, NW1 1LT

Approx. Gross Internal Area = 46.2 sq m / 497 sq ft



Ref

Copyright

B L E U
P L A N

Price: | EPC: E

Churchway, NW1

Approximate gross Internal area
46.2 sq m / £3.82/Sq.Ft. p/m

This plan is for layout guidance only. Not drawn to scale unless stated. Windows and door openings approximate. Whilst every care is taken in the preparation of this plan, please check all dimensions, shapes and compass bearings before making decisions reliant upon them.

Location

{Please type the description manually}

Chestertons Camden & Primrose Hill
99-101 Parkway
London, NW1

02072673574
camdentownlettingsusers@chestertons.
chestertons.co.uk

Chesterton Global Ltd trading as Chestertons for themselves and for the vendor of this property whose agents they are, give notice that (i) these particulars do not constitute any part of an offer or contract, (ii) all statements contained within these particulars are made without responsibility on the part of Chestertons or the vendor, (iii) whilst made in good faith, none of the statements contained within these particulars are to be relied upon as a statement or representation of fact, (iv) any intending purchasers must satisfy themselves by inspection or otherwise as to the correctness of each of the statements contained within these particulars, (v) the vendor does not make or give either Chestertons or any person in their employment any authority to make or give representation or warranty whatsoever in relation to this property. Wide angle lenses may be used. ©Copyright Chestertons | Chesterton Global Ltd | Registered Office 40 Connaught Street, Hyde Park, London W2 2AB Registered Company Number 05334580.

