



Multi Way, W3

£325,000

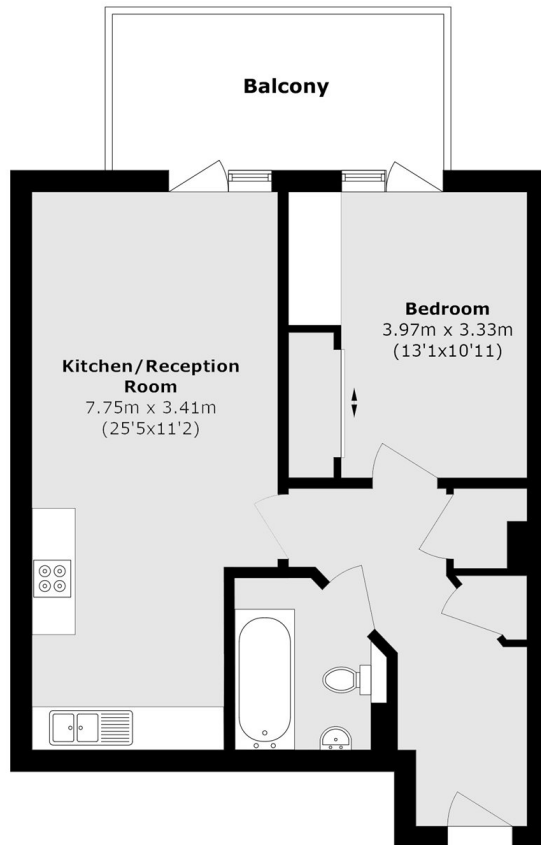
A large modern one bedroom apartment in the popular Factory Quarter development. The property benefits from an open plan reception, a large balcony, plenty of storage and high ceilings.

Watt Court is a popular residential location close to the popular Wendell Park area and the restaurants, delis and cafes of the vibrant Askew Road. Acton Park is also nearby with great local amenities and transport from Acton Central, Turnham Green, or Stamford Brook tube. The property is sold chain free.

Features

- Balcony
- Lift Service
- Chiswick borders
- High Ceilings
- Storage
- EPC B

Multi Way, London, W3



Total area (approx.): 54.9 sq. m (591.0 sq. ft)

Balcony area (approx.): 9.98 sq. m (107.4 sq. ft)