



## Penfold Street, NW8

£800,000

Set within an attractive white Art Deco building, this spacious split-level apartment offers two double bedrooms and excellent natural light throughout. The property features an open plan kitchen/dining room, a separate reception room, and a principal bedroom with en-suite.

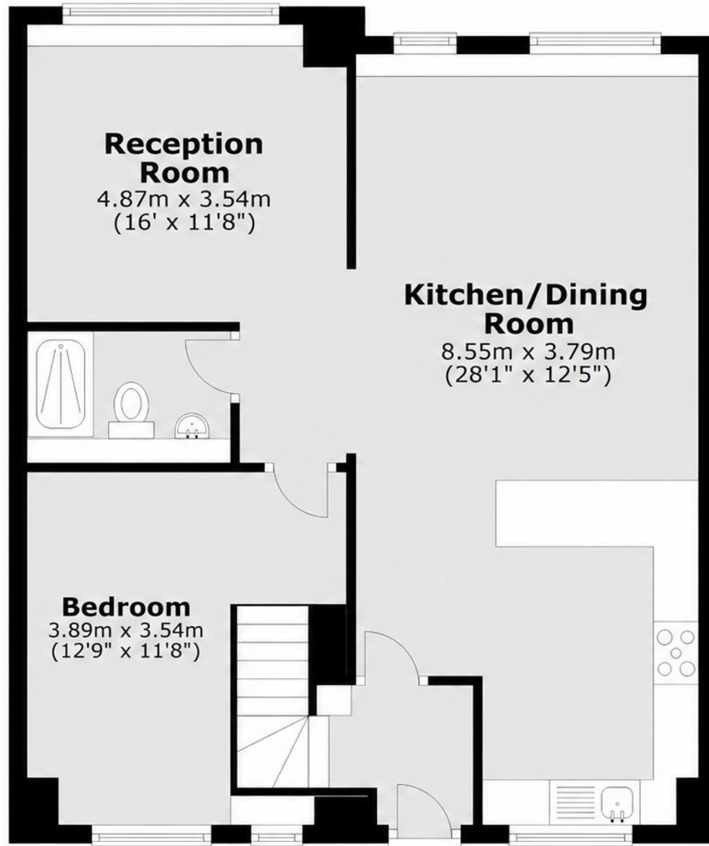
Ideally positioned between Marylebone and Little Venice, the property is close to local cafés, restaurants, and everyday amenities. Hyde Park, Oxford Street, and Regent's Park are all within easy reach. Transport links include Warwick Avenue underground station (Bakerloo line) and Marylebone underground station (Bakerloo line) with National Rail services.

### Features

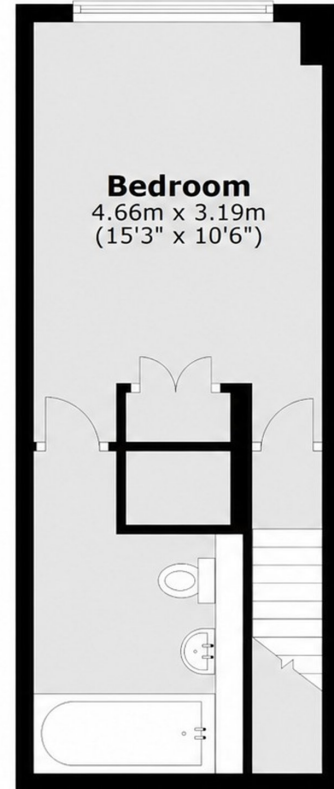
- Two Double Bedroom
- Split Level Apartment
- Two Bathrooms
- Underground Parking
- Storage Room
- Modern Development

Penfold Street,  
London, NW8

**First Floor**



**Raised Ground Floor**



Total area: approx. 91.4 sq. metres (983.7 sq. feet)