



Bryanston Mews West, W1H

£6,045 Per calendar month

A spacious three double bedroom mews house with a private roof terrace, patio garden and garage.

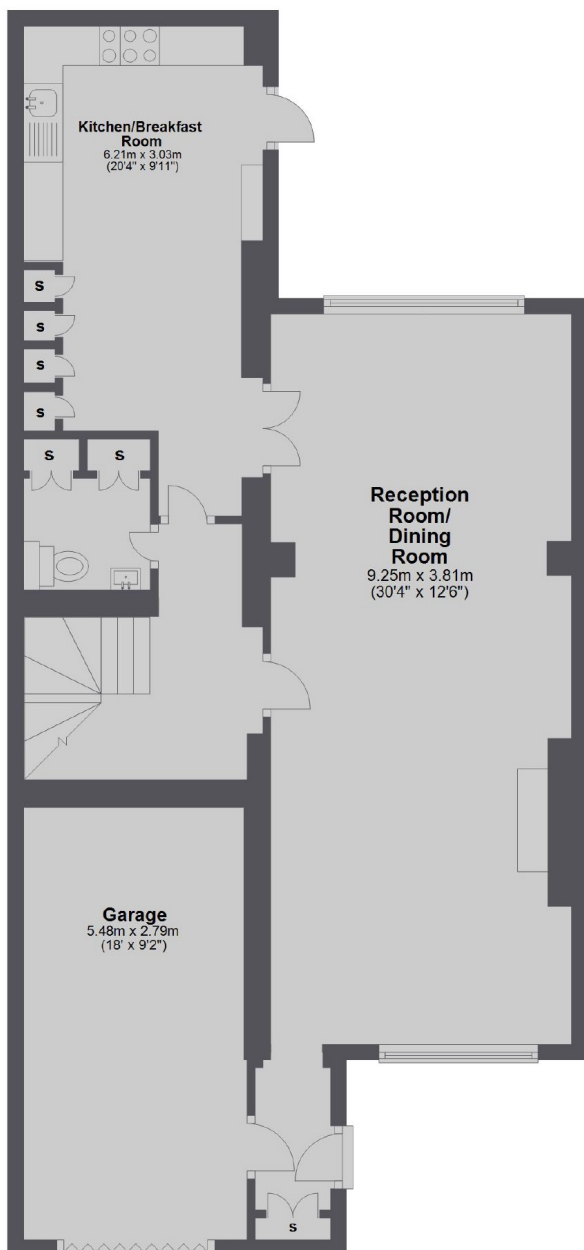
Bryanston Mews West is within walking distance of transport links accessible from Marble Arch, Paddington, Marylebone and Baker Street Stations.

Features

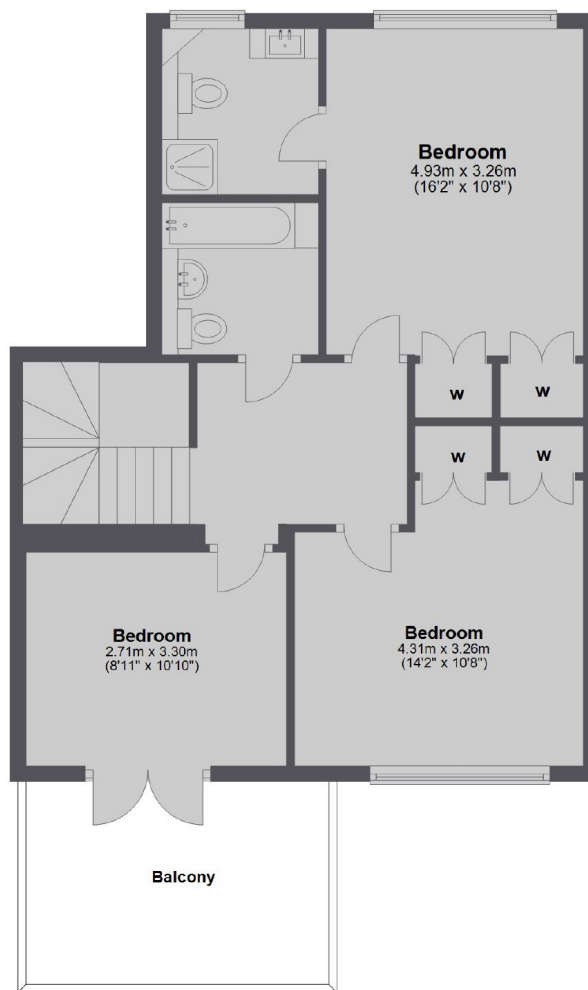
- Mew House
- Three Double Bedrooms
- Private Roof Terrace
- Garage
- Modern Kitchen
- 30ft Reception

Bryanston Mews West, London, W1H

Ground Floor



First Floor



Total area: approx. 143.6 sq. metres (1545.9 sq. feet)