

clever



**ATTENTION
ALL
STUDENTS!**

CASHBACK PROMO £££

**OCEAN HOUSE, KINTERBURY ST
6/7/8 BED ENSUITE APARTMENTS**

£250 CASHBACK!

**PLANNING AHEAD? BOOK OCEAN
HOUSE FOR 2026-2027 AND GET**



8 Beds 10 Kinterbury Street

, Plymouth, PL1 2DG

£144 Per week

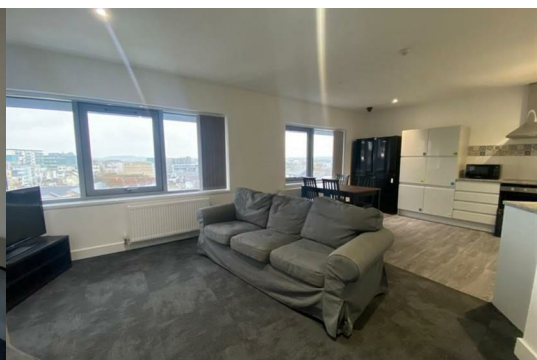
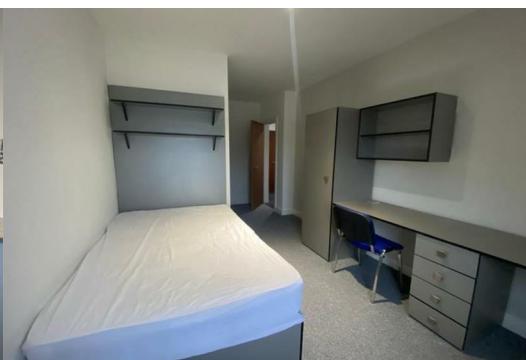


Welcome to this exceptional eight-bedroom apartment located at 10 Kinterbury Street, Plymouth. This property has been meticulously refurbished to a high standard, offering a fresh and contemporary atmosphere that is sure to impress. Each of the eight bedrooms is thoughtfully designed and features its own ensuite bathroom, providing both privacy and convenience for all residents.

Nestled in a vibrant area of Plymouth, this apartment is ideally suited for students, with easy access to local amenities, public transport, and the university. The lively surroundings ensure that residents can enjoy a dynamic lifestyle, with shops, cafes, and recreational facilities just a stone's throw away.

This property will be available for occupancy from the 1st of September 2026, making it an excellent choice for those looking to secure their accommodation for the upcoming academic year. Whether you are a group of friends seeking a comfortable living space or an investor looking for a prime rental opportunity, this apartment offers a unique blend of modern living and practicality.

Do not miss the chance to make this remarkable apartment your new home in Plymouth.



Area Map



Floor Plans



Energy Efficiency Graph

These particulars, whilst believed to be accurate are set out as a general outline only for guidance and do not constitute any part of an offer or contract. Intending purchasers should not rely on them as statements of representation of fact, but must satisfy themselves by inspection or otherwise as to their accuracy. No person in this firms employment has the authority to make or give any representation or warranty in respect of the property.