



**Guide Price**  
**£325,000**

**Freehold**

3x  1x  1x 

**Pin Mill, Barstable,  
Basildon, Essex, SS14**

**OVER 60?**

Secure this property  
for up to **59% less!**

 **DOUGLAS  
ALLEN**  
Helping you move forwards





## Main features

- Close to transport links and town centre
- Walking distance to station
- In catchment area to local desirable schools
- Open plan kitchen/diner
- 3 generous sized bedrooms and a family bathroom

## Accommodation

### GROUND FLOOR

Entrance Hallway  
Lounge: 15'4 x 11'8 (4.68m x 3.56m)  
Kitchen/Diner: 22'4 x 8'3 (6.81m x 2.52m)

### FIRST FLOOR

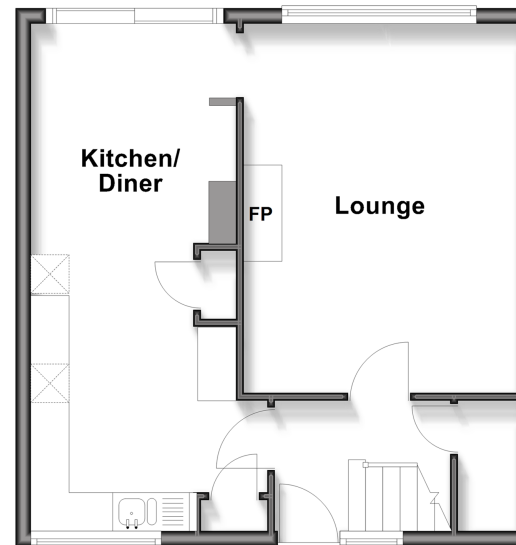
Landing  
Bedroom 1: 13'0 x 8'9 (3.97m x 2.67m)  
Bedroom 2: 12'3 x 11'6 (3.74m x 3.51m)  
Bedroom 3: 9'5 x 7'3 (2.87m x 2.21m)  
Bathroom

### OUTSIDE

Front Garden  
Rear Garden

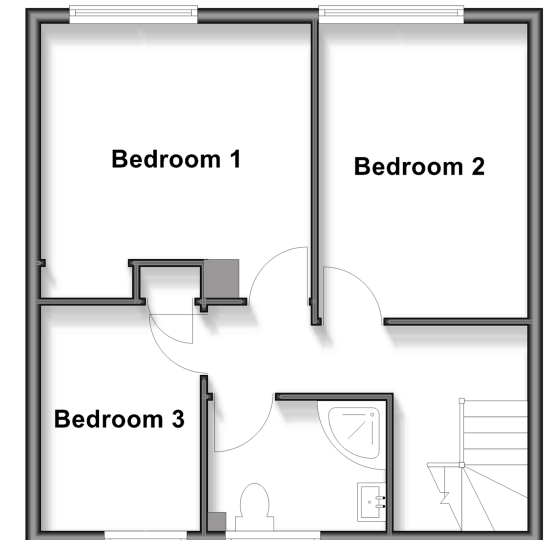
### Ground Floor

Approx. 41.9 sq. metres (451.3 sq. feet)



### First Floor

Approx. 41.9 sq. metres (451.3 sq. feet)



**Call Basildon - 01268 293993 ■ [douglasallen.co.uk](http://douglasallen.co.uk)**

- A private rental licensing scheme applies to some properties in this area, please contact us before proceeding
- Appliances & services are untested, dimensions are approximate and floor plans are not to scale

- Legal advice should be taken to verify fixtures/fittings, planning, alterations and/or lease details
- Through a Homewise Home For Life Plan people aged 60+ can secure this property for up to 50% less, by purchasing a Lifetime Lease.