



Clifford Gardens, NW10

£2,650 Per Month

AVAILABLE TO LET is this well presented two bedroom Garden Flat, situated on a pretty tree-lined street in Kensal Rise.

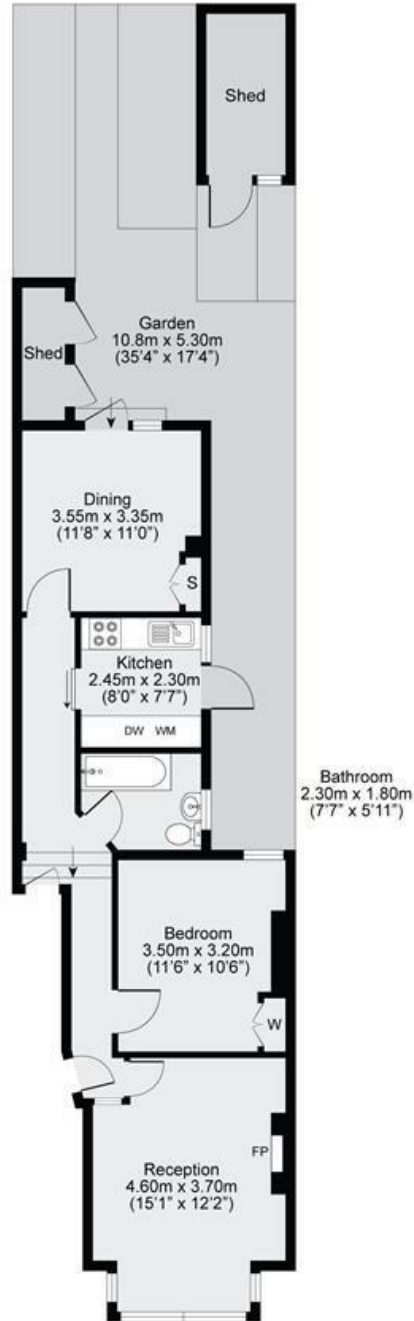
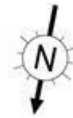
- Bright 2 bedroom, 1 bathroom Garden Flat
- Separate fitted kitchen with appliances
- Spacious reception room and dining room
- Private garden with shed
- Close to local amenities on Chamberlayne Road
- Transport links: (Kensal Rise - Mildmay- Zone 2)
- COUNCIL: Brent (D)
- DEPOSIT: £3,057
- Viewing is highly recommended



020 8450 9377 - 020 8459 1133
rentals@cameronsstiff.co.uk

Clifford Gardens, NW10

Approx. Gross Internal Area = 60.0sqm / 645.8sqft



Ground Floor

Disclaimer: Floorplan measurements are approximate and are for illustrative purposes only. While we do not doubt the floorplan accuracy and completeness, you or your advisors should conduct a careful, independent investigation of the property in respect of monetary valuation.

EPC: C

Ref: 19614895

