

Ormesby, Waveney Road, King's Lynn, PE30 4XB

£1,100 Per Month

Council Tax Band: A

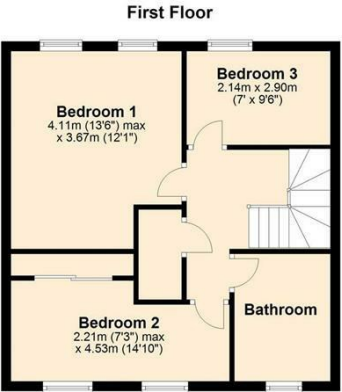
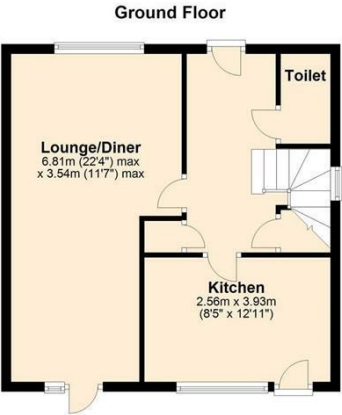




Open House King's Lynn are delighted to offer this THREE BEDROOM terraced house situated close proximity to Queen Elizabeth Hospital . The accommodation is arranged over two floors comprising Entrance Hall, Downstairs Cloakroom, Lounge/Diner, Kitchen, Three Bedrooms, Family Bathroom, Garage and front and rear Gardens.



Open House King's Lynn



All Sizes Are Approximates Only  
Plan produced using PlanUp.



Energy Efficiency Rating		
	Current	Potential
Very energy efficient - lower running costs		
(92 plus) A		
(81-91) B		87
(69-80) C	73	
(55-68) D		
(39-54) E		
(21-38) F		
(1-20) G		
Not energy efficient - higher running costs		
England & Wales	EU Directive 2002/91/EC	