



282, Hertingfordbury Road, Hertingfordbury  
SG14 2LG

Guide Price £2,000,000



[stevenoates.com](https://www.stevenoates.com)





## The Tulip, 282 Hertingfordbury Road, Hertingfordbury, Herts, SG14 2LG

An exquisite brand new detached family home located within the heart of the highly sought after village of Hertingfordbury. The stylish accommodation which extends to over 5000 sqft is designed with flexibility in mind and including 4 large bedrooms on the first floor, including 3 bathrooms, whilst on the ground the vast accommodation comprises of 4 principal reception rooms, a large living room/guest bedroom which has a bathroom adjoining. In addition, there is a large entrance hall and a huge family kitchen across the back of the house. Outside, the property benefits from driveway parking and extensive rear gardens.

Occupying an enviable position in the heart of this highly sought after village on the western outskirts of Hertford, the property is only a short distance (1.1 miles) from Hertford North mainline station which serves London's Moorgate and Hertford town centre is less than 2.0 miles away. The village of Hertingfordbury benefits from an active community with facilities including a cricket green, tennis courts and a highly acclaimed newly refurbished village pub, The White Horse.



70 Fore Street, Hertford, Hertfordshire, SG14 1BY



70 Fore Street, Hertford, Hertfordshire, SG14 1BY





70 Fore Street, Hertford, Hertfordshire, SG14 1BY



70 Fore Street, Hertford, Hertfordshire, SG14 1BY



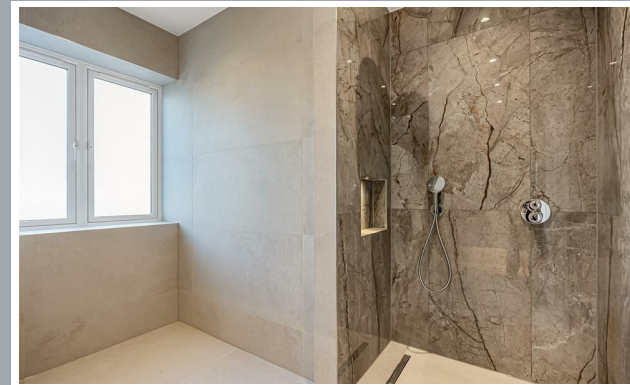
70 Fore Street, Hertford, Hertfordshire, SG14 1BY





70 Fore Street, Hertford, Hertfordshire, SG14 1BY





70 Fore Street, Hertford, Hertfordshire, SG14 1BY



70 Fore Street, Hertford, Hertfordshire, SG14 1BY



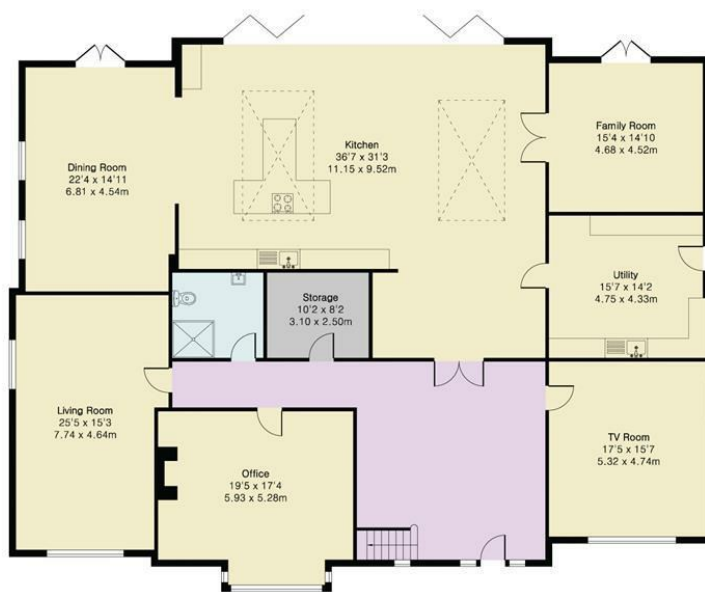


70 Fore Street, Hertford, Hertfordshire, SG14 1BY

**Approximate Gross Internal Area 5265 sq ft - 490 sq m**

Ground Floor Area 3408 sq ft – 317 sq m

First Floor Area 1857 sq ft – 173 sq m



Ground Floor



First Floor

These particulars, whilst believed to be accurate are set out as a general outline only for guidance and do not constitute any part of an offer or contract. Intending purchasers should not rely on them as statements of representation of fact, but must satisfy themselves by inspection or otherwise as to their accuracy. No person in this firm's employment has the authority to make or give any representation or warranty in respect of the property.



[stevenoates.com](http://stevenoates.com)